

**-LTLNI-**  
 PIs Sta. 25+80.786    PI Sta. 26+73.115    PIs Sta. 27+65.250  
 Gs = 2°56'47.9"    Δ = 8°09'00.4" (RT)    Gs = 2°56'47.9"  
 Ls = 90.000    L = 124.465    Ls = 90.000  
 LT = 60.008    T = 62.338    LT = 60.008  
 ST = 30.008    R = 875.000    ST = 30.008  
 S.E. = 0.05

**-L-**  
 PIs Sta. 25+59.134    PI Sta. 26+51.464    PIs Sta. 27+43.599  
 Gs = 2°56'47.9"    Δ = 8°09'00.4" (RT)    Gs = 2°56'47.9"  
 Ls = 90.000    L = 124.465    Ls = 90.000  
 LT = 60.008    T = 62.338    LT = 60.008  
 ST = 30.008    R = 875.000    ST = 30.008

NOTES: (1) SEE SHEET 27 FOR -LTLNI- & -RTLNI- PROFILES  
 (2) SEE SHEET 28 FOR -L- PROFILE

METRIC

PROJECT REFERENCE NO. R-2568B SHEET NO. 5  
 R/W SHEET NO. 5  
 ROADWAY DESIGN ENGINEER HYDRAULICS ENGINEER

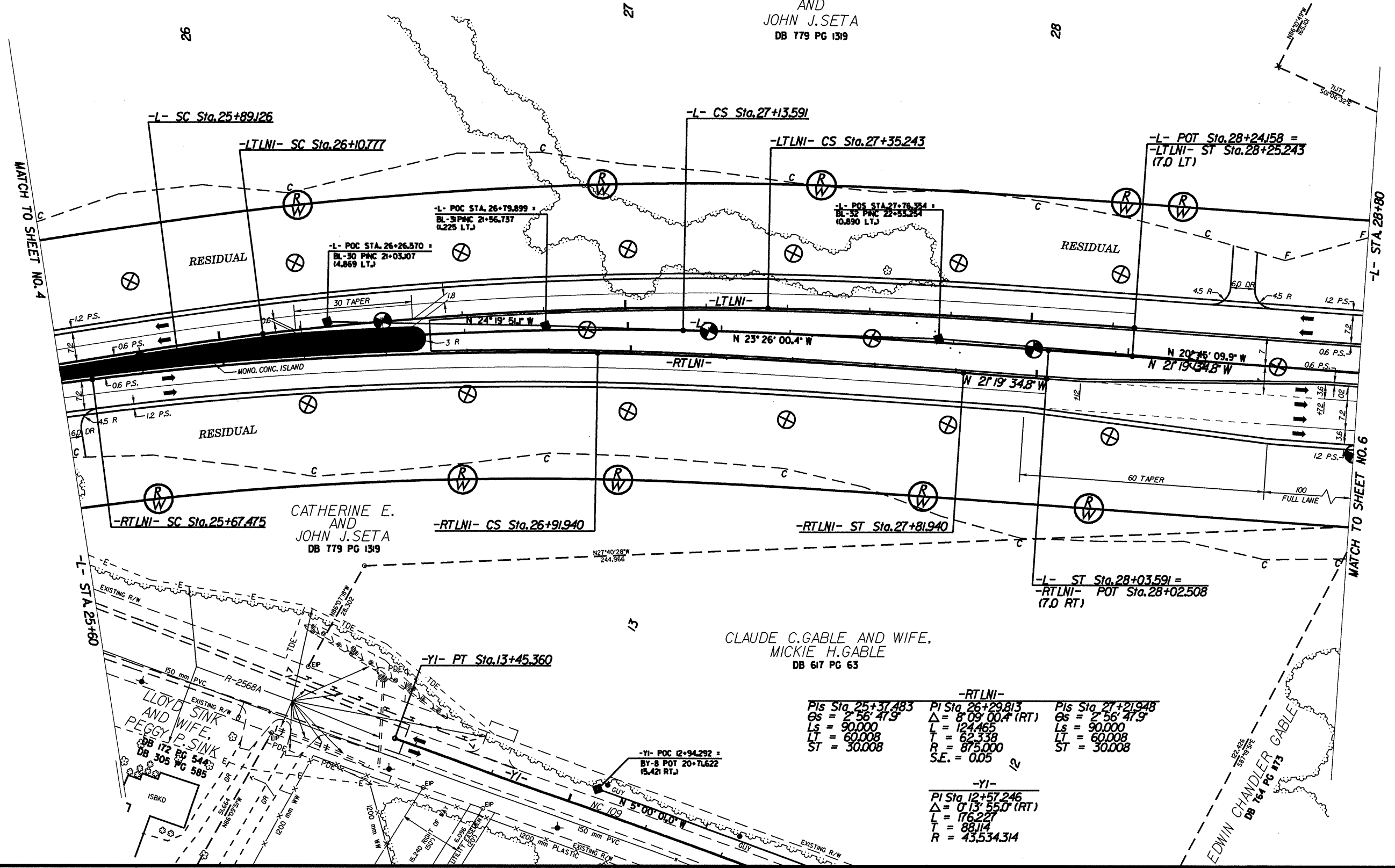
PRELIMINARY PLANS  
 DO NOT USE FOR CONSTRUCTION

INCOMPLETE PLANS  
 DO NOT USE FOR R/W ACQUISITION

CONST. REV. \_\_\_\_\_  
 R/W REV. \_\_\_\_\_

CATHERINE E. AND JOHN J. SETA  
 DB 779 PG 1319

CLAUDE C. GABLE AND WIFE, MICKIE H. GABLE  
 DB 617 PG 63



**-RTLNI-**  
 PIs Sta. 25+37.483    PI Sta. 26+29.813    PIs Sta. 27+21.948  
 Gs = 2°56'47.9"    Δ = 8°09'00.4" (RT)    Gs = 2°56'47.9"  
 Ls = 90.000    L = 124.465    Ls = 90.000  
 LT = 60.008    T = 62.338    LT = 60.008  
 ST = 30.008    R = 875.000    ST = 30.008  
 S.E. = 0.05

**-YI-**  
 PI Sta. 12+57.246  
 Δ = 0°13'55.0" (RT)  
 L = 176.227  
 T = 88.114  
 R = 43,534.314

REVISIONS

MATCH TO SHEET NO. 4

-L- STA. 28+80

MATCH TO SHEET NO. 6

EDWIN CHANDLER GABLE  
 DB 761 PG 113

8/17/08