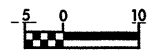


NOTE: SEE SHEET 29 FOR -L- PROFILE

PROJECT REFERENCE NO. R-2568B		SHEET NO. 7	
R/W SHEET NO. 7			
ROADWAY DESIGN ENGINEER		HYDRAULICS ENGINEER	
CONST. REV. _____		PRELIMINARY PLANS DO NOT USE FOR CONSTRUCTION	
R/W REV. _____		PROCOMPLETE PLANS DO NOT USE FOR R/W ACQUISITION	



TERRY L. LABONTE AND WIFE,
KIMBERLY J. LABONTE
DB 925 PG 553

SAMUEL GORDON MYERS
AND DAVID LUTHER MYERS
DB 668 PG 280

DONALD WILBORNE, SR.
AND WIFE,
EDNA R. WILBORNE
DB 639 PG 881

JUANITA S. THOMAS
AND WILMA S. BROWN
DB 993 PG 582
PB 18 PG 5

-L- STA. 32+20

-L- STA. 35+40

MATCH TO SHEET NO. 6

MATCH TO SHEET NO. 8

JUANITA S. THOMAS
AND
WILMA S. BROWN
DB 993 PG 582
PB 18 PG 5

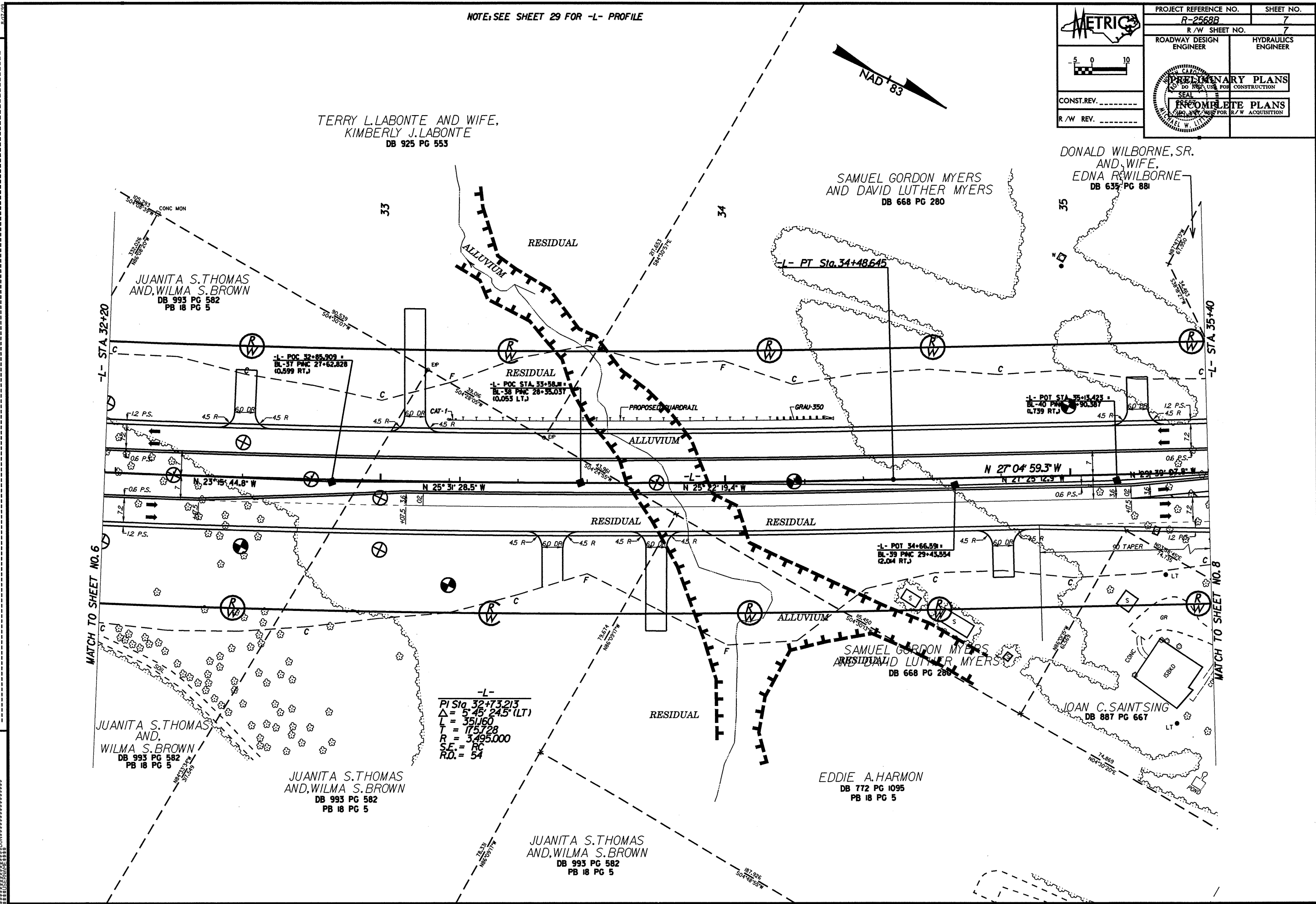
JUANITA S. THOMAS
AND WILMA S. BROWN
DB 993 PG 582
PB 18 PG 5

JUANITA S. THOMAS
AND WILMA S. BROWN
DB 993 PG 582
PB 18 PG 5

EDDIE A. HARMON
DB 772 PG 1095
PB 18 PG 5

JOAN C. SAINTSING
DB 887 PG 667

-L-
PI Sta. 32+73.213
 $\Delta = 5' 45" 245' (LT)$
L = 351.60
T = 175.728
R = 3,495.000
S.E. = RC
R.O. = 54



REVISIONS

*****SYSTEME*****
*****PLANNING*****
*****ENGINEERING*****