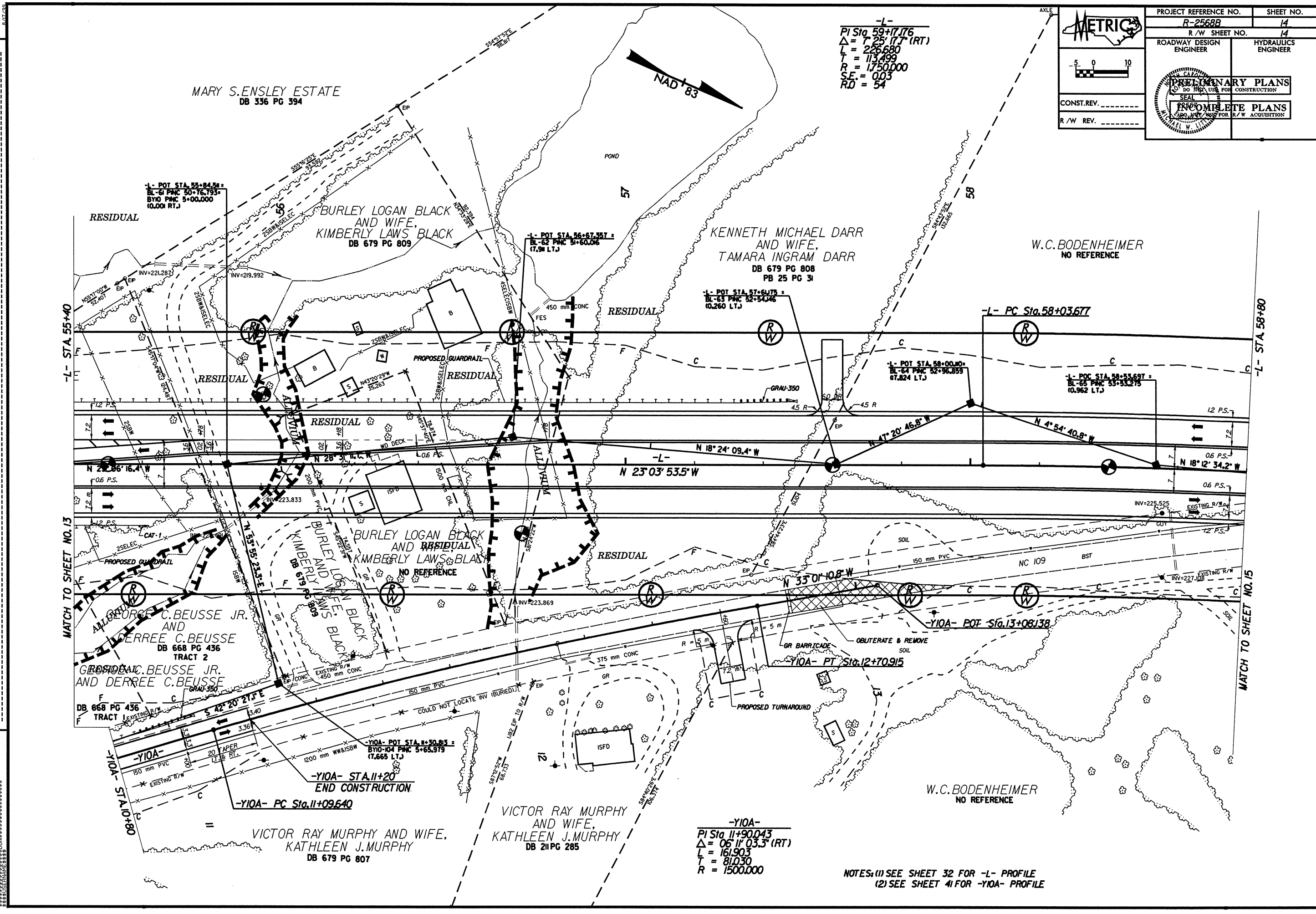


REVISIONS



-L-
 PI Sta 59+17.76
 $\Delta = 7' 25" 17.7 (RT)$
 L = 226.680
 T = 113.499
 R = 1750.000
 SE = 0.03
 RO = 54

METRIC

PROJECT REFERENCE NO. R-2568B SHEET NO. 14
 R/W SHEET NO. 14
 ROADWAY DESIGN ENGINEER HYDRAULICS ENGINEER

PRELIMINARY PLANS
 DO NOT USE FOR CONSTRUCTION

INCOMPLETE PLANS
 NOT TO BE USED FOR R/W ACQUISITION

CONST. REV. _____
 R/W REV. _____

SCALE: 1" = 40'

-Y10A-
 PI Sta 11+90.043
 $\Delta = 06' 11" 03.3 (RT)$
 L = 161.903
 T = 81.030
 R = 1500.000

NOTES: (1) SEE SHEET 32 FOR -L- PROFILE
 (2) SEE SHEET 41 FOR -Y10A- PROFILE

-L- STA 55+40

-L- STA 58+80

MATCH TO SHEET NO. 13

MATCH TO SHEET NO. 15

8/17/98