

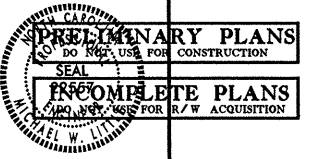


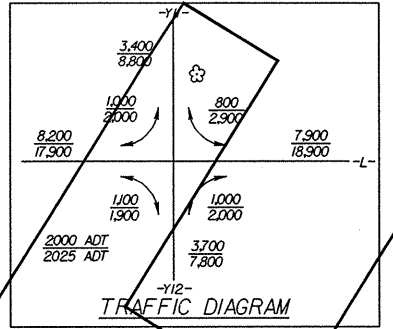
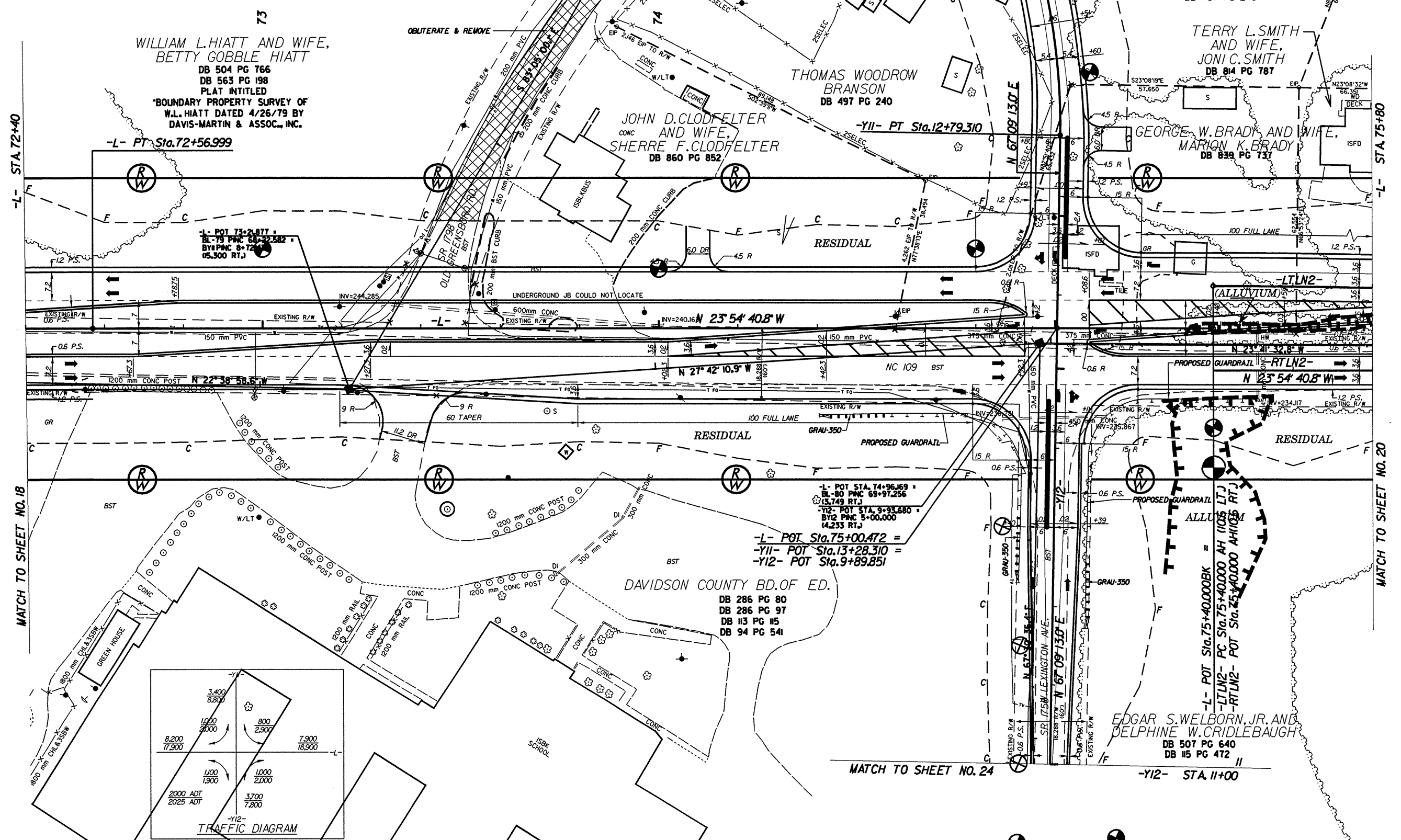
PROJECT REFERENCE NO. R-2568B		SHEET NO. 19	
ROADWAY DESIGN ENGINEER		HYDRAULICS ENGINEER	
			
			
CONST. REV.		R/W REV.	
			

**-L-**  
 PI Sta 71+65.14  
 $\Delta = 6' 01.38''$  (RT)  
 $L = 183.885$   
 $T = 92.027$   
 $R = 1750.000$   
 $S.E. = 0.03$   
 $R.D. = 54$

**-LTLN2-**  
 PI Sta 76+26.904  
 $\Delta = 5' 41' 09.2''$  (RT)  
 $L = 173.666$   
 $T = 86.904$   
 $R = 1750.000$   
 $S.E. = 0.03$   
 $R.D. = 54$

**-Y11-**  
 PI Sta 12+44.647  
 $\Delta = 25' 14' 31.1''$  (RT)  
 $L = 70.489$   
 $T = 35.826$   
 $R = 160.000$   
 $S.E. = 0.06$   
 $R.D. = 42$

NOTES: (1) SEE SHEET 35 FOR -L-, -LTLN2- & -RTLN2- PROFILES  
 (2) SEE SHEET 42 FOR -Y11- & -Y12- PROFILES



REVISIONS

\*\*\*\*\*SYTIME\*\*\*\*\*  
 \*\*\*\*\*DATE\*\*\*\*\*  
 \*\*\*\*\*TIME\*\*\*\*\*