

BM #5 - RR SPIKE IN BASE OF 275 mm PECAN TREE  
 R-25684 -L- 22+95.709, 36.973 m LT.  
 EL. = 219.990

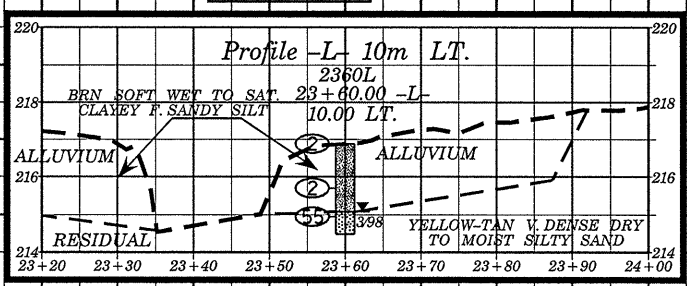
PROJECT REFERENCE NO. R-2568B  
 ROADWAY DESIGN ENGINEER  
 SHEET NO. 26  
 HYDRAULICS ENGINEER

PRELIMINARY PLANS FOR CONSTRUCTION  
 INCOMPLETE PLANS FOR R/W ACQUISITION

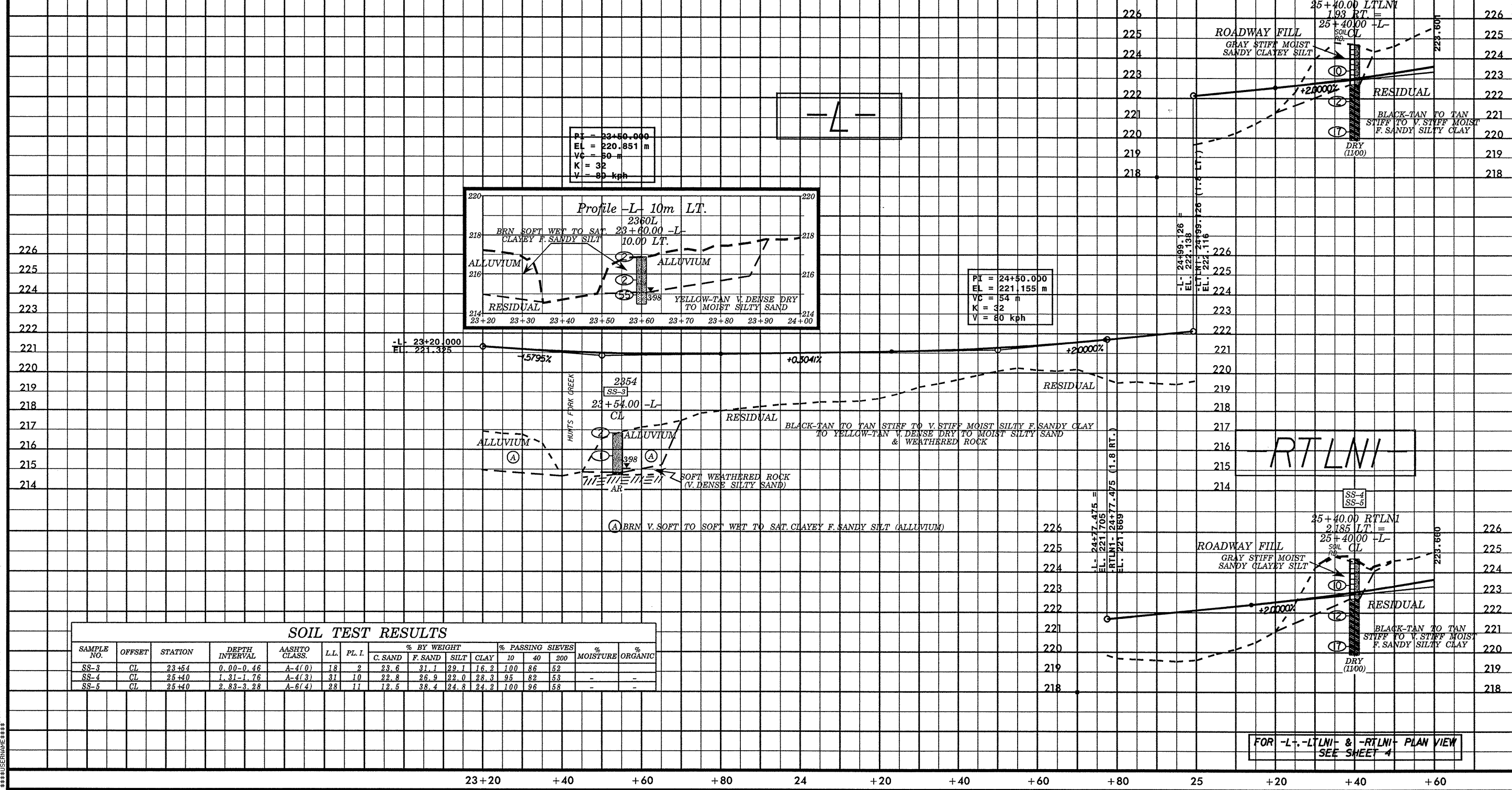
CONST.REV.  
 R/W REV.

-LTLNI-

PI = 23+50.000  
 EL = 220.851 m  
 VC = 50 m  
 K = 32  
 V = 80 kph



PI = 24+50.000  
 EL = 221.155 m  
 VC = 54 m  
 K = 32  
 V = 80 kph



SOIL TEST RESULTS

SAMPLE NO.	OFFSET	STATION	DEPTH INTERVAL	AASHTO CLASS.	LL	PL. I.	% BY WEIGHT				% PASSING SIEVES			% MOISTURE	% ORGANIC
							C. SAND	F. SAND	SILT	CLAY	10	40	200		
SS-3	CL	23+54	0.00-0.46	A-4(0)	18	2	23.6	31.1	29.1	16.2	100	86	52	-	-
SS-4	CL	25+40	1.31-1.76	A-4(3)	31	10	22.8	26.9	22.0	28.3	95	82	53	-	-
SS-5	CL	25+40	2.83-3.28	A-6(4)	28	11	12.5	38.4	24.8	24.2	100	96	58	-	-

FOR -L-, -LTLNI- & -RTLNI- PLAN VIEW  
 SEE SHEET 4

6/10/03  
 \*\*\*\*\*  
 SYSTEMS  
 \*\*\*\*\*