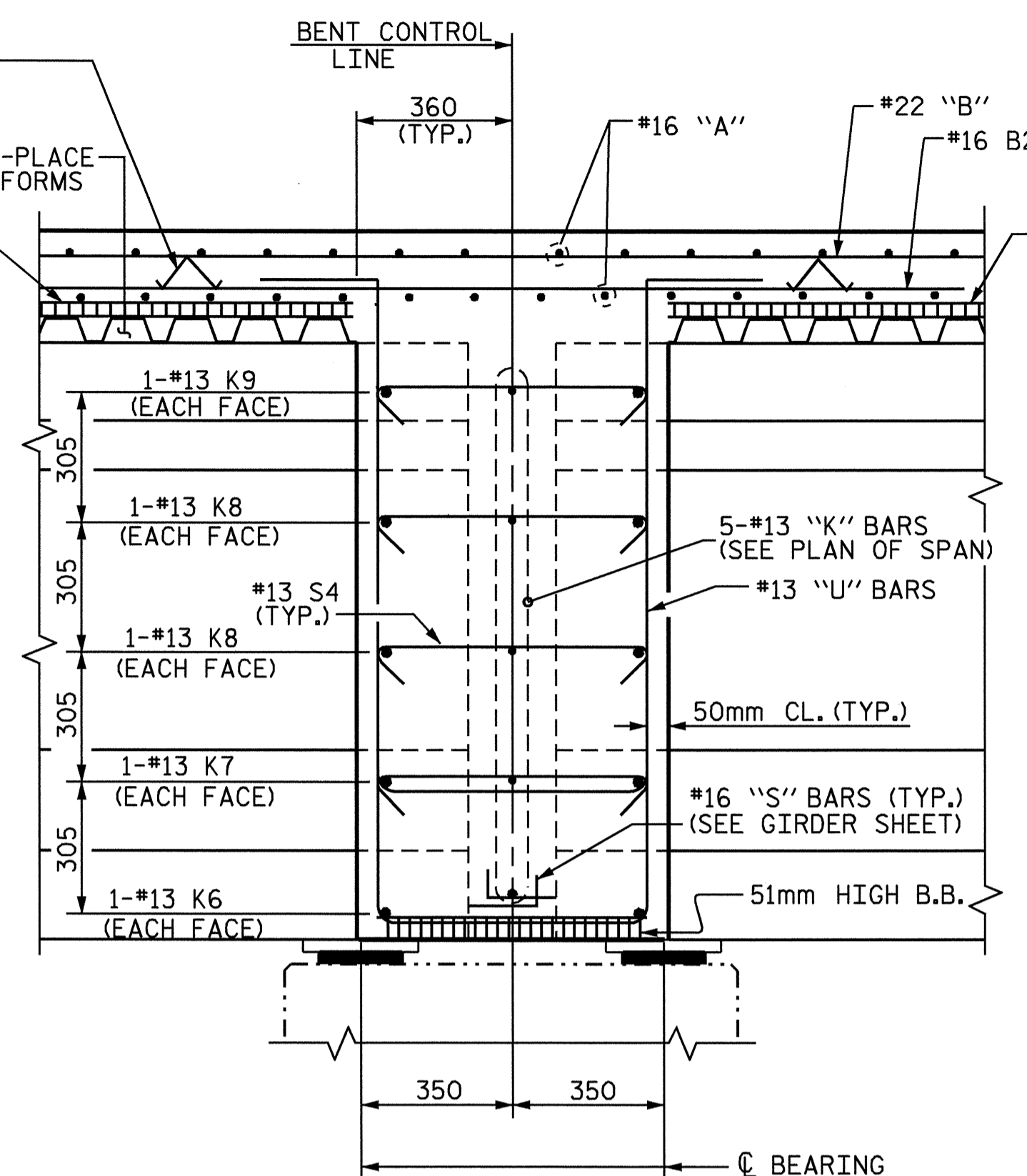
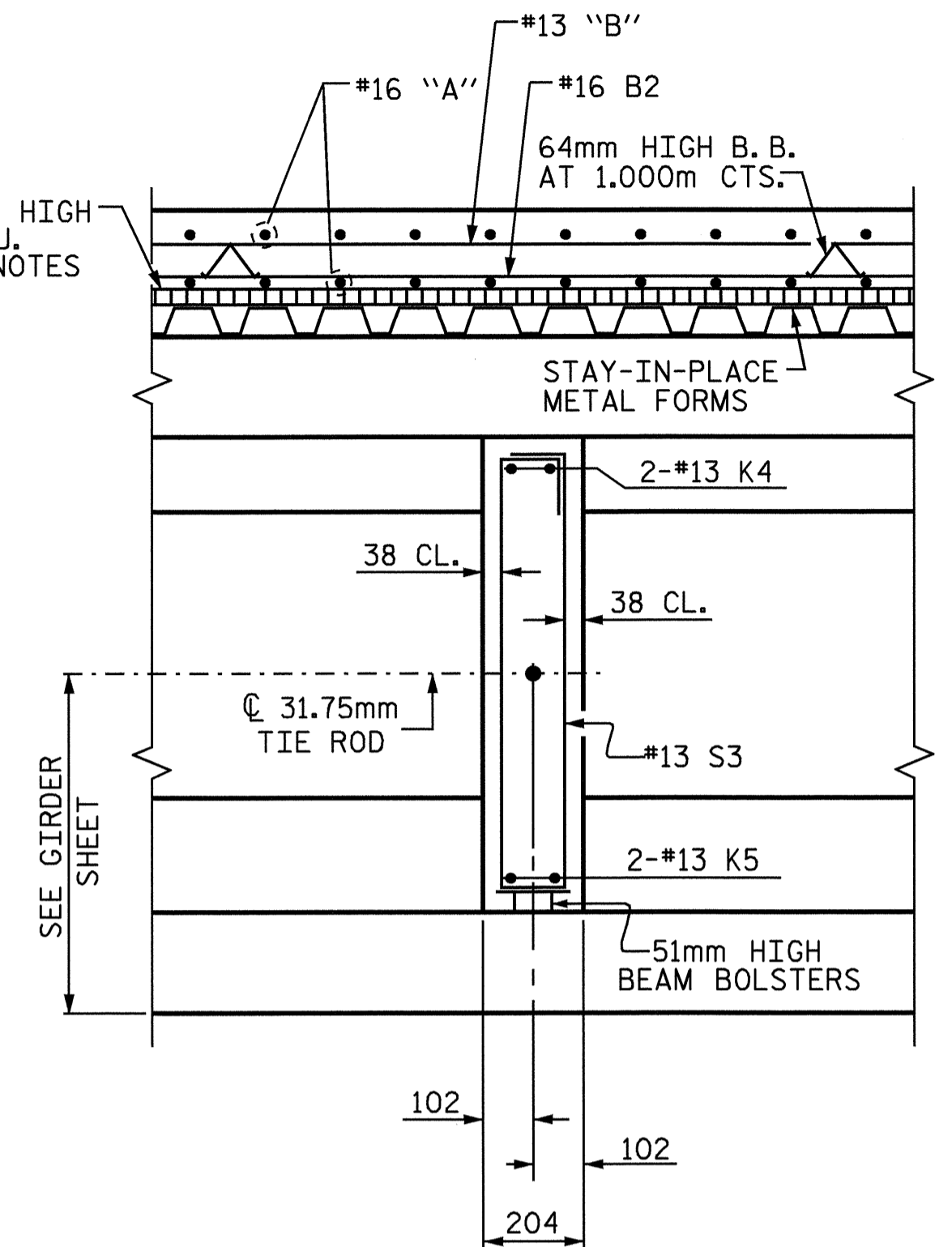


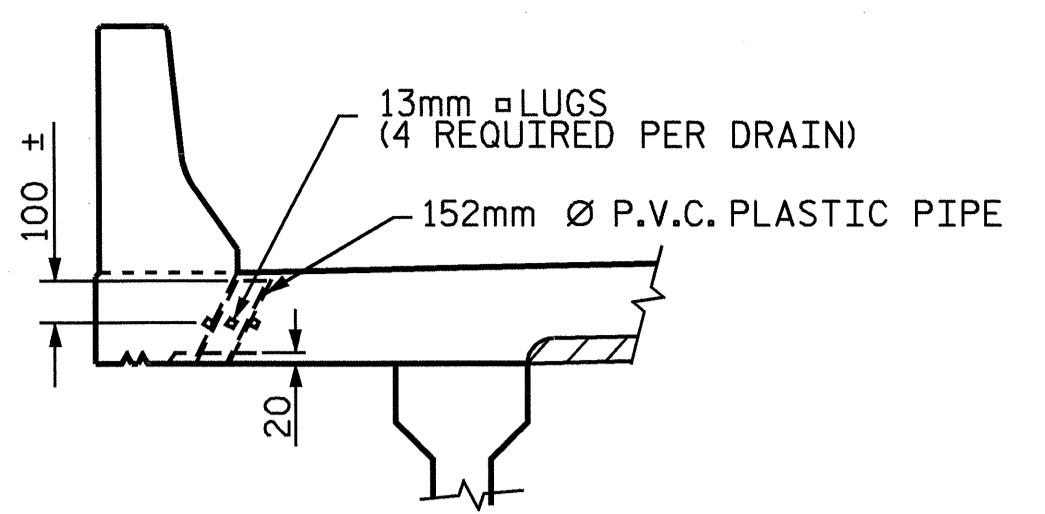
SECTION THRU END BENT DIAPHRAGM



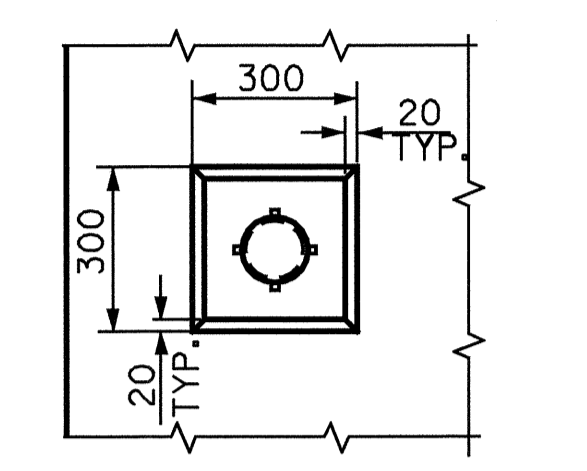
SECTION THRU CONTINUOUS BENT DIAPHRAGM



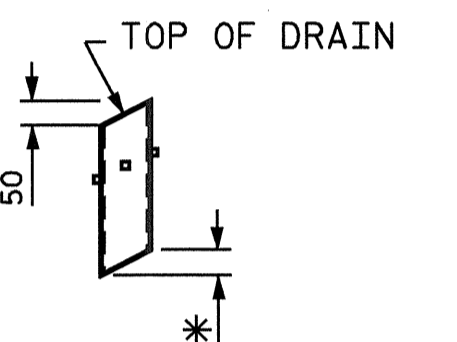
SECTION THRU INTERMEDIATE DIAPHRAGM



ELEVATION



PLAN OF RECESS

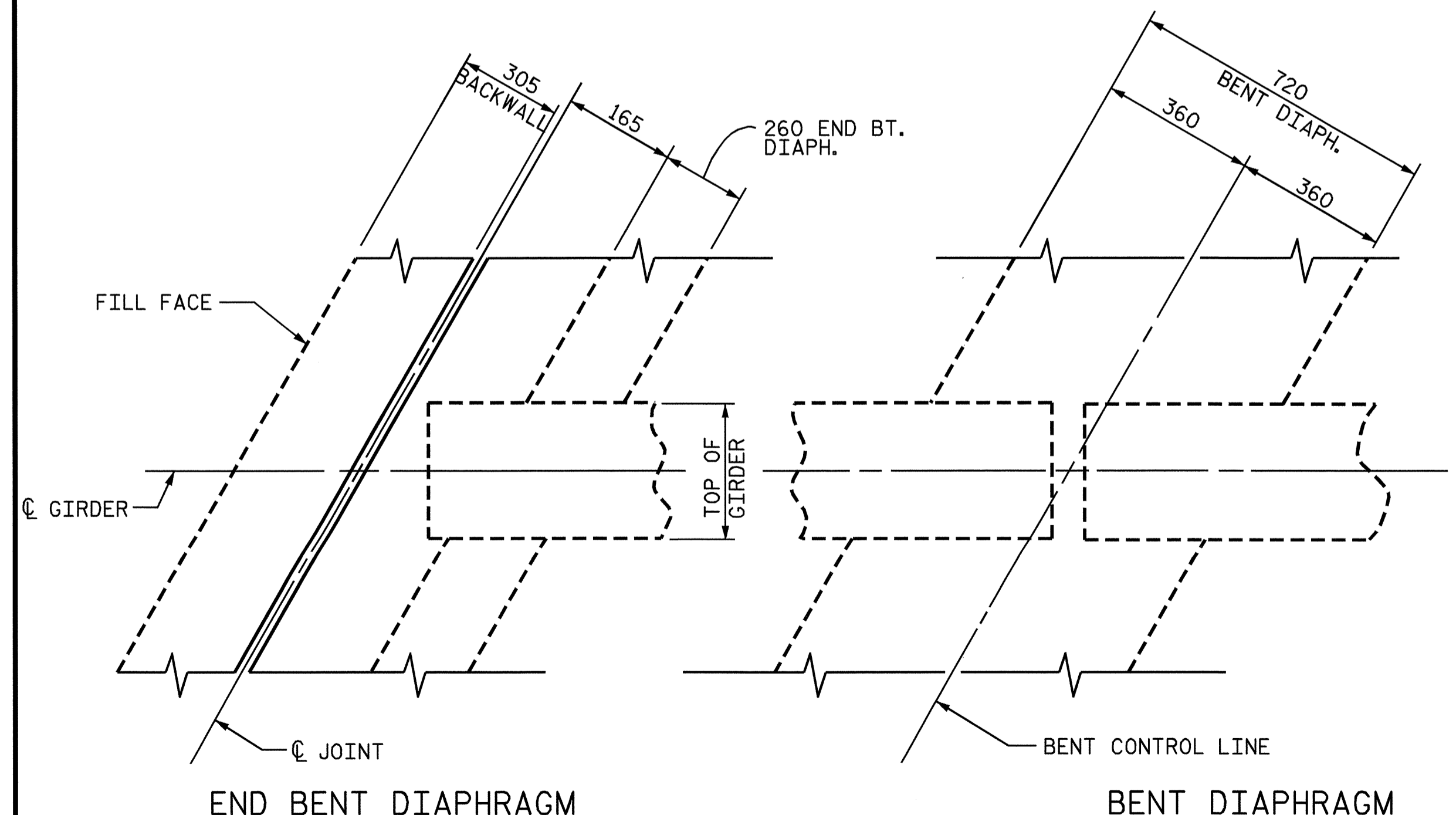


* TO BE SET TO MATCH SLOPE OF BOTTOM OF OVERHANG

PIPE DETAIL

TOP OF FLOOR DRAINS TO SET 10mm BELOW SURFACE OF SLAB.
4 - 13mm \square LUGS TO BE GLUED TO THE P.V.C. PLASTIC PIPE AT EQUAL SPACES AROUND THE PIPE DRAIN.

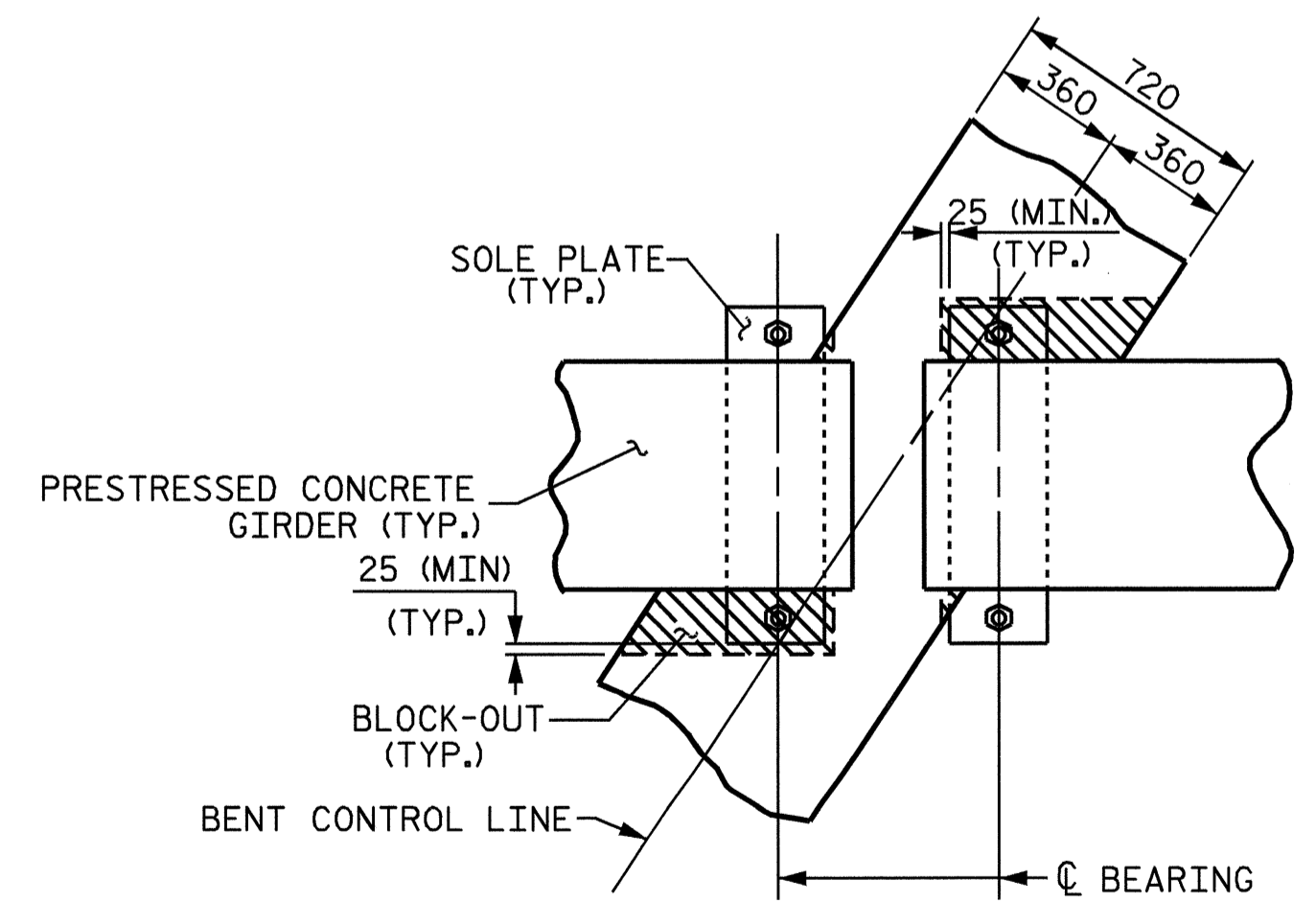
DRAIN DETAILS



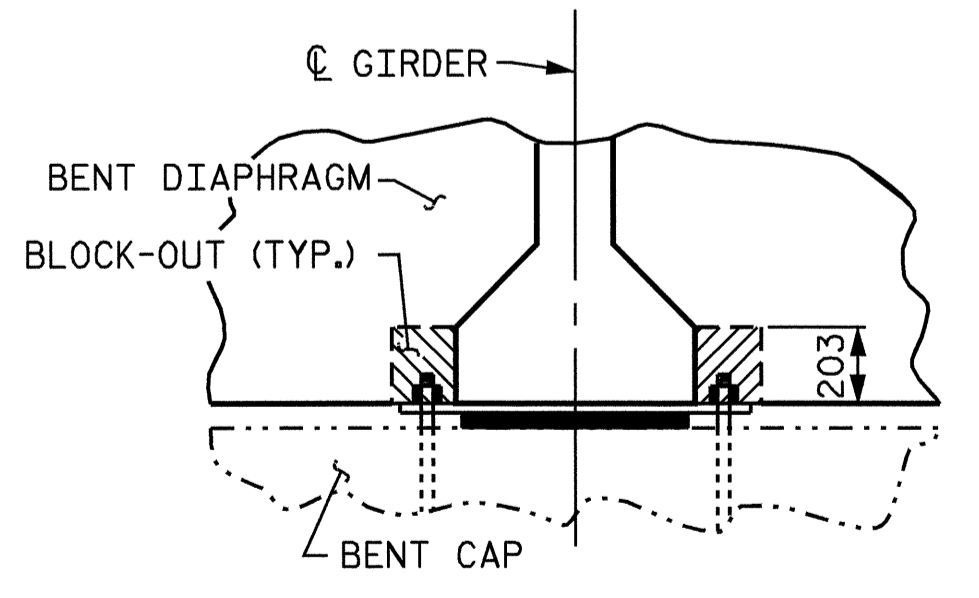
END BENT DIAPHRAGM

BENT DIAPHRAGM

PLAN OF DIAPHRAGMS



PLAN



SECTION

BENT DIAPHRAGM BLOCK-OUT DETAILS



PROJECT NO. R-2568B
DAVIDSON COUNTY
STATION: 61+31.500 -L-

SHEET 2 OF 2

STATE OF NORTH CAROLINA
DEPARTMENT OF TRANSPORTATION
RALEIGH

SUPERSTRUCTURE
TYPICAL SECTIONS
LEFT LANE

REVISIONS						SHEET NO.
NO.	BY:	DATE:	NO.	BY:	DATE:	S-6
1			3			TOTAL SHEETS
2			4			64

DRAWN BY: QT NGUYEN DATE: 10-03
CHECKED BY: V.X. NGUYEN DATE: 7-04

01-OCT-2004 10:55
W:\sdquady\2568b\Final plans\2568blt.dgn
clewis

STR. #1