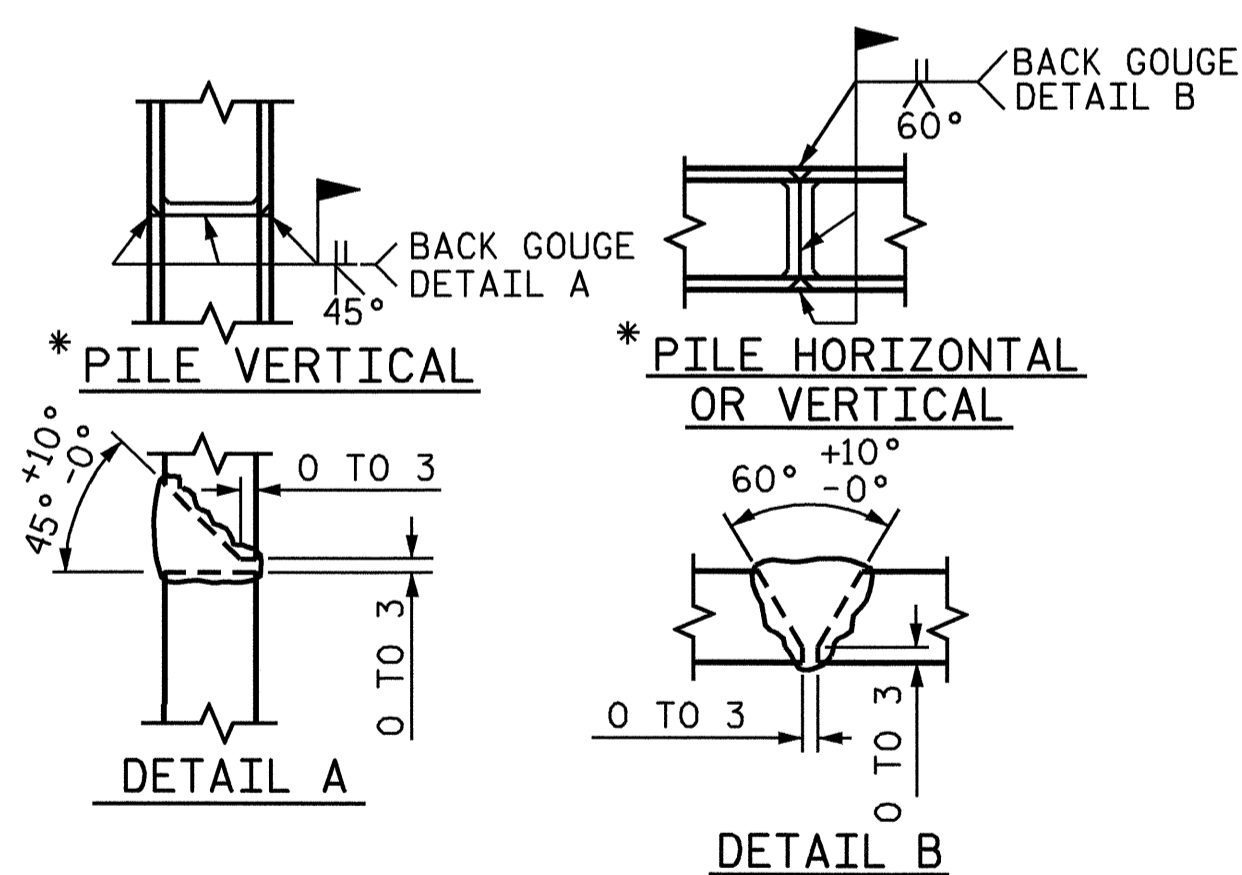


BAGGED STONE AND PIPE SHALL BE PLACED IMMEDIATELY AFTER COMPLETION OF END BENT EXCAVATION. PIPE MAY BE EITHER CONCRETE, CORRUGATED STEEL, CORRUGATED ALUMINUM ALLOY, OR CORRUGATED PLASTIC. PERFORATED PIPE WILL NOT BE ALLOWED.

BAGGED STONE SHALL REMAIN IN PLACE UNTIL THE ENGINEER DIRECTS THAT IT BE REMOVED. THE CONTRACTOR SHALL REMOVE AND DISPOSE OF SILT ACCUMULATIONS AT BAGGED STONE WHEN SO DIRECTED BY THE ENGINEER. BAGS SHALL BE REMOVED AND REPLACED WHENEVER THE ENGINEER DETERMINES THAT THEY HAVE DETERIORATED AND LOST THEIR EFFECTIVENESS.

NO SEPARATE PAYMENT WILL BE MADE FOR THIS WORK AND THE ENTIRE COST OF THIS WORK SHALL BE INCLUDED IN THE UNIT CONTRACT PRICE BID FOR THE SEVERAL PAY ITEMS.

TEMPORARY DRAINAGE AT END BENT



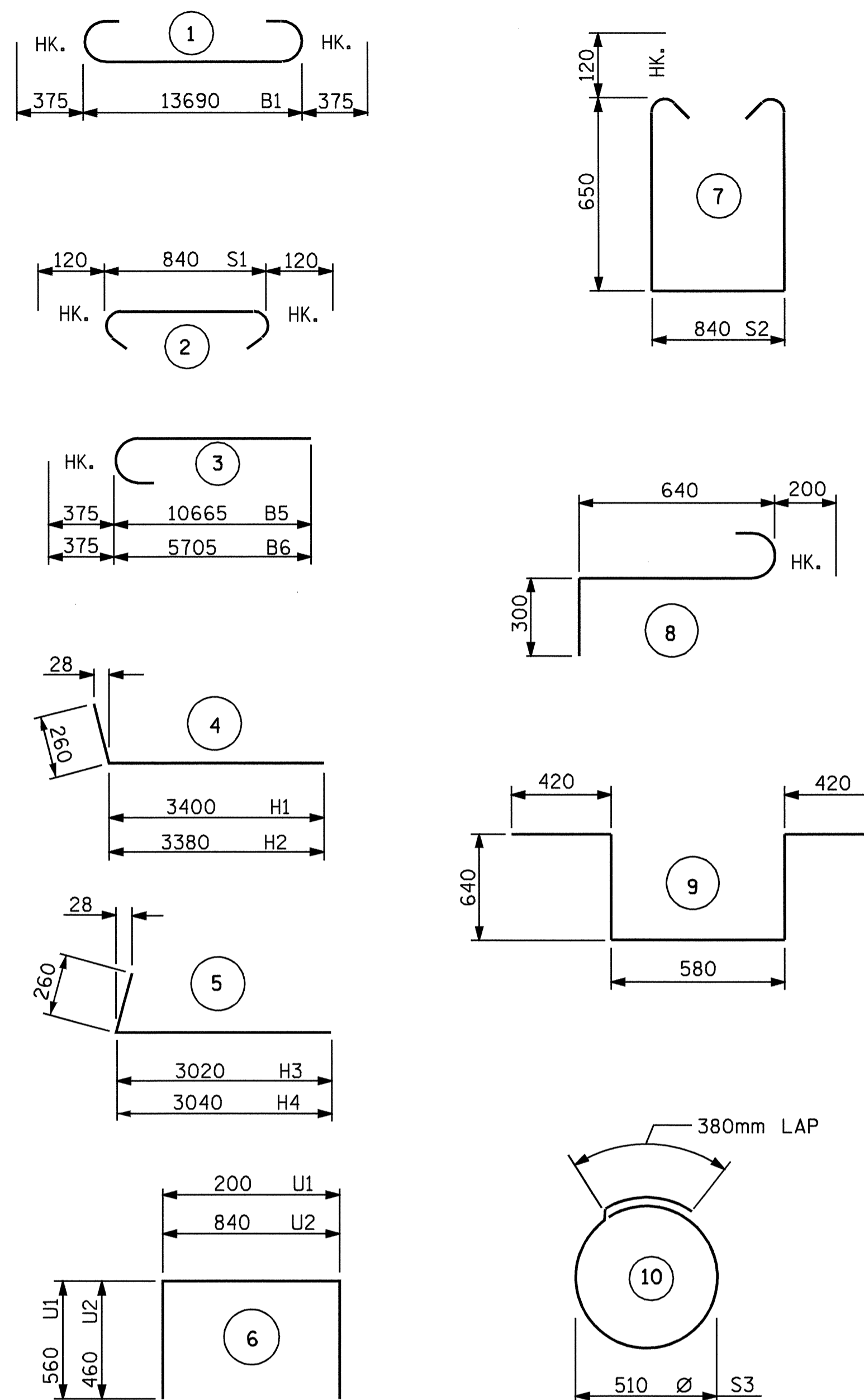
* POSITION OF PILE DURING WELDING.

PILE SPLICE DETAILS

DRAWN BY : QT NGUYEN DATE : 12-03
 CHECKED BY : CR LEWIS DATE : 7-04

08-SEP-2004 09:28
 W:\sdquady\2568b\nguyen\Microstation\sub\2568b2e.dgn
 qtnguyen

BAR TYPES



ALL BAR DIMENSIONS ARE OUT TO OUT.

BILL OF MATERIAL

END BENT #2

BAR	NO.	SIZE	TYPE	LENGTH	WEIGHT
B1	5	#29	1	14440	365
B2	2	#16	STR	13700	43
B3	8	#13	STR	7220	57
B4	14	#13	STR	840	12
B5	5	#29	3	11040	279
B6	5	#29	3	6080	154
B7	10	#13	STR	980	10
B8	2	#16	STR	4080	13
H1	11	#16	4	3660	62
H2	11	#16	4	3640	62
H3	10	#16	5	3280	51
H4	10	#16	5	3300	51
K1	20	#13	STR	7220	144
K2	8	#13	STR	880	7
S1	40	#13	2	1080	43
S2	40	#13	7	2380	95
S3	18	#13	10	1980	35
S4	1	#19	9	2700	6
S5	3	#19	8	1140	8
U1	40	#13	6	1320	52
U2	10	#13	6	1760	17
V1	80	#16	STR	2100	261
V2	32	#16	STR	2680	133
V3	30	#16	STR	2460	115

REINFORCING STEEL = 2075 Kg

CLASS A CONCRETE BREAKDOWN

POUR #1: CAP & LOWER WINGS	12.8 CU. METERS
POUR #2: BACKWALL & UPPER WINGS	9.8 CU. METERS
TOTAL CLASS A CONCRETE	22.6 CU. METERS

HP 310 X 79 STEEL PILES
 NO. 10 30 METERS

PROJECT NO. R-2568B
 DAVIDSON COUNTY
 STATION: 61+31.500 -L-

SHEET 3 OF 3

STATE OF NORTH CAROLINA
 DEPARTMENT OF TRANSPORTATION
 RALEIGH

SUBSTRUCTURE
 END BENT 2



REVISIONS				SHEET NO.
NO.	BY:	DATE:	NO.	DATE:
1			3	
2			4	

S-56
 TOTAL SHEETS
 64

STR. #2