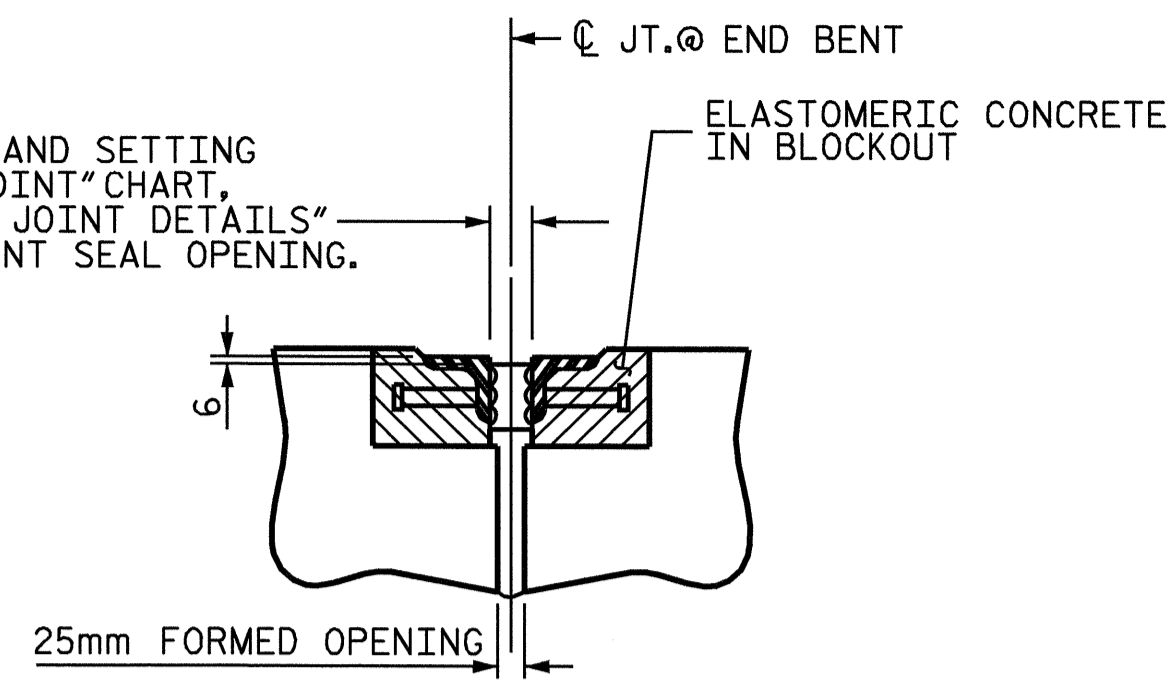
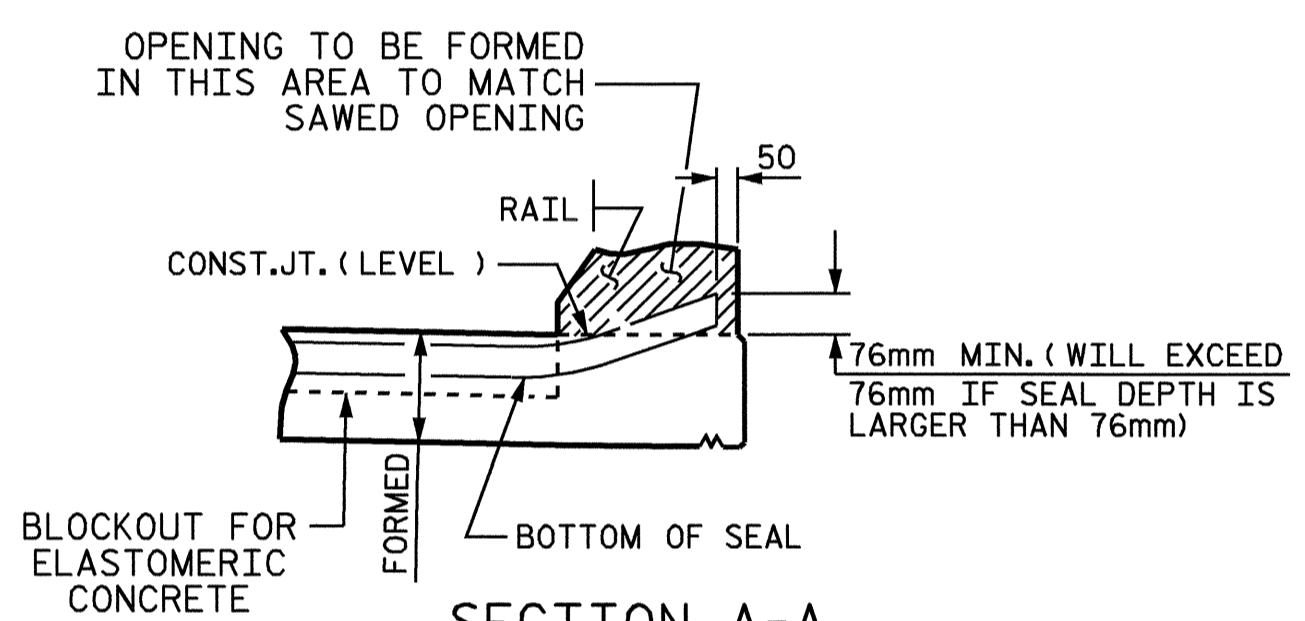


PLAN

SEE "MOVEMENT AND SETTING AT EVAZOTE JOINT" CHART, "ARMORED EVAZOTE JOINT DETAILS" SHEET S-44, FOR JOINT SEAL OPENING.

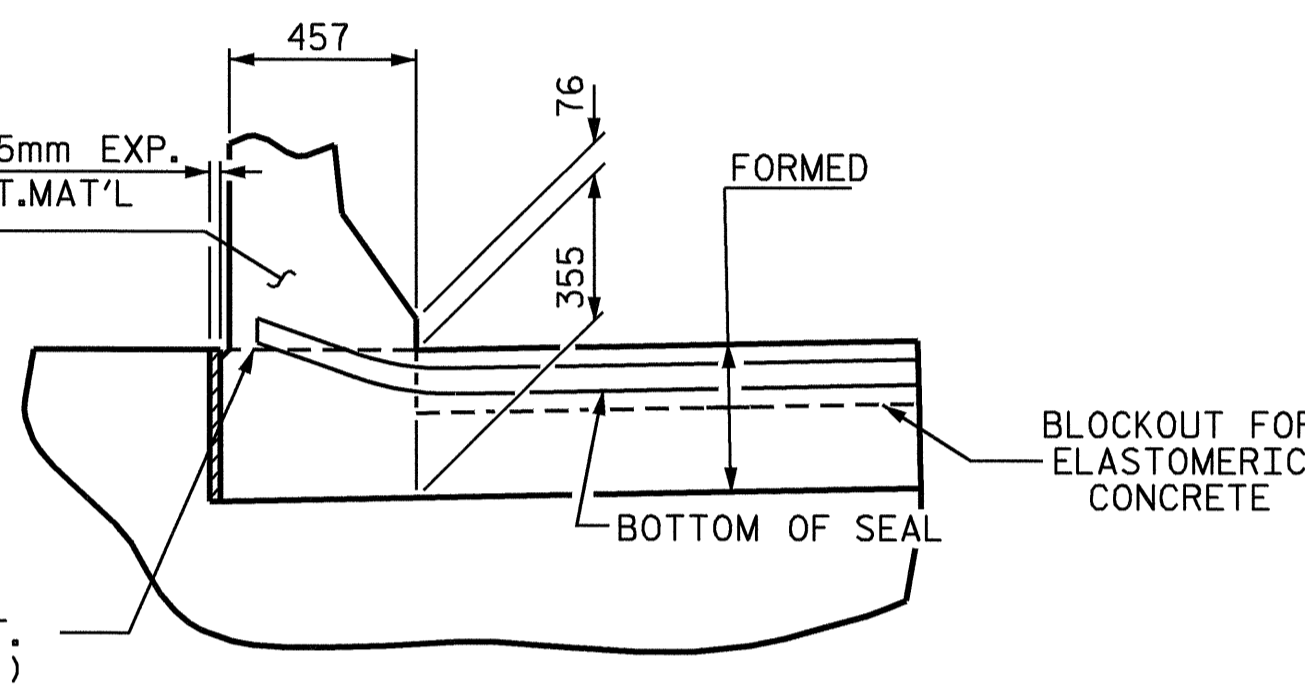


SECTION C-C
ARMORED EVAZOTE JOINT SEAL

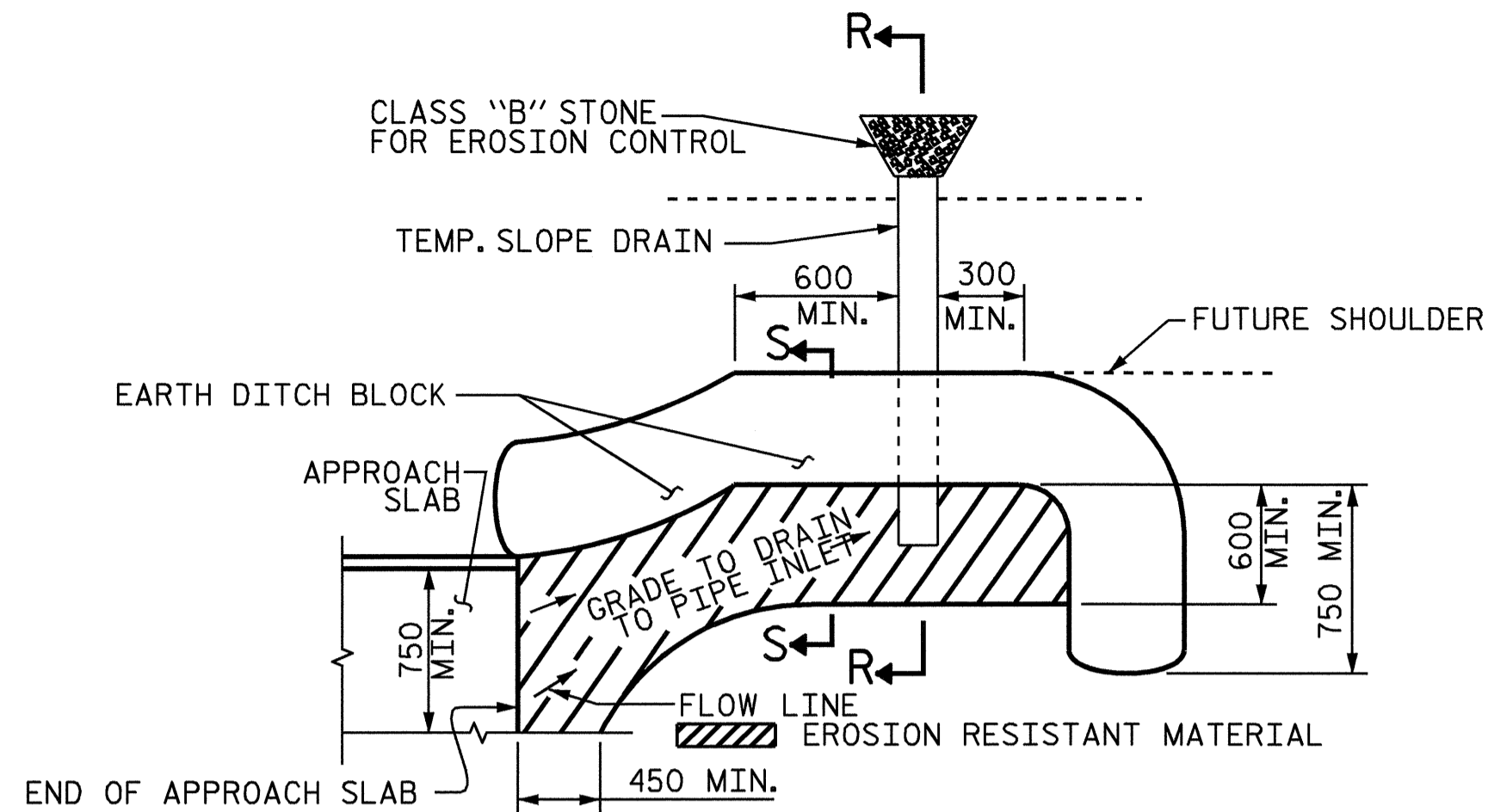


SECTION A-A

OPENING TO BE FORMED IN THIS AREA TO MATCH SAWED OPENING

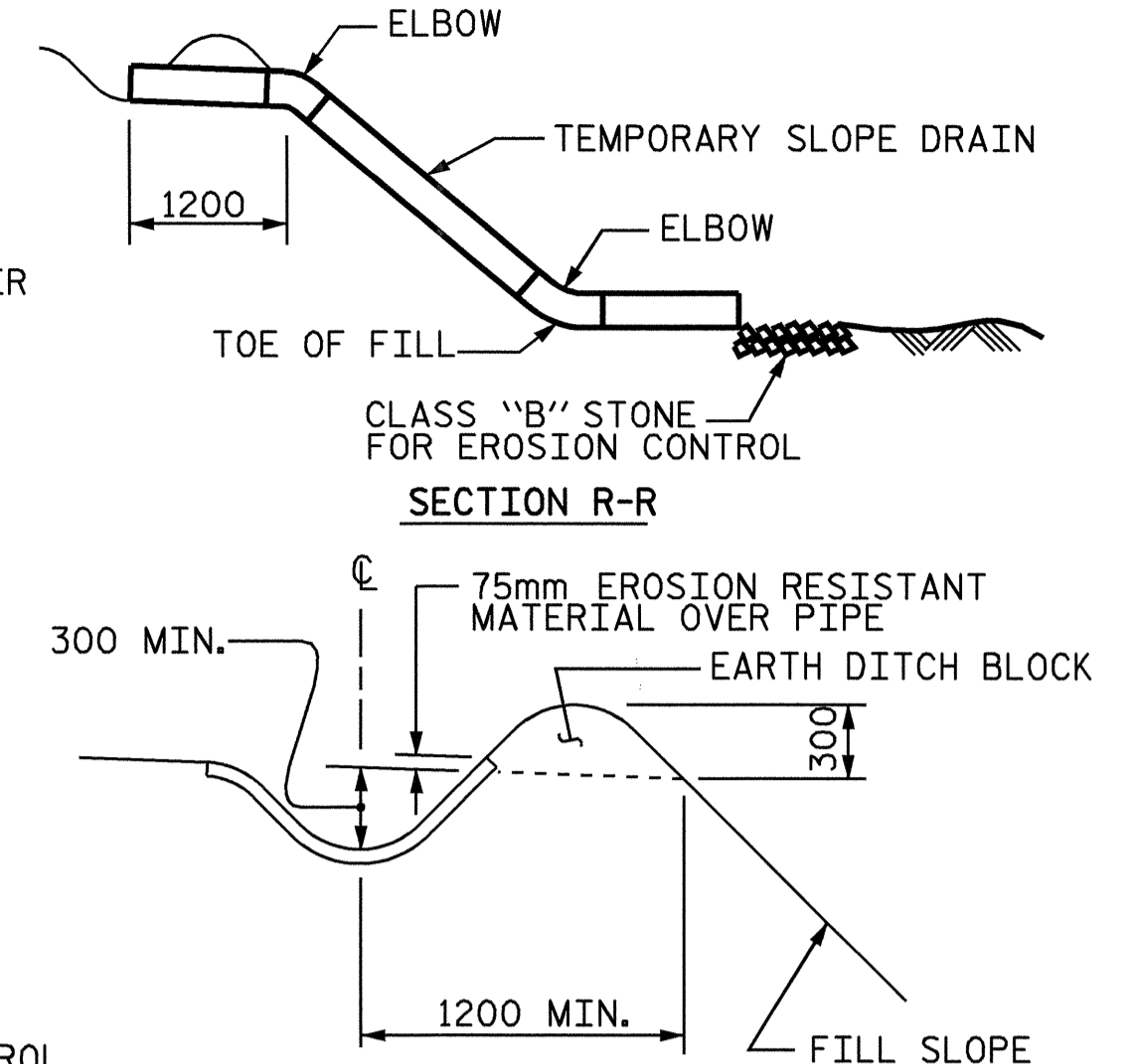


SECTION B-B
JOINT SEAL DETAILS @ END BENT
(FOR BARRIER RAIL)

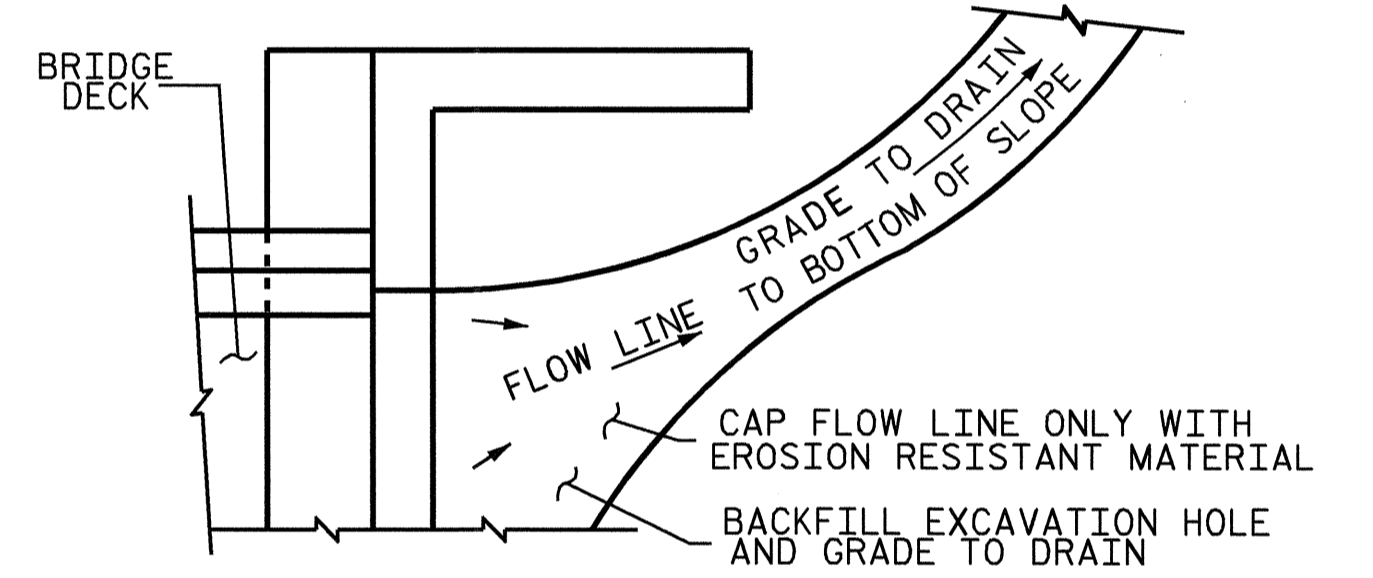


NOTE: IMMEDIATELY AFTER THE CONSTRUCTION OF THE APPROACH SLAB, THE CONTRACTOR SHALL PROVIDE TEMPORARY BERM AND SLOPE DRAIN. CONTRACTOR SHALL GRADE TO PIPE INLET AND PROVIDE EROSION RESISTANT MATERIAL AS SHOWN. THE EROSION RESISTANT MATERIAL SHALL BE EITHER 1) ASPHALT PLANT MIX, TYPE 1 OR TYPE 2, MIN. 50mm DEPTH, 2) EROSION CONTROL MAT, OR 3) CONCRETE, AS DIRECTED BY THE ENGINEER. THE SLOPE DRAIN SHALL CONSIST OF A NON-PERFORATED TEMPORARY DRAINAGE PIPE, 305mm IN DIAMETER.

PLAN VIEW
TEMPORARY BERM AND SLOPE DRAIN DETAILS

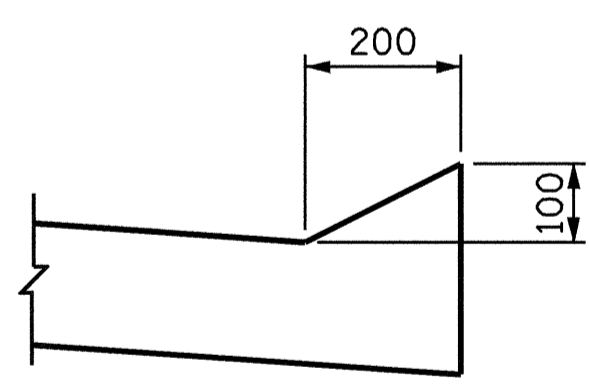


SECTION S-S

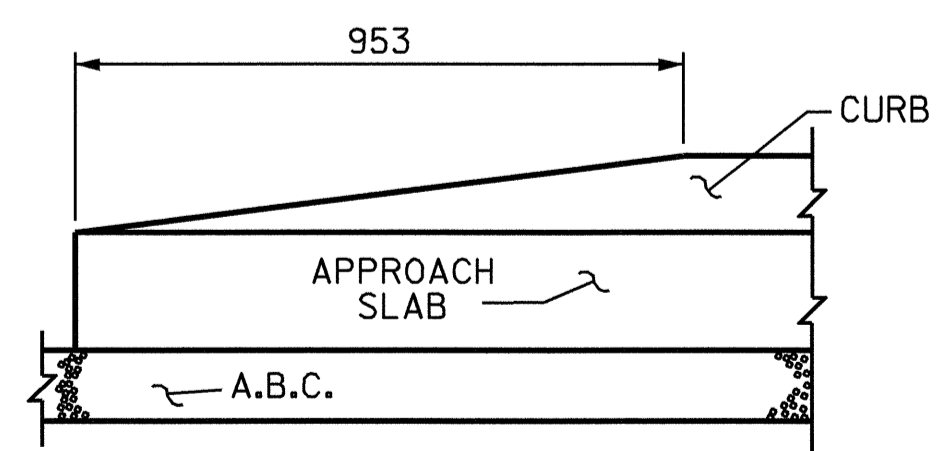


NOTE: IF THE APPROACH SLAB IS NOT CONSTRUCTED IMMEDIATELY AFTER THE BACKFILLING OF THE END BENT EXCAVATION, GRADE TO DRAIN TO THE BOTTOM OF THE SLOPE AND PROVIDE EROSION RESISTANT MATERIAL, SUCH AS FIBERGLASS ROVING OR AS DIRECTED BY THE ENGINEER TO PREVENT SOIL EROSION AND TO PROTECT THE AREA ADJACENT TO THE STRUCTURE. THE CONTRACTOR WILL BE REQUIRED TO REMOVE THESE MATERIALS PRIOR TO CONSTRUCTION OF THE APPROACH SLAB.

TEMPORARY DRAINAGE DETAIL



SECTION N-N



END OF CURB WITHOUT SHOULDER BERM GUTTER
CURB DETAILS

PROJECT NO. R-2568B
DAVIDSON COUNTY
STATION: 61+31.500 -L-

SHEET 4 OF 4

STATE OF NORTH CAROLINA
DEPARTMENT OF TRANSPORTATION
RALEIGH

STANDARD
BRIDGE APPROACH
SLAB DETAILS

RIGHT LANE

REVISIONS						SHEET NO.
NO.	BY:	DATE:	NO.	BY:	DATE:	S-61
1			3			TOTAL SHEETS
2			4			64



ASSEMBLED BY : J. LAMBERT	DATE : 7/04
CHECKED BY : M. G. CHEEK	DATE : 8/04
DRAWN BY : FCJ 11/88	REV. 8/16/99 RAL/ALES
CHECKED BY : ARB 11/88	REV. 10/17/00 RWW/ALES
	REV. 5/7/03 RWW/JTE