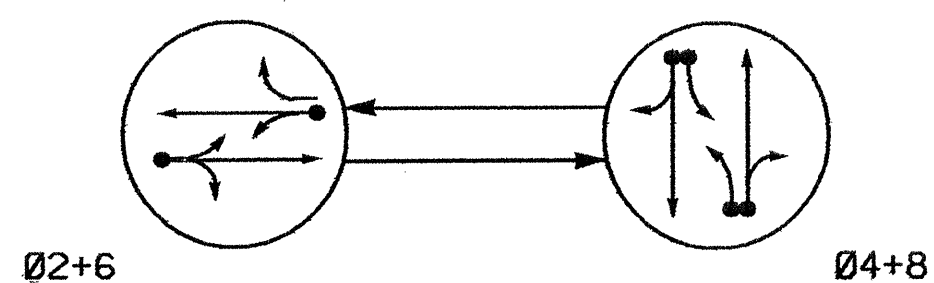


PHASING DIAGRAM



PHASING DIAGRAM DETECTION LEGEND

- ←●→ DETECTED MOVEMENT
- ←○→ UNDETECTED MOVEMENT (OVERLAP)
- ←---→ UNSIGNALIZED MOVEMENT
- ←- - - -> PEDESTRIAN MOVEMENT

| SIGNAL FACE | PHASE | | |
|-------------|-------|------|-------|
| | Ø2+6 | Ø4+8 | FLASH |
| 21,22 | G | R | Y |
| 41,42 | R | G | R |
| 61,62 | G | R | Y |
| 81,82 | R | G | R |

SIGNAL FACE I.D.

Denotes L.E.D.



| 2070L LOOP & DETECTOR INSTALLATION | | | | | | | | | | | | |
|------------------------------------|-----------|-------|---------------------------|----------|----------------------|---------|-----------|-----------------|-------------|--------------|------------|----------|
| INDUCTIVE LOOPS | | | | | DETECTOR PROGRAMMING | | | | | | | |
| LOOP | SIZE (FT) | TURNS | DISTANCE FROM STOPBAR (M) | NEW LOOP | PHASE | CALLING | EXTENSION | FULL TIME DELAY | SYSTEM LOOP | STRETCH TIME | DELAY TIME | NEW CARD |
| 2A | 1.8X1.8 | 6 | 130 | - | 2 | Y | Y | - | - | - | - | - |
| 4A | 1.8X1.8 | 2-4-2 | 0 | - | 4 | Y | Y | - | - | - | 3 | - |
| 4B | 1.8X1.8 | 2-4-2 | 0 | - | 4 | Y | Y | - | - | - | 15 | - |
| 6A | 1.8X1.8 | 6 | 130 | - | 6 | Y | Y | - | - | - | - | - |
| 8A | 1.8X1.2 | 2-4-2 | 0 | Y | 8 | Y | Y | - | - | - | 3 | Y |
| 8B | 1.8X1.2 | 2-4-2 | 0 | Y | 8 | Y | Y | - | - | - | 10 | Y |

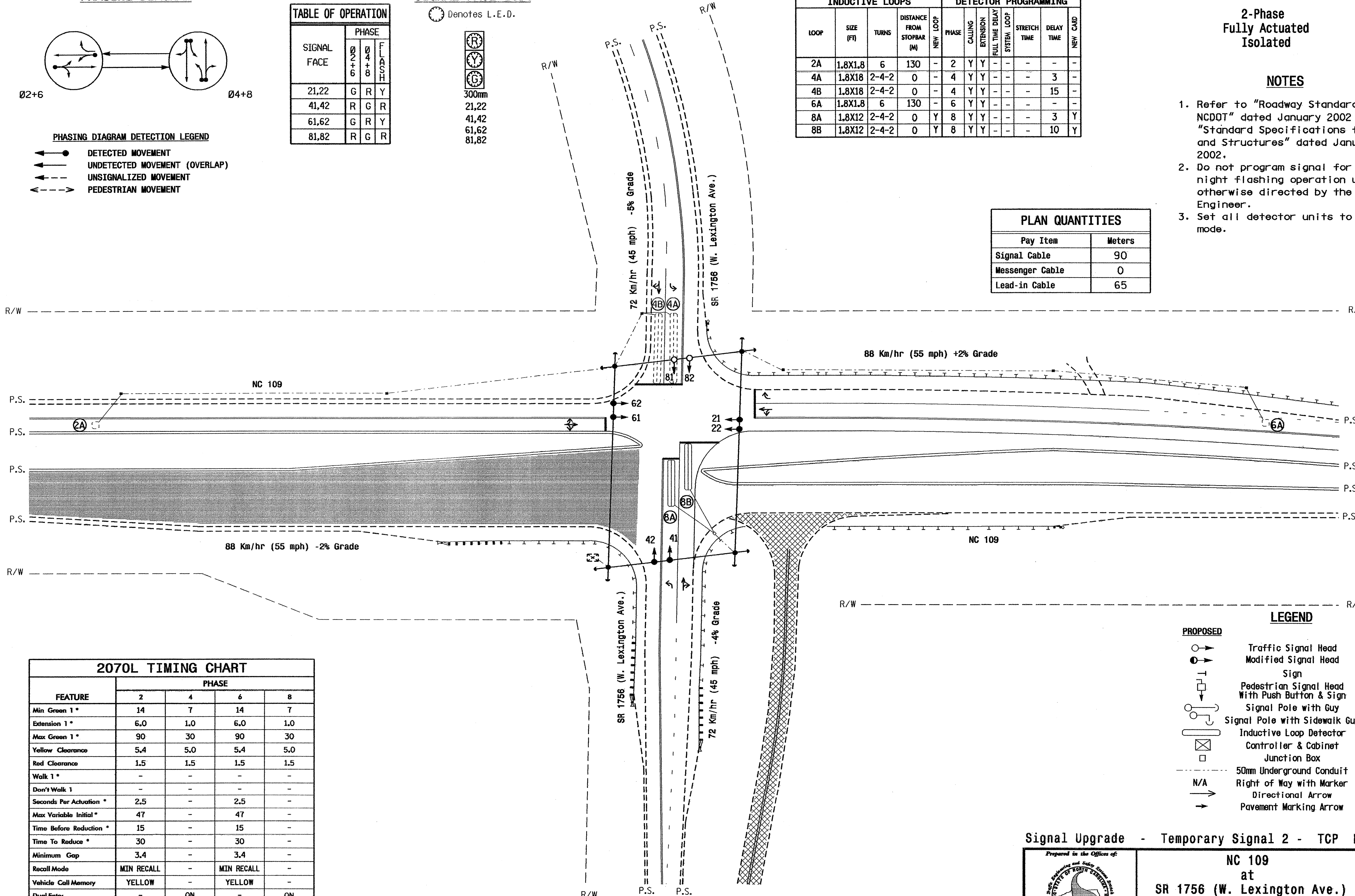
2-Phase Fully Actuated Isolated

NOTES

- Refer to "Roadway Standard Drawings NCDOT" dated January 2002 and "Standard Specifications for Roads and Structures" dated January 2002.
- Do not program signal for late night flashing operation unless otherwise directed by the Engineer.
- Set all detector units to presence mode.

PLAN QUANTITIES

| Pay Item | Meters |
|-----------------|--------|
| Signal Cable | 90 |
| Messenger Cable | 0 |
| Lead-in Cable | 65 |



| 2070L TIMING CHART | | | | |
|-------------------------|------------|-----|------------|-----|
| FEATURE | PHASE | | | |
| | 2 | 4 | 6 | 8 |
| Min Green 1 * | 14 | 7 | 14 | 7 |
| Extension 1 * | 6.0 | 1.0 | 6.0 | 1.0 |
| Max Green 1 * | 90 | 30 | 90 | 30 |
| Yellow Clearance | 5.4 | 5.0 | 5.4 | 5.0 |
| Red Clearance | 1.5 | 1.5 | 1.5 | 1.5 |
| Walk 1 * | - | - | - | - |
| Don't Walk 1 | - | - | - | - |
| Seconds Per Actuation * | 2.5 | - | 2.5 | - |
| Max Variable Initial * | 47 | - | 47 | - |
| Time Before Reduction * | 15 | - | 15 | - |
| Time To Reduce * | 30 | - | 30 | - |
| Minimum Gap | 3.4 | - | 3.4 | - |
| Recall Mode | MIN RECALL | - | MIN RECALL | - |
| Vehicle Call Memory | YELLOW | - | YELLOW | - |
| Dual Entry | - | ON | - | ON |
| Simultaneous Gap | ON | ON | ON | ON |

* These values may be field adjusted. Do not adjust Min Green and Extension times for phases 2 and 6 lower than what is shown. Min Green for all other phases should not be lower than 4 seconds.

| PROPOSED | | EXISTING |
|----------|--|----------|
| ○→ | Traffic Signal Head | ●→ |
| ●→ | Modified Signal Head | N/A |
| ⊥ | Sign | ⊥ |
| ⊥ | Pedestrian Signal Head With Push Button & Sign | ⊥ |
| ⊥ | Signal Pole with Guy | ⊥ |
| ⊥ | Signal Pole with Sidewalk Guy | ⊥ |
| ⊠ | Inductive Loop Detector | ⊠ |
| ⊠ | Controller & Cabinet | ⊠ |
| ⊠ | Junction Box | ⊠ |
| - - - | 50mm Underground Conduit | - - - |
| - - - | Right of Way with Marker | - - - |
| → | Directional Arrow | → |
| → | Pavement Marking Arrow | → |

Signal Upgrade - Temporary Signal 2 - TCP Phase III

| | | | |
|--------------------|--|--------------------------------------|-------------------|
| | <p>NC 109 at SR 1756 (W. Lexington Ave.)</p> | | |
| | <p>Division 9 Davidson County Thomasville</p> | | |
| | <p>PLAN DATE: June 2004</p> | <p>REVIEWED BY: C.J. Collins</p> | |
| | <p>PREPARED BY: Luhr</p> | <p>REVIEWED BY:</p> | |
| <p>SCALE 1:500</p> | | <p>REVISIONS</p> | <p>INIT. DATE</p> |
| <p>8/2/04</p> | | <p>SIG. INVENTORY NO. 09-1292 T2</p> | |