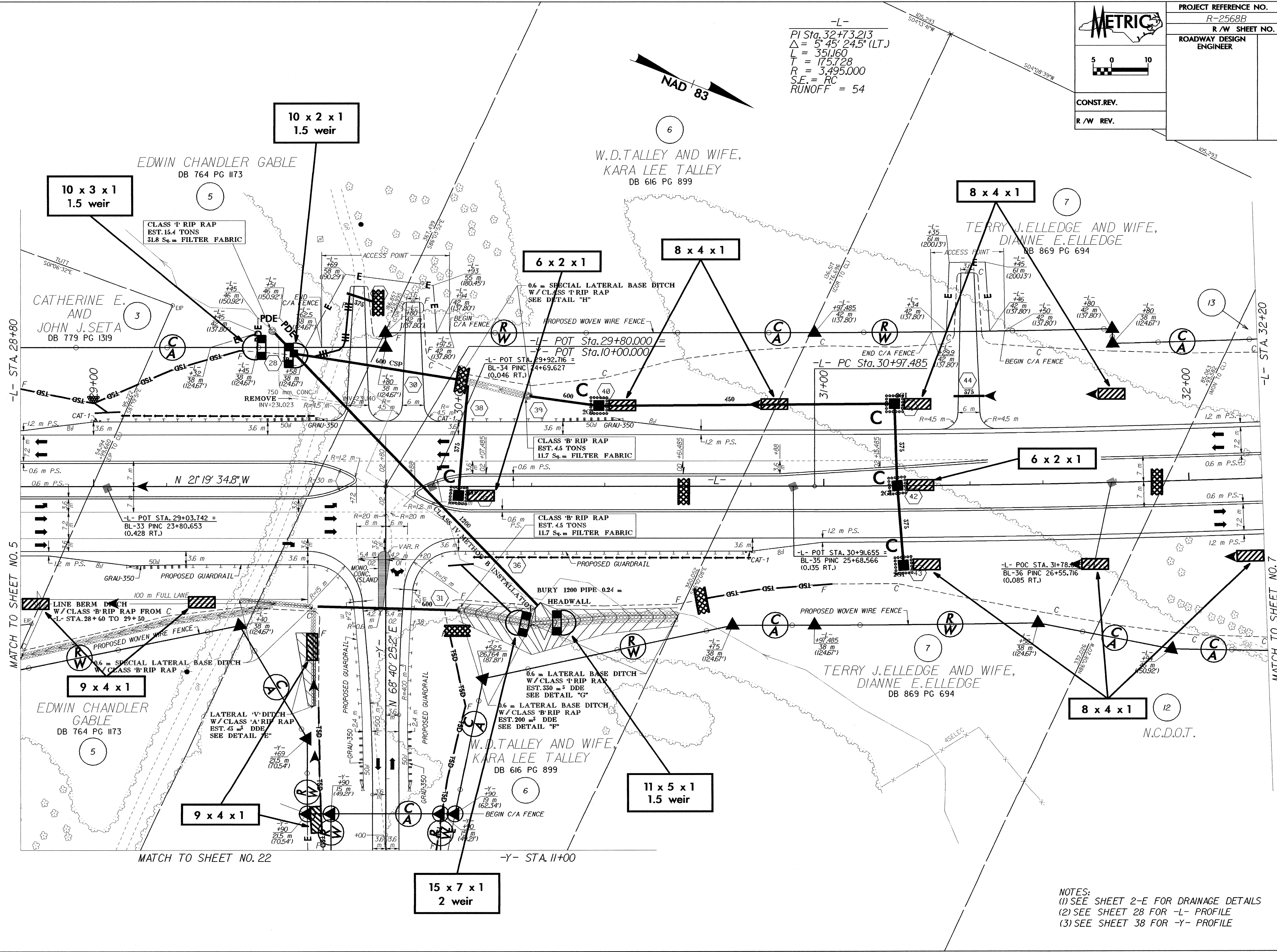
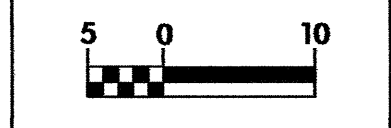
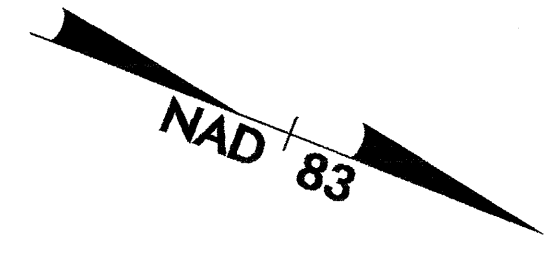
	PROJECT REFERENCE NO.	SHEET NO.
	R-2568B	EC-27/CONST.6
	R/W SHEET NO.	6
ROADWAY DESIGN ENGINEER	HYDRAULICS ENGINEER	
CONST. REV.		
R/W REV.		

-L-
 PI Sta. 32+73.213
 $\Delta = 5^{\circ} 45' 24.5" (LT.)$
 $L = 351.60$
 $T = 175.728$
 $R = 3,495.000$
 $S.E. = RC$
 $RUNOFF = 54$



NOTES:
 (1) SEE SHEET 2-E FOR DRAINAGE DETAILS
 (2) SEE SHEET 28 FOR -L- PROFILE
 (3) SEE SHEET 38 FOR -Y- PROFILE