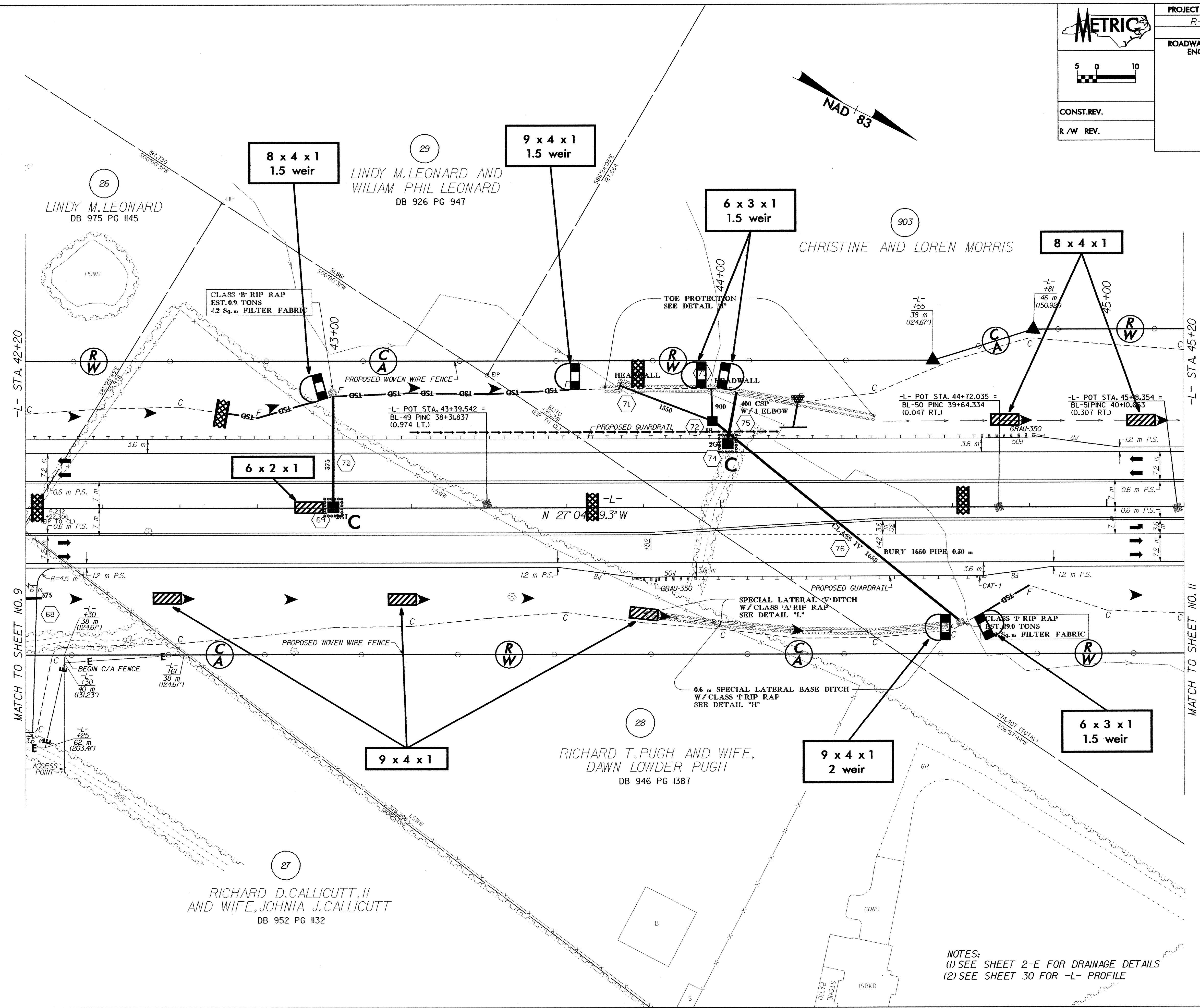
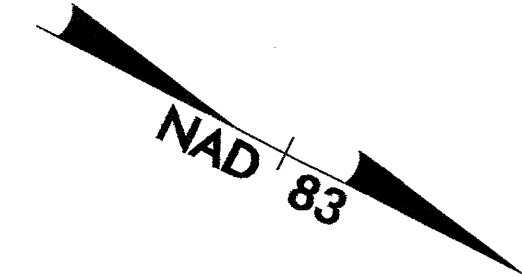
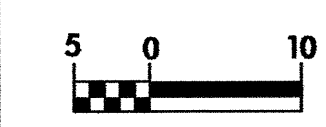
	PROJECT REFERENCE NO.	SHEET NO.
	R-2568B	EC-31/CONST 10
	R/W SHEET NO.	10
	ROADWAY DESIGN ENGINEER	HYDRAULICS ENGINEER
CONST. REV.		
R/W REV.		



-L- STA. 42+20

-L- STA. 45+20

MATCH TO SHEET NO. 9

MATCH TO SHEET NO. 11

26  
LINDY M. LEONARD  
DB 975 PG 1145

29  
LINDY M. LEONARD AND  
WILIAM PHIL LEONARD  
DB 926 PG 947

903  
CHRISTINE AND LOREN MORRIS

27  
RICHARD D. CALLICUTT, II  
AND WIFE, JOHNNIA J. CALLICUTT  
DB 952 PG 1132

28  
RICHARD T. PUGH AND WIFE,  
DAWN LOWDER PUGH  
DB 946 PG 1387

NOTES:  
(1) SEE SHEET 2-E FOR DRAINAGE DETAILS  
(2) SEE SHEET 30 FOR -L- PROFILE