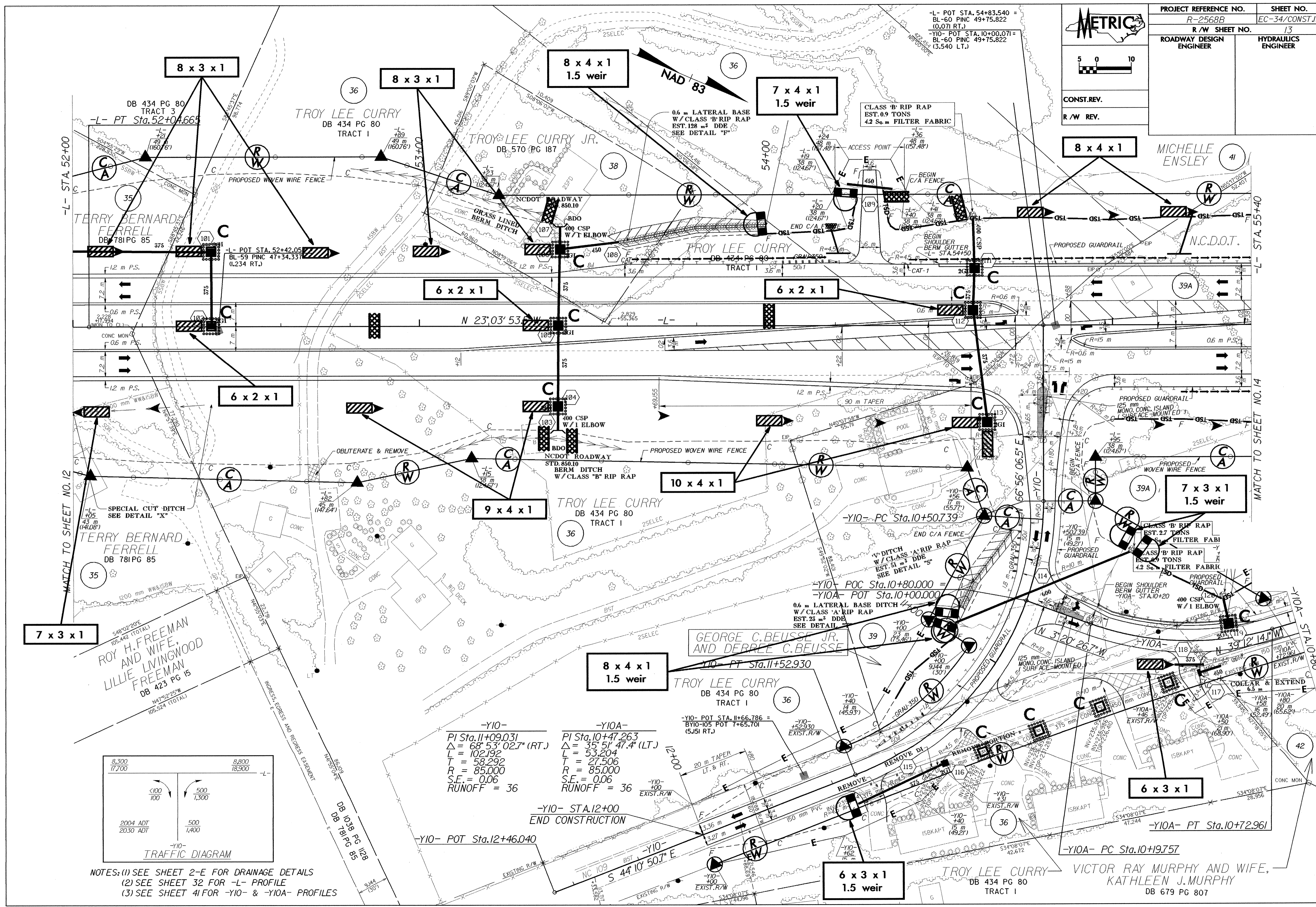
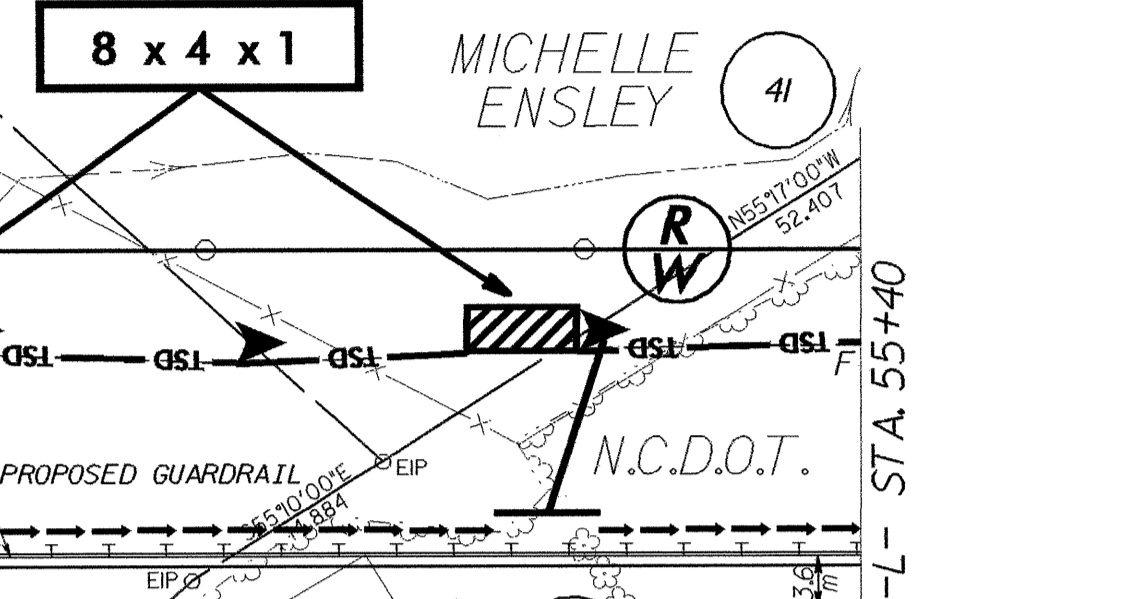
	PROJECT REFERENCE NO.	SHEET NO.
	R-2568B	EC-34/CONST.13
	R/W SHEET NO.	13
ROADWAY DESIGN ENGINEER	HYDRAULICS ENGINEER	

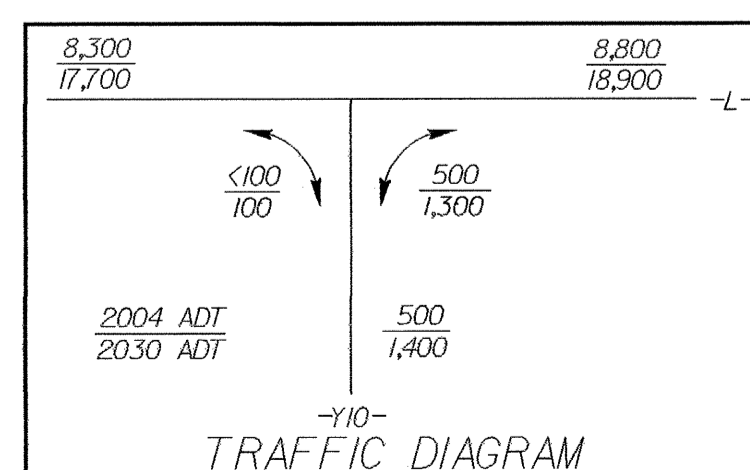


-L- STA. 52+00

-L- STA. 55+40

MATCH TO SHEET NO. 12

MATCH TO SHEET NO. 14



NOTES: (1) SEE SHEET 2-E FOR DRAINAGE DETAILS  
 (2) SEE SHEET 32 FOR -L- PROFILE  
 (3) SEE SHEET 41 FOR -Y10- & -Y10A- PROFILES

-Y10-  
 PI Sta. 11+09.031  
 $\Delta = 68^\circ 53' 02.7''$  (RT.)  
 L = 102.192  
 T = 58.292  
 R = 85.000  
 S.E. = 0.06  
 RUNOFF = 36

-Y10A-  
 PI Sta. 10+47.263  
 $\Delta = 35^\circ 51' 47.4''$  (LT.)  
 L = 53.204  
 T = 27.506  
 R = 85.000  
 S.E. = 0.06  
 RUNOFF = 36

-Y10- STA. 12+00  
 END CONSTRUCTION

-Y10- POT Sta. 12+46.040

-Y10- POT STA. 11+66.786 =  
 BY10-105 POT 7+65.701  
 (5.151 RT.)

-Y10- PT Sta. 11+52.930

6 x 3 x 1  
 1.5 weir

6 x 3 x 1

-Y10A- PT Sta. 10+72.961

-Y10A- PC Sta. 10+19.757

TROY LEE CURRY  
 DB 434 PG 80  
 TRACT I

VICTOR RAY MURPHY AND WIFE,  
 KATHLEEN J. MURPHY  
 DB 679 PG 807

ROY H. FREEMAN  
 AND WIFE,  
 LILLIE LIVINGOOD  
 FREEMAN  
 DB 423 PG 15

TERRY BERNARD  
 FERRELL  
 DB 781 PG 85

DB 434 PG 80  
 TRACT 3  
 -L- PT Sta. 52+04.665

TROY LEE CURRY  
 DB 434 PG 80  
 TRACT I

TROY LEE CURRY JR.  
 DB 570 PG 187

TROY LEE CURRY  
 DB 424 PG 90  
 TRACT I

TROY LEE CURRY  
 DB 434 PG 80  
 TRACT I

GEORGE C. BEUSSE JR.  
 AND DEBBIE C. BEUSSE

MICHELLE  
 ENSLEY (41)

39A

39A

39A

42

-L- POT STA. 54+83.540 =  
 BL-60 PINC 49+75.822  
 (0.071 RT.)  
 -Y10- POT STA. 10+00.071 =  
 BL-60 PINC 49+75.822  
 (3.540 LT.)

CLASS 'B' RIP RAP  
 EST. 0.9 TONS  
 42 Sq. m FILTER FABRIC

CLASS 'B' RIP RAP  
 EST. 2.7 TONS  
 42 Sq. m FILTER FABRIC

CLASS 'B' RIP RAP  
 EST. 4.0 TONS  
 42 Sq. m FILTER FABRIC

0.6 m LATERAL BASE  
 DITCH  
 W/ CLASS 'A' RIP RAP  
 EST. 23 m<sup>3</sup> DBB  
 SEE DETAIL "S"

-Y10- PC Sta. 10+80.000 =  
 -Y10A- POT Sta. 10+100.000

0.6 m LATERAL BASE  
 DITCH  
 W/ CLASS 'A' RIP RAP  
 EST. 51 m<sup>3</sup> DDE  
 SEE DETAIL "S"

0.6 m LATERAL BASE  
 DITCH  
 W/ CLASS 'B' RIP RAP  
 EST. 128 m<sup>3</sup> DDE  
 SEE DETAIL "P"

0.6 m LATERAL BASE  
 DITCH  
 W/ CLASS 'B' RIP RAP  
 EST. 23 m<sup>3</sup> DBB  
 SEE DETAIL "S"

0.6 m LATERAL BASE  
 DITCH  
 W/ CLASS 'B' RIP RAP  
 EST. 23 m<sup>3</sup> DBB  
 SEE DETAIL "S"

0.6 m LATERAL BASE  
 DITCH  
 W/ CLASS 'B' RIP RAP  
 EST. 23 m<sup>3</sup> DBB  
 SEE DETAIL "S"

0.6 m LATERAL BASE  
 DITCH  
 W/ CLASS 'B' RIP RAP  
 EST. 23 m<sup>3</sup> DBB  
 SEE DETAIL "S"

0.6 m LATERAL BASE  
 DITCH  
 W/ CLASS 'B' RIP RAP  
 EST. 23 m<sup>3</sup> DBB  
 SEE DETAIL "S"

0.6 m LATERAL BASE  
 DITCH  
 W/ CLASS 'B' RIP RAP  
 EST. 23 m<sup>3</sup> DBB  
 SEE DETAIL "S"

ACCESS POINT  
 (157.48')

BEGIN C/A FENCE  
 (157.48')

BEGIN SHOULDER  
 BERM GUTTER  
 L- STA. 54+150

BEGIN SHOULDER  
 BERM GUTTER  
 L- STA. 54+150

BEGIN SHOULDER  
 BERM GUTTER  
 L- STA. 54+150

BEGIN SHOULDER  
 BERM GUTTER  
 L- STA. 54+150

BEGIN SHOULDER  
 BERM GUTTER  
 L- STA. 54+150

BEGIN SHOULDER  
 BERM GUTTER  
 L- STA. 54+150

BEGIN SHOULDER  
 BERM GUTTER  
 L- STA. 54+150

BEGIN SHOULDER  
 BERM GUTTER  
 L- STA. 54+150

BEGIN SHOULDER  
 BERM GUTTER  
 L- STA. 54+150

BEGIN SHOULDER  
 BERM GUTTER  
 L- STA. 54+150

BEGIN SHOULDER  
 BERM GUTTER  
 L- STA. 54+150

BEGIN SHOULDER  
 BERM GUTTER  
 L- STA. 54+150

BEGIN SHOULDER  
 BERM GUTTER  
 L- STA. 54+150

BEGIN SHOULDER  
 BERM GUTTER  
 L- STA. 54+150

BEGIN SHOULDER  
 BERM GUTTER  
 L- STA. 54+150

BEGIN SHOULDER  
 BERM GUTTER  
 L- STA. 54+150

BEGIN SHOULDER  
 BERM GUTTER  
 L- STA. 54+150

BEGIN SHOULDER  
 BERM GUTTER  
 L- STA. 54+150

BEGIN SHOULDER  
 BERM GUTTER  
 L- STA. 54+150

BEGIN SHOULDER  
 BERM GUTTER  
 L- STA. 54+150