



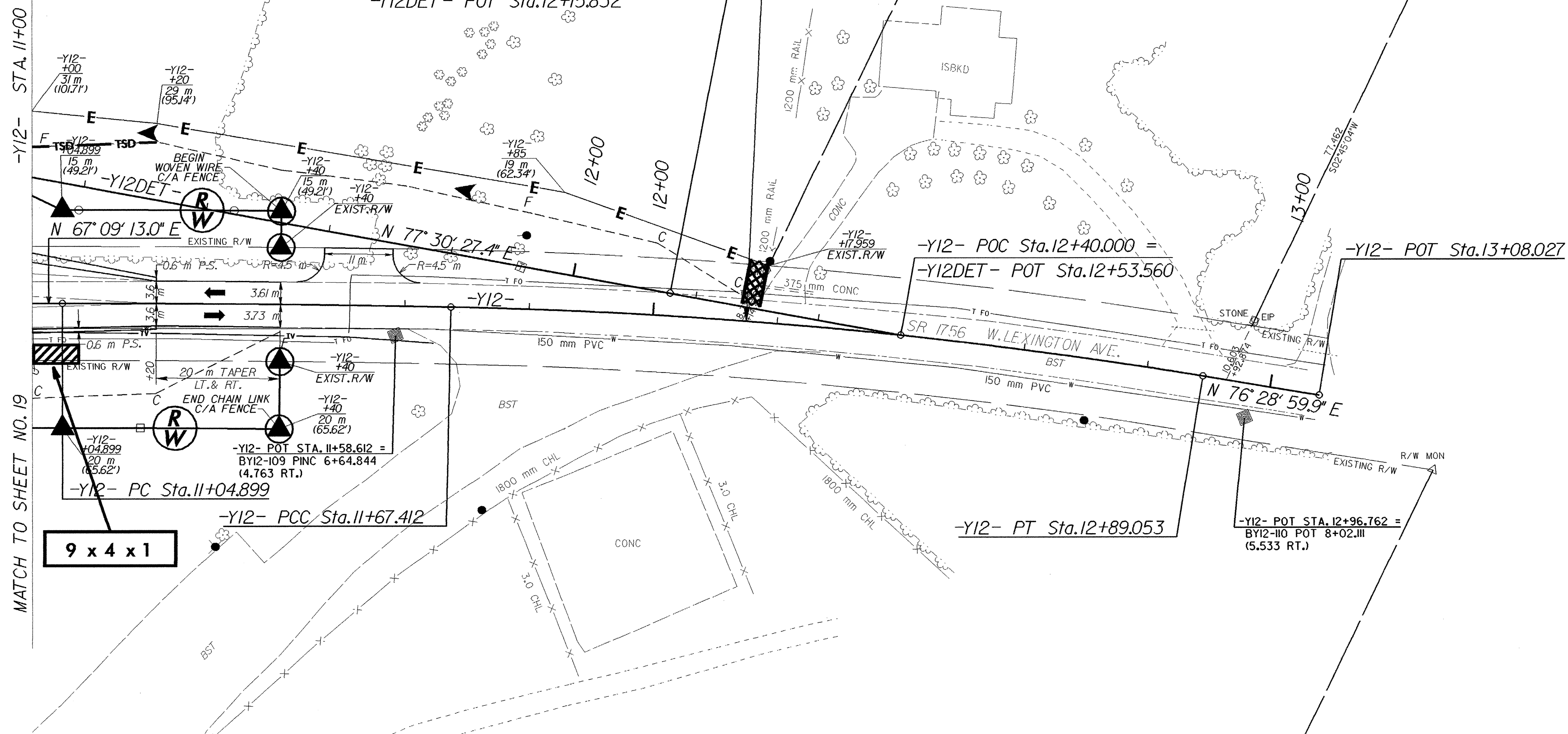
CONST. REV.

R/W REV.

PROJECT REFERENCE NO.	SHEET NO.
R-2568B	EC-45/CONST.24
R/W SHEET NO.	24
ROADWAY DESIGN ENGINEER	HYDRAULICS ENGINEER

-Y12-  
 PI Sta. 11+36.157    PI Sta. 12+28.334  
 $\Delta = 1' 13' 48.7''$  (RT.)     $\Delta = 8' 05' 58.2''$  (RT.)  
 $L = 62.513$      $L = 121.641$   
 $T = 31.258$      $T = 60.922$   
 $R = 2,911.508$      $R = 860.484$   
 S.E. = NC

MATCH TO SHEET NO. 19



59  
 DAVIDSON COUNTY BD. OF ED.  
 DB 286 PG 80  
 DB 286 PG 97  
 DB 113 PG 115  
 DB 94 PG 541

NOTES: (1) SEE SHEET 42 FOR -Y12- PROFILE  
 (2) SEE SHEET 25 FOR -Y12DET-