

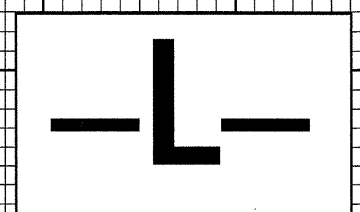


5/28/99

PROJECT REFERENCE NO. B-4096	SHEET NO. 5
ROADWAY DESIGN ENGINEER 	HYDRAULICS ENGINEER 

BM-2 RR SPIKE IN BASE OF 18" OAK
42' OFF EASTERN EP ON COLLEGE LOOP RD.
NORTH OF SEWAGE PUMP STATION
263' LT OF -BL- STA. 13+24 (-L- STA.
19+56.19 OFF 243.81' (LT))
ELEV. = 677.97



BRIDGE HYDRAULIC DATA

DESIGN DISCHARGE = 7,000 CFS
DESIGN FREQUENCY = 50 YRS
DESIGN HW ELEVATION = 663J FT
BASE DISCHARGE = 8,400 CFS
BASE FREQUENCY = 100 YRS
BASE HW ELEVATION = 663.9 FT
OVERTOPPING DISCHARGE = NA
OVERTOPPING FREQUENCY = >500 YRS
OVERTOPPING ELEVATION = 672.3 FT

DATE OF SURVEY = 11/07/02
W.S. ELEVATION = 653.0 FT

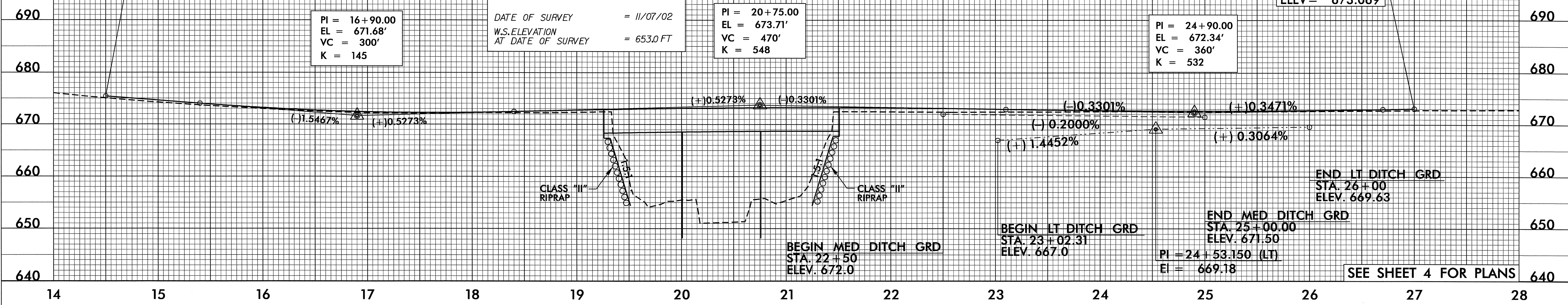
BEGIN GRADE
-L- STA 14+50
ELEV = 675.392

PI = 16+90.00
EL = 671.68'
VC = 300'
K = 145

PI = 20+75.00
EL = 673.71'
VC = 470'
K = 548

PI = 24+90.00
EL = 672.34'
VC = 360'
K = 532

END GRADE
-L- STA 27+00
ELEV = 673.069



SEE SHEET 4 FOR PLANS

21-JUL-2004 07:58
R:\Projects\B4096-1\Drawings\15.dwg
JB Thompson A: RD153407