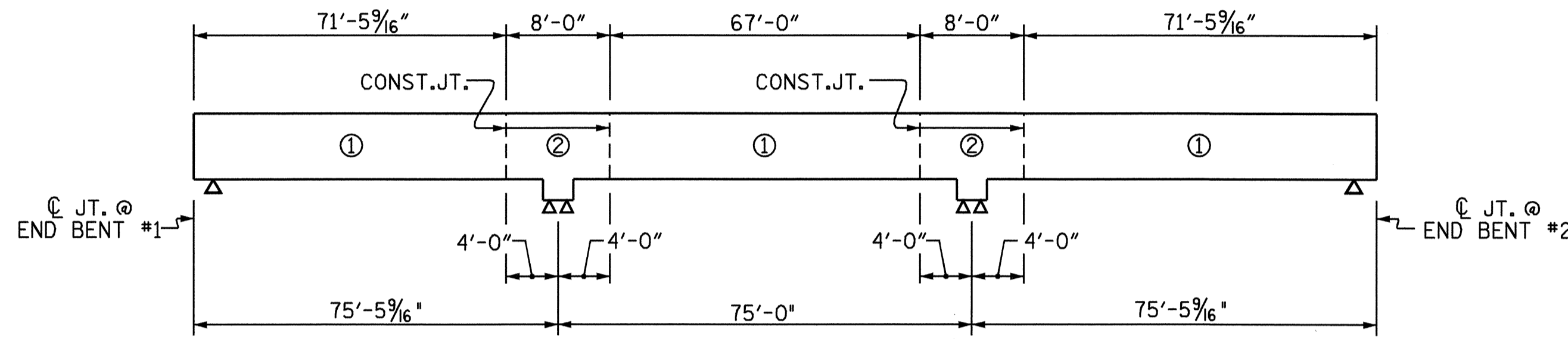


3 SPANS

POURING SEQUENCE-PRESTRESSED CONCRETE SUPERSTRUCTURE
(CONTINUOUS FOR LIVE LOAD)



KEY

* POUR ② CAN NOT BE STARTED UNTIL BOTH ADJACENT ① POURS REACH A MINIMUM OF 3000 PSI.

OPTIONAL POURING SEQUENCE-PRESTRESSED CONCRETE SUPERSTRUCTURE
(CONTINUOUS FOR LIVE LOAD)

SUPERSTRUCTURE REINFORCING STEEL LENGTHS ARE BASED ON THE FOLLOWING MINIMUM SPLICE LENGTHS

BAR SIZE	SUPERSTRUCTURE EXCEPT APPROACH SLABS, PARAPET, AND BARRIER RAIL		APPROACH SLABS		PARAPET AND BARRIER RAIL
	EPOXY COATED	UNCOATED	EPOXY COATED	UNCOATED	
#4	2'-0"	1'-9"	2'-0"	1'-9"	2'-9"
#5	2'-6"	2'-2"	2'-6"	2'-2"	3'-5"
#6	3'-0"	2'-7"	3'-10"	2'-7"	4'-4"
#7	5'-3"	3'-6"			
#8	6'-10"	4'-7"			

GROOVING BRIDGE FLOORS
BRIDGE DECK 7433 SQ. FT.

BILL OF MATERIAL											
SPANS A, B, & C											
BAR NO.	NO.	SIZE	TYPE	LENGTH	WEIGHT	BAR NO.	NO.	SIZE	TYPE	LENGTH	WEIGHT
*A1	407	#5	STR	38'-11"	16520	A213	4	#5	STR	16'-4"	68
A2	407	#5	STR	38'-9"	16520	A214	4	#5	STR	14'-6"	60
						A215	4	#5	STR	12'-11"	54
*A101	4	#5	STR	37'-2"	155	A216	4	#5	STR	11'-2"	47
*A102	4	#5	STR	35'-5"	148	A217	4	#5	STR	9'-5"	39
*A103	4	#5	STR	33'-8"	140	A218	4	#5	STR	7'-8"	32
*A104	4	#5	STR	31'-11"	133	A219	4	#5	STR	6'-0"	25
*A105	4	#5	STR	30'-3"	126	A220	4	#5	STR	4'-3"	18
*A106	4	#5	STR	28'-6"	119	A221	8	#5	STR	2'-6"	21
*A107	4	#5	STR	26'-9"	112						
*A108	4	#5	STR	25'-0"	104	*B1	108	#4	STR	27'-4"	1972
*A109	4	#5	STR	23'-3"	97	*B2	102	#5	STR	55'-0"	5851
*A110	4	#5	STR	21'-7"	90	*B3	96	#5	STR	22'-6"	2253
*A111	4	#5	STR	19'-10"	83	*B4	27	#4	STR	30'-0"	541
*A112	4	#5	STR	18'-1"	75	B5	188	#5	STR	58'-1"	11389
*A113	4	#5	STR	16'-4"	68						
*A114	4	#5	STR	14'-6"	60	*G1	2	#5	STR	44'-11"	94
*A115	4	#5	STR	12'-11"	54						
*A116	4	#5	STR	11'-2"	47	*K1	8	#8	1	13'-7"	290
*A117	4	#5	STR	9'-5"	39	*K2	8	#8	2	20'-7"	440
*A118	4	#5	STR	7'-8"	32	*K3	18	#6	STR	10'-0"	270
*A119	4	#5	STR	6'-0"	25	K4	12	#4	STR	8'-3"	66
*A120	4	#5	STR	4'-3"	18	K5	36	#4	STR	11'-2"	269
*A121	8	#5	STR	2'-6"	21	K6	12	#4	STR	10'-0"	80
						K7	20	#4	7	9'-4"	124
A201	4	#5	STR	37'-2"	155	K8	20	#4	8	16'-2"	216
A202	4	#5	STR	35'-5"	148	K9	18	#5	STR	8'-4"	156
A203	4	#5	STR	33'-8"	140	K10	18	#5	5	9'-4"	175
A204	4	#5	STR	31'-11"	133						
A205	4	#5	STR	30'-3"	126	*S1	54	#5	6	5'-11"	333
A206	4	#5	STR	28'-6"	119	*S2	54	#4	3	4'-0"	144
A207	4	#5	STR	26'-9"	112	S3	216	#4	9	2'-8"	385
A208	4	#5	STR	25'-0"	104	S4	81	#4	4	7'-3"	392
A209	4	#5	STR	23'-3"	97						
A210	4	#5	STR	21'-7"	90	*U1	12	#4	10	13'-9"	110
A211	4	#5	STR	19'-10"	83	*U2	42	#4	10	15'-1"	423
A212	4	#5	STR	18'-1"	75						

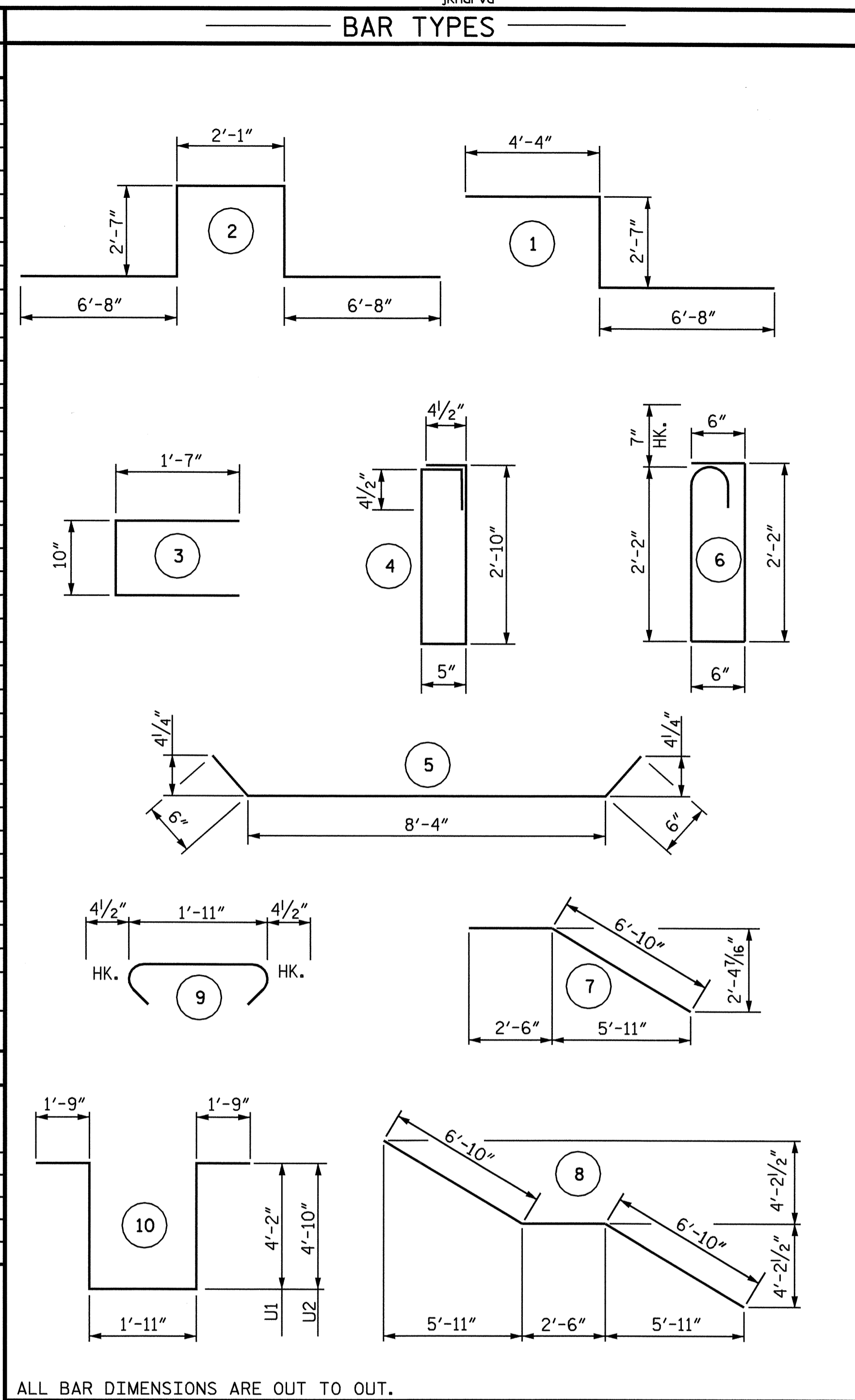
REINFORCING STEEL = 31518 LBS.

* EPOXY COATED REINF. STEEL = 30987 LBS.

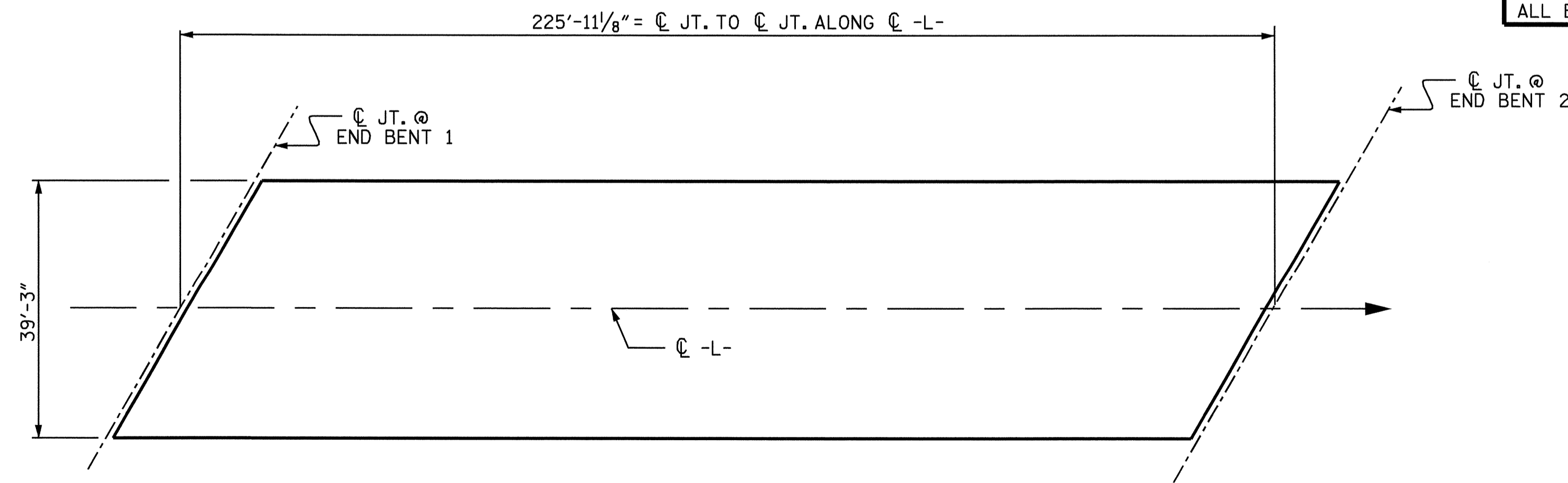
—SUPERSTRUCTURE BILL OF MATERIAL—

	CLASS AA CONCRETE			REINFORCING STEEL (LBS.)	EPOXY COATED REINFORCING STEEL (LBS.)
	(CU. YDS.)	(POUR #1)	(POUR #2)		
SPANS A,B, & C	91.8	116.4	132.7	31518	30987
TOTAL **	340.9			31518	30987

** QUANTITIES FOR BARRIER RAIL ARE NOT INCLUDED



ALL BAR DIMENSIONS ARE OUT TO OUT.



LAYOUT FOR COMPUTING AREA OF REINFORCED CONCRETE DECK SLAB
(8864.0 SQ.FT.)

PROJECT NO. B-4096
DAVIDSON COUNTY
STATION: 20+38.40 -L-

STATE OF NORTH CAROLINA
DEPARTMENT OF TRANSPORTATION
RALEIGH
SUPERSTRUCTURE BILL OF MATERIAL



REVISIONS				SHEET NO.	
NO.	BY:	DATE:	NO.	BY:	DATE:
1			3		
2			4		

DRAWN BY: J. G. KHARVA DATE: 3-15-04
CHECKED BY: J. D. HAWK DATE: 4-01-04