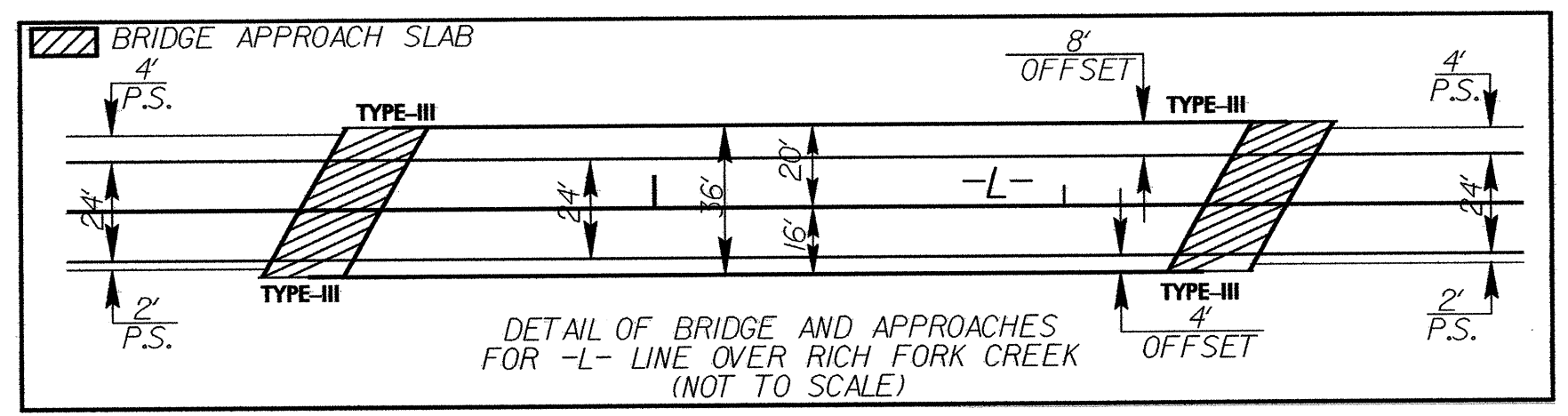


PROJECT REFERENCE NO.	SHEET NO.
B-4096	EC-3/CONST.4
RW SHEET NO.	
ROADWAY DESIGN ENGINEER	HYDRAULICS ENGINEER

SEE SHEETS 4-A & 4-B FOR DETOUR
SEE SHEET 5 FOR PROFILE

NOTE:
PLACE TEMPORARY ROCK SEDIMENT DAMS TYPE-B AND TEMPORARY ROCK SILT CHECKS TYPE-A AT DRAINAGE OUTLETS.

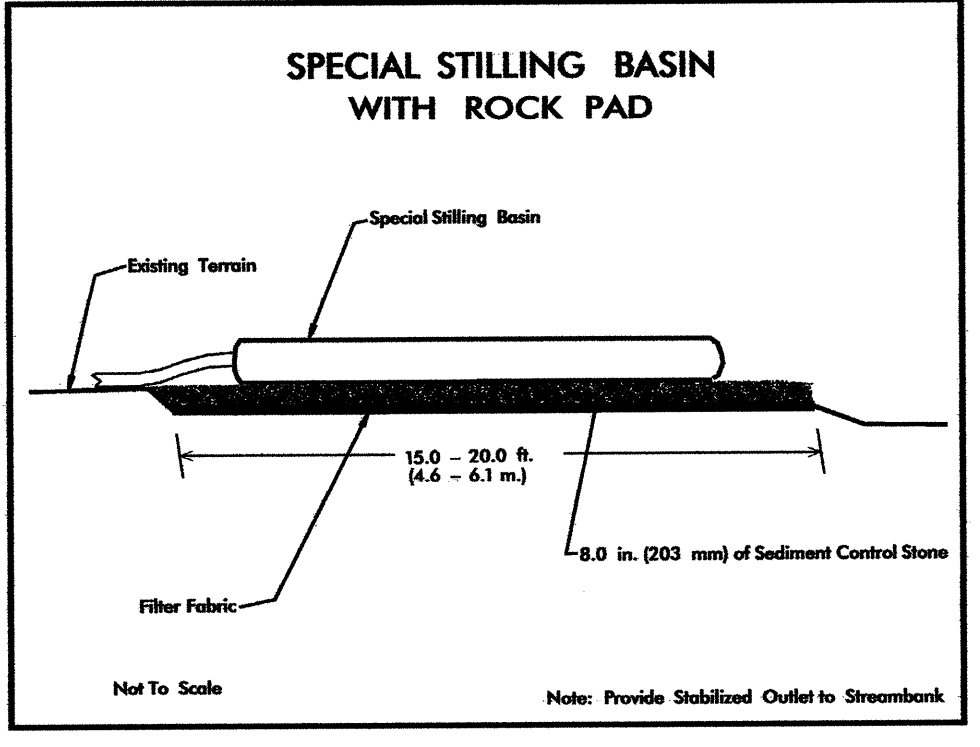
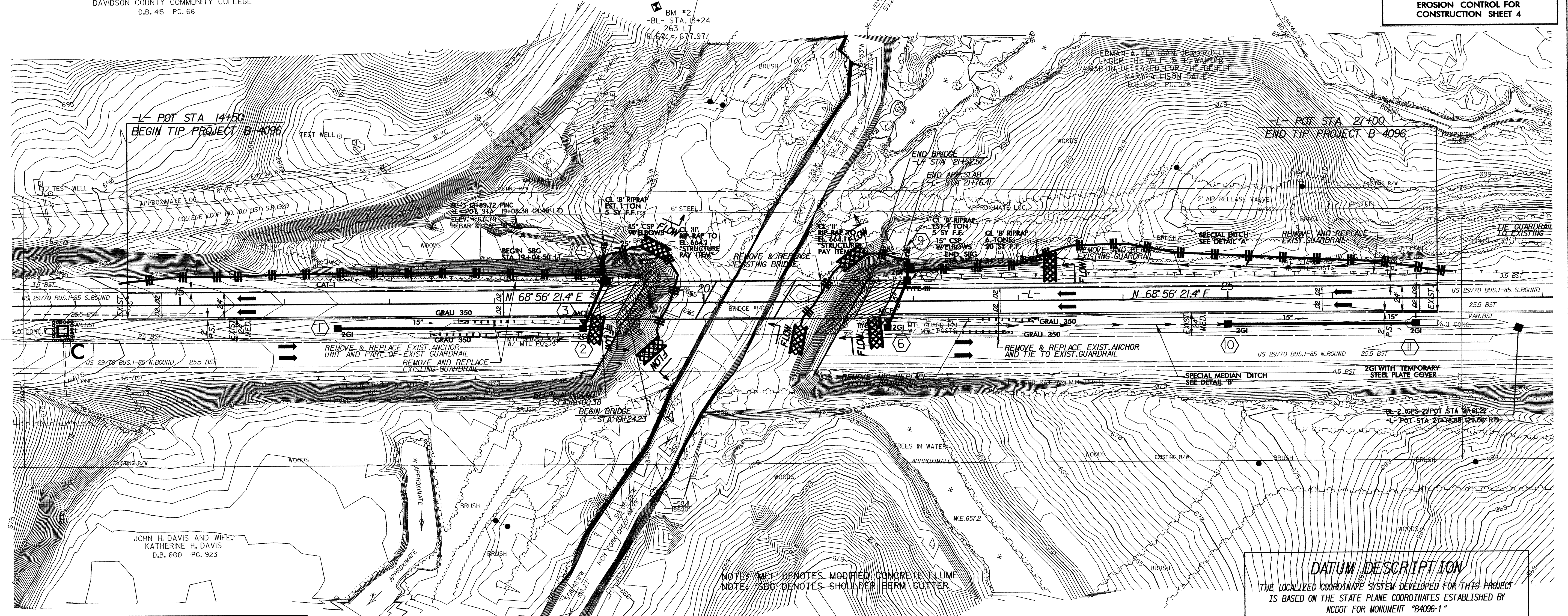
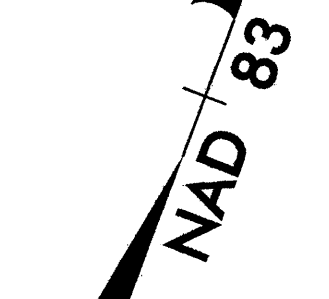
CLEARING AND GRUBBING EROSION CONTROL FOR CONSTRUCTION SHEET 4



NOTE: THERE IS CONCRETE PAVEMENT LAYER UNDER THE EXISTING ASPHALT PAVEMENT. PAVEMENT REMOVAL FOR BOTH THE ASPHALT AND THE CONCRETE PAVEMENT WILL BE PAID FOR AT CONTRACT LUMP SUM PRICE FOR GRADING.

DAVIDSON COUNTY COMMUNITY COLLEGE
D.B. 415 PG. 66

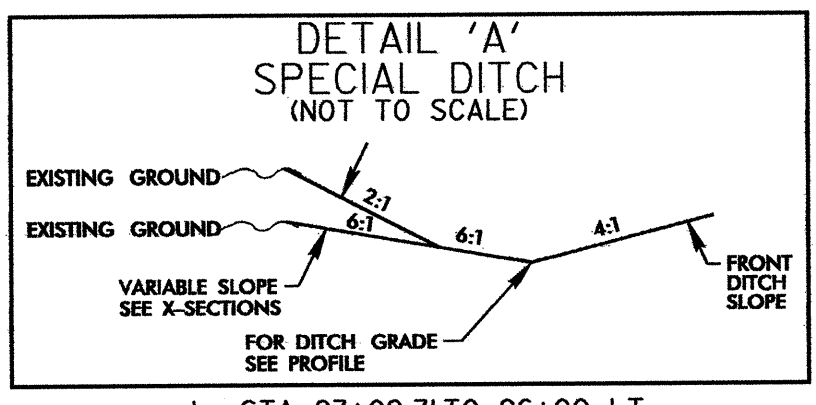
JOHN H. DAVIS AND WIFE,
KATHERINE H. DAVIS
D.B. 600 PG. 923



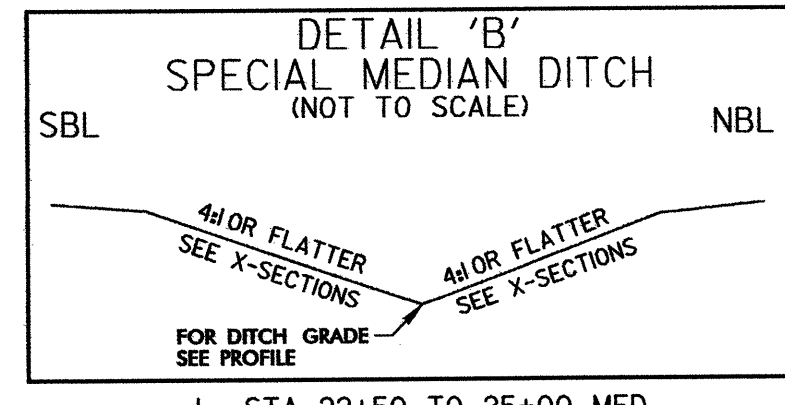
NOTE:
UTILIZE TEMPORARY SPECIAL STILLING BASINS AS STILLING BASIN WHERE APPLICABLE.

NOTE: MCF DENOTES MODIFIED CONCRETE FLUME
NOTE: SBG DENOTES SHOULDER BERM GUTTER

TALMADGE RUSSELL HINKLE FISHER AND EDGAR BRUCE HINKLE, JR.,
DB.598 PG.304



-L- STA. 23+02.31 TO 26+00 LT



-L- STA. 22+50 TO 25+00 MED

DATUM DESCRIPTION
THE LOCALIZED COORDINATE SYSTEM DEVELOPED FOR THIS PROJECT IS BASED ON THE STATE PLANE COORDINATES ESTABLISHED BY NCDOT FOR MONUMENT "B4096-1" WITH NAD 83 STATE PLANE GRID COORDINATES OF NORTHING: 771622988(ft) EASTING: 1650577230(ft) THE AVERAGE COMBINED GRID FACTOR USED ON THIS PROJECT (GROUND TO GRID) IS: 0.99990194 THE N.C. LAMBERT GRID BEARING AND LOCALIZED HORIZONTAL GROUND DISTANCE FROM "B4096-1" TO -L- STATION 14+50 IS N 64°58'31.50" E 332.10 FT. ALL LINEAR DIMENSIONS ARE LOCALIZED HORIZONTAL DISTANCES VERTICAL DATUM USED IS NGVD 29