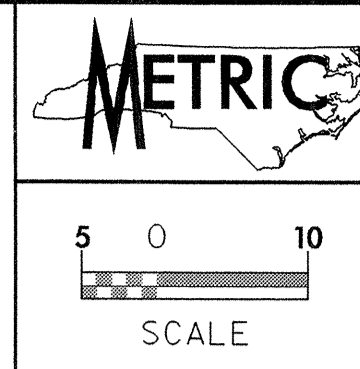


04297

COUNTY OF CUMBERLAND
DB 4732 PG 281
DB 4609 PG 420
DB 4628 PG 828

COUNTY OF CUMBERLAND
DB 4250 PG 199

STATE OF NORTH CAROLINA
DB 3660 PG 859

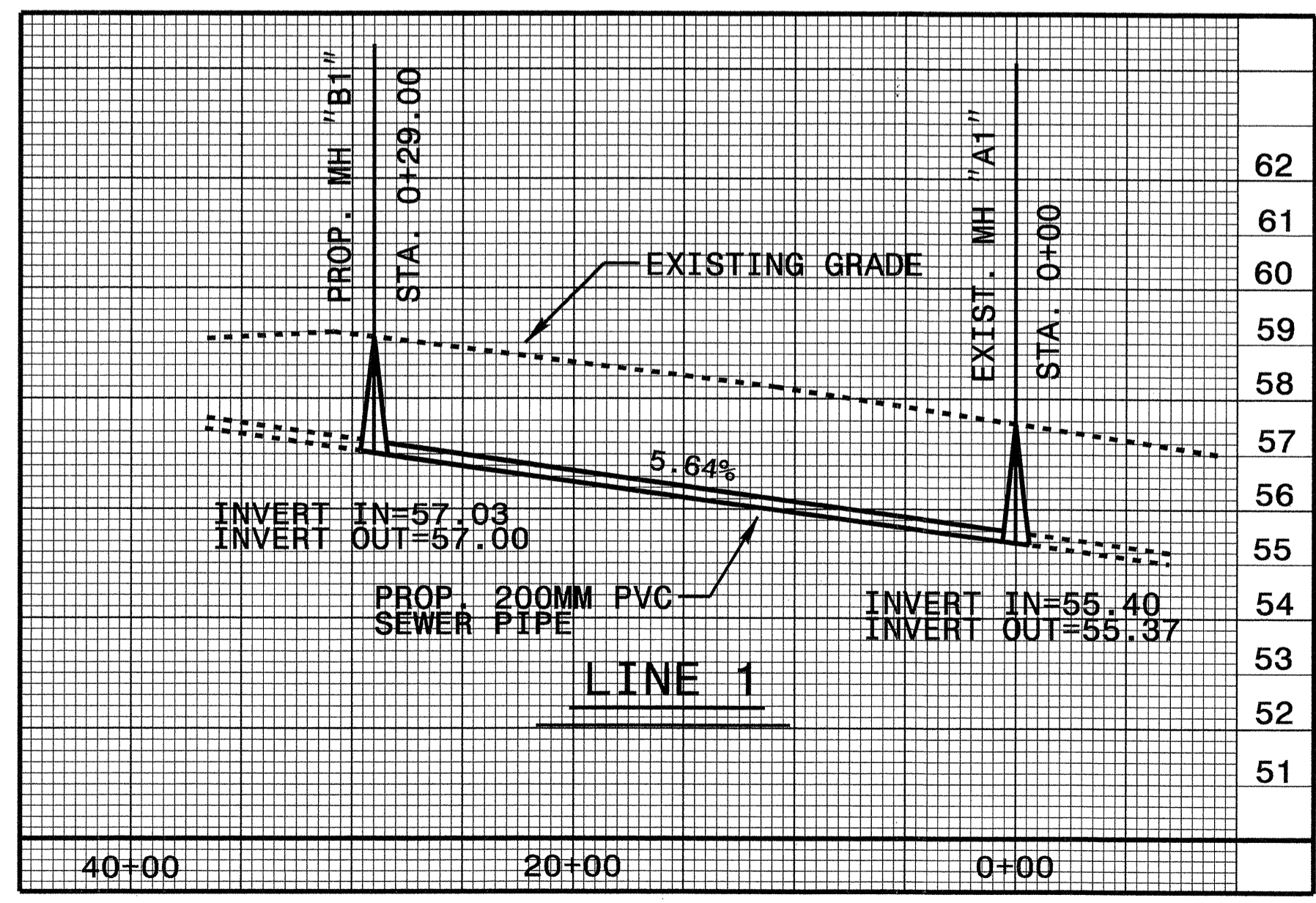
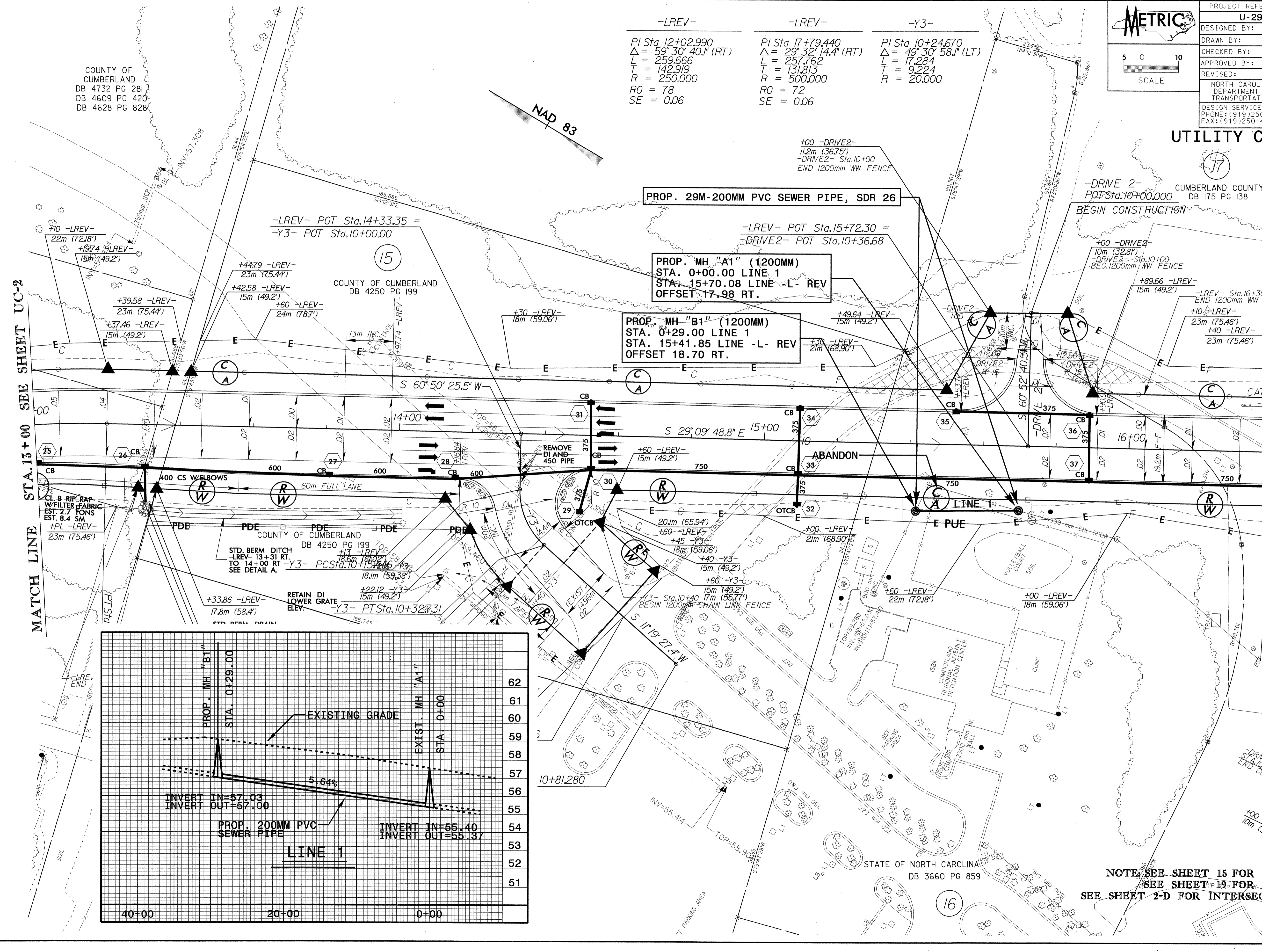


PROJECT REFERENCE NO.	U-2912	SHEET NO.	UC-3
DESIGNED BY:	CSG		
DRAWN BY:	CSG		
CHECKED BY:	MRB		
APPROVED BY:	RBW		
REVISER:		NORTH CAROLINA DEPARTMENT OF TRANSPORTATION DESIGN SERVICES UNIT PHONE: (919) 250-4128 FAX: (919) 250-4119	
UTILITY CONSTRUCTION			

-LREV-	-LREV-	-Y3-
PI Sta 12+02.990 Δ = 59° 30' 40.1" (RT) L = 259.666 T = 142.919 R = 250.000 RO = 78 SE = 0.06	PI Sta 17+79.440 Δ = 29° 32' 14.4" (RT) L = 257.762 T = 131.813 R = 500.000 RO = 72 SE = 0.06	PI Sta 10+24.670 Δ = 49° 30' 58.1" (LT) L = 17.284 T = 9.224 R = 20.000

MATCH LINE STA. 13+00 SEE SHEET UC-2

MATCH LINE STA. 16+40 SEE SHEET UC-4



NOTE: SEE SHEET 15 FOR -L- PROFILE
SEE SHEET 19 FOR -Y3- PROFILE
SEE SHEET 2-D FOR INTERSECTION DETAILS

16-SEP-2004 10:01
c:\u2912s6uc3.pch
spc30311.dwg