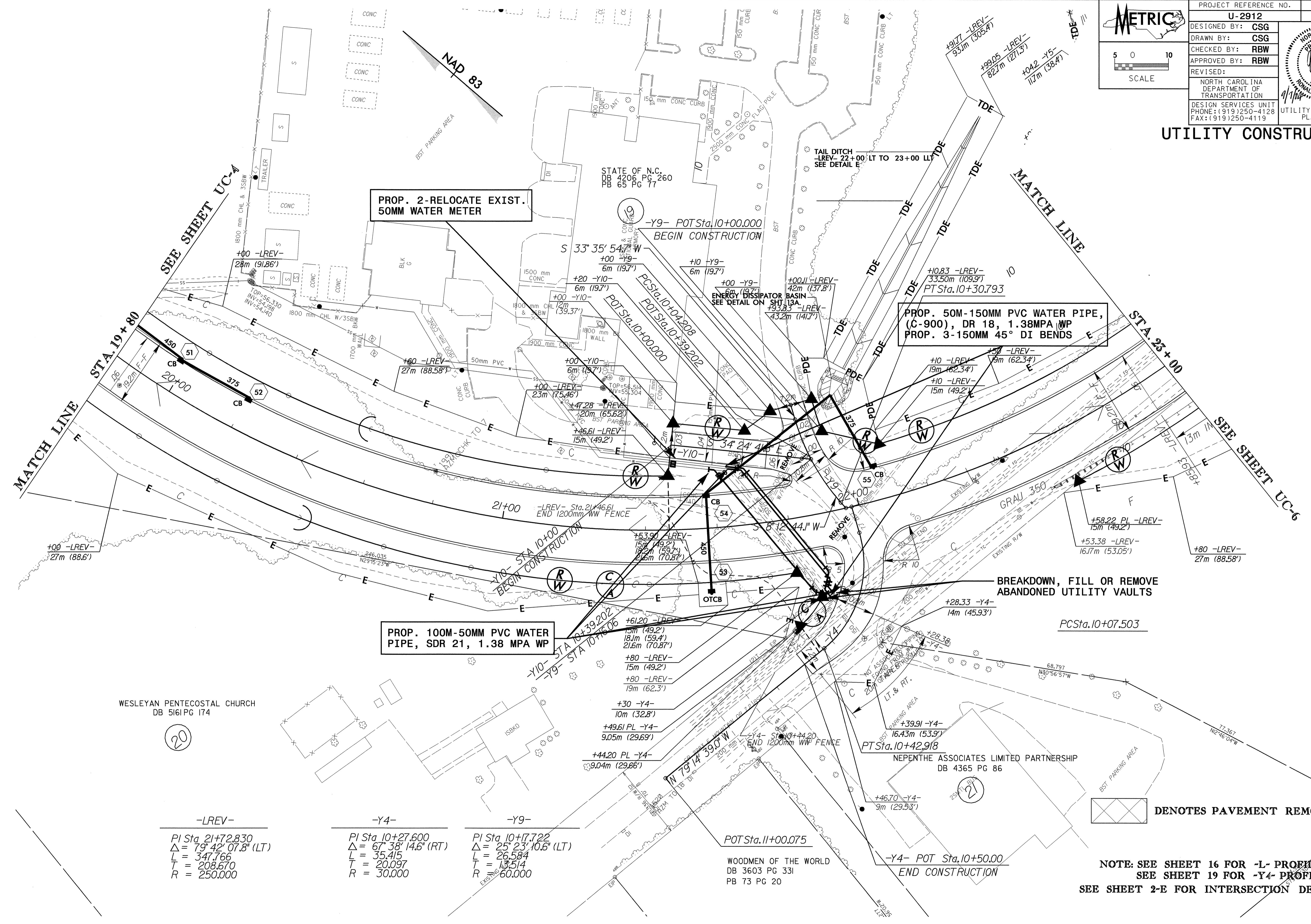


PROJECT REFERENCE NO.	U-2912	SHEET NO.	UC-5
DESIGNED BY:	CSG		
DRAWN BY:	CSG		
CHECKED BY:	RBW		
APPROVED BY:	RBW		
REVISED:			
NORTH CAROLINA DEPARTMENT OF TRANSPORTATION		UTILITY CONSTRUCTION PLANS ONLY	
DESIGN SERVICES UNIT PHONE: (919)250-4128 FAX: (919)250-4119			

UTILITY CONSTRUCTION



REVISIONS

-LREV-	-Y4-	-Y9-
PI Sta. 21+72.830	PI Sta. 10+27.600	PI Sta. 10+17.722
$\Delta = 79^\circ 42' 07.8''$ (LT)	$\Delta = 67^\circ 38' 14.6''$ (RT)	$\Delta = 25^\circ 23' 10.6''$ (LT)
L = 347.766	L = 35.415	L = 26.584
T = 208.670	T = 20.097	T = 13.514
R = 250.000	R = 30.000	R = 60.000

DENOTES PAVEMENT REMOVAL

NOTE: SEE SHEET 16 FOR -L- PROFILE
SEE SHEET 19 FOR -Y4- PROFILE
SEE SHEET 2-E FOR INTERSECTION DETAILS

04257
07-SEP-2004 12:23
H:\GIS\112912s8UC5.mxd
C:\Users\jrb\Documents\112912s8UC5.dwg
112912s8UC5.dwg
112912s8UC5.dwg