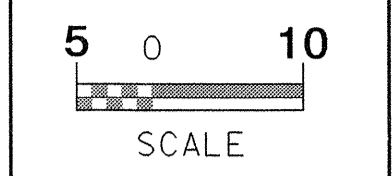


**DATUM DESCRIPTION**

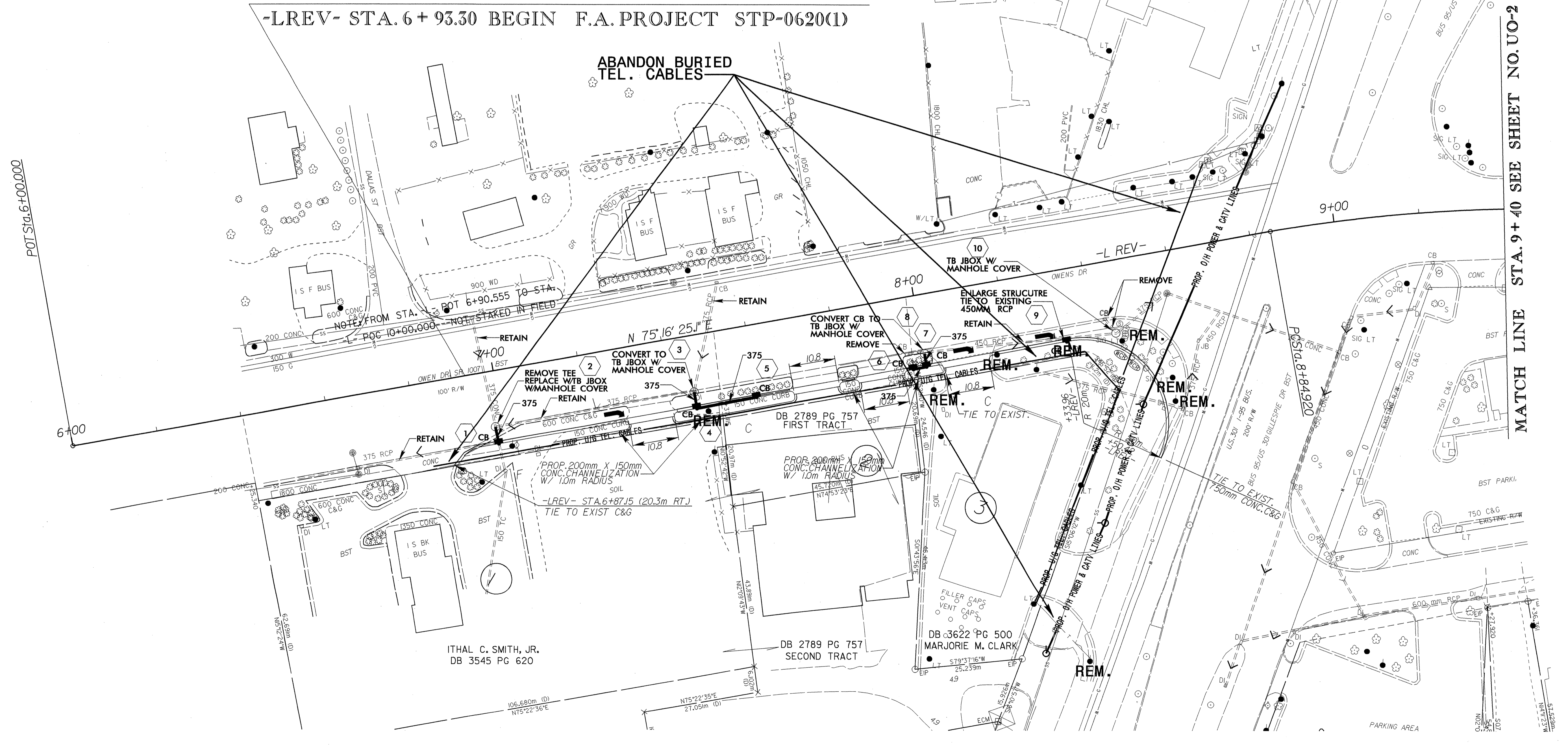
THE LOCALIZED COORDINATE SYSTEM DEVELOPED FOR THIS PROJECT IS BASED ON THE STATE PLANE COORDINATES ESTABLISHED BY NCGS FOR MONUMENT "SEVEN" WITH NAD 83 STATE PLANE GRID COORDINATES OF NORTHING: 138173.482(m) EASTING: 622122.922(m) THE AVERAGE COMBINED GRID FACTOR USED ON THIS PROJECT (GROUND TO GRID) IS: 0.99988431 THE N.C. LAMBERT GRID BEARING AND LOCALIZED HORIZONTAL GROUND DISTANCE FROM "SEVEN" TO -LREV- STATION 6+00.00 IS N 50° 57' 12.934" W AT 4216.18m ALL LINEAR DIMENSIONS ARE LOCALIZED HORIZONTAL DISTANCES VERTICAL DATUM USED IS NAVD 88

-LREV-

PI Sta 9+34.270  
 $\Delta = 16^{\circ} 03' 06.1''$  (RT)  
 L = 98.054  
 T = 49.350  
 R = 350.000



-LREV- STA. 6+93.30 BEGIN STATE PROJECT 8.2441101  
 -LREV- STA. 6+93.30 BEGIN F.A. PROJECT STP-0620(1)



MATCH LINE STA. 9+40 SEE SHEET NO. UO-2

042557  
 PLOT STA. 6+00.000  
 02-JUL-2004 15:18  
 95-88-01-D  
 1507 1554 1555  
 95-88-01-D  
 1507 1554 1555