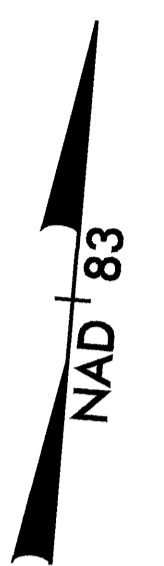


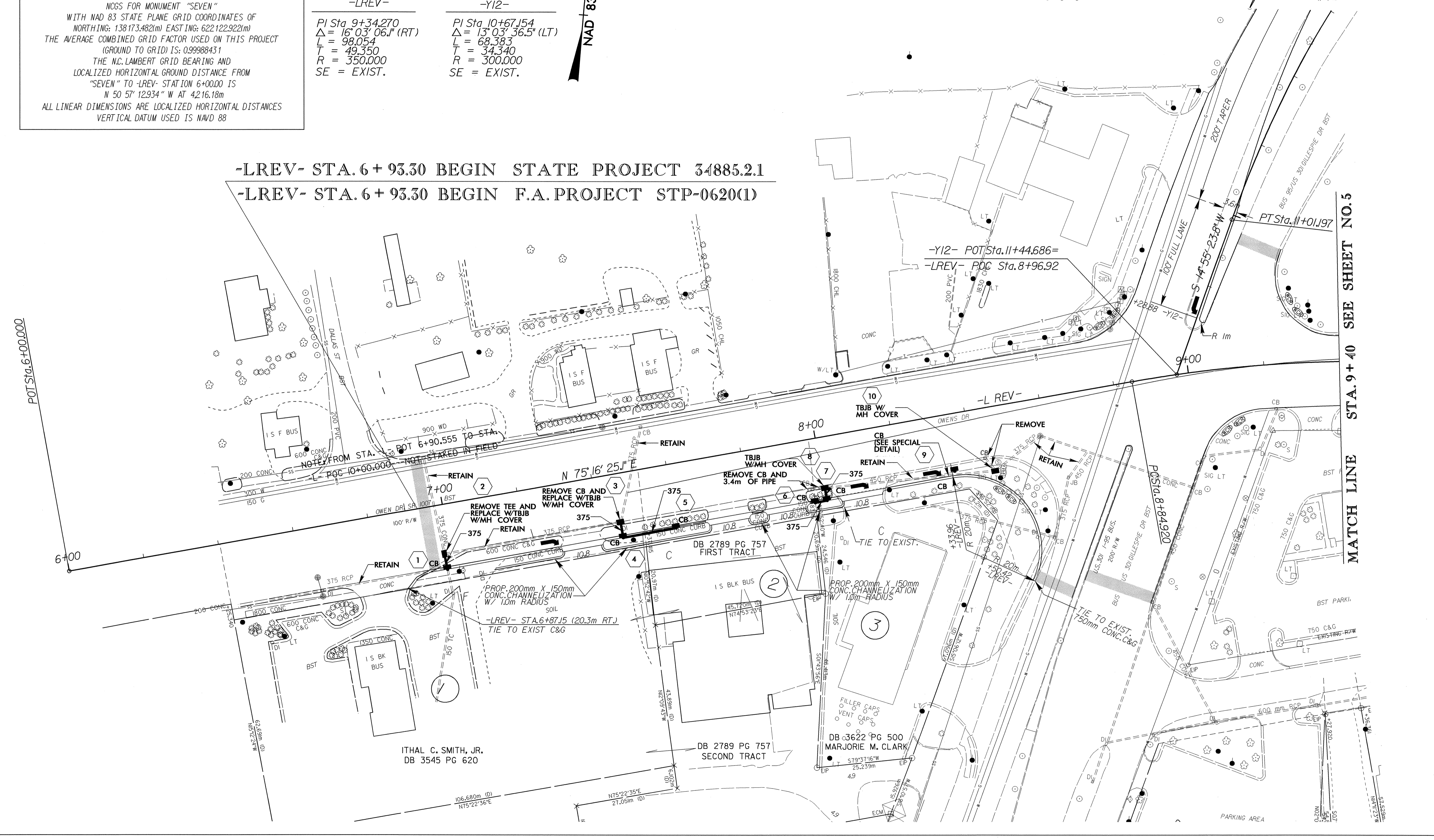
DATUM DESCRIPTION

THE LOCALIZED COORDINATE SYSTEM DEVELOPED FOR THIS PROJECT IS BASED ON THE STATE PLANE COORDINATES ESTABLISHED BY NCSS FOR MONUMENT "SEVEN" WITH NAD 83 STATE PLANE GRID COORDINATES OF NORTHING: 138173.482(m) EASTING: 622122.922(m) THE AVERAGE COMBINED GRID FACTOR USED ON THIS PROJECT (GROUND TO GRID) IS: 0.99988431 THE N.C. LAMBERT GRID BEARING AND LOCALIZED HORIZONTAL GROUND DISTANCE FROM "SEVEN" TO -LREV- STATION 6+00.00 IS N 50° 57' 12.934" W AT 4216.18m ALL LINEAR DIMENSIONS ARE LOCALIZED HORIZONTAL DISTANCES VERTICAL DATUM USED IS NAVD 88

-LREV-	-Y12-
PI Sta. 9+34.270	PI Sta. 10+67.154
$\Delta = 16^{\circ} 03' 06.1" (RT)$	$\Delta = 13^{\circ} 03' 36.5" (LT)$
L = 98.054	L = 68.383
T = 49.350	T = 34.340
R = 350.000	R = 300.000
SE = EXIST.	SE = EXIST.



-LREV- STA. 6+93.30 BEGIN STATE PROJECT 34885.2.1
 -LREV- STA. 6+93.30 BEGIN F.A. PROJECT STP-0620(1)



REVISIONS

MATCH LINE STA. 9+40 SEE SHEET NO. 5

01 SEP 04 03:35
 R/W REV. AT RD 040034
 01 SEP 04 03:35
 R/W REV. AT RD 040034