

5/09/04

RD203024

RD203024

RD203024

RD203024

RD203024

RD203024

RD203024

RD203024

RD203024

RD203024

RD203024

RD203024

RD203024

RD203024

RD203024

RD203024

RD203024

RD203024

RD203024

RD203024

RD203024

RD203024

RD203024

RD203024

RD203024

RD203024

RD203024

RD203024

RD203024

RD203024

RD203024

PIPE HYDRAULIC DATA	
DRAINAGE STRUCTURE NO.90	
DRAINAGE AREA	= 3.3 HA
DESIGN FREQUENCY	= 50 YRS
DESIGN DISCHARGE	= 0.74 CMS
DESIGN HW ELEVATION	= 26.84 M
100-YEAR DISCHARGE	= 0.80 CMS
100-YEAR HW ELEVATION	= 26.88 M
OVERTOPPING FREQUENCY	= 500 YRS
OVERTOPPING DISCHARGE	= 1.60 CMS
OVERTOPPING ELEVATION	= 21.50 M

PROJECT REFERENCE NO. U-2912  
ROADWAY DESIGN ENGINEER

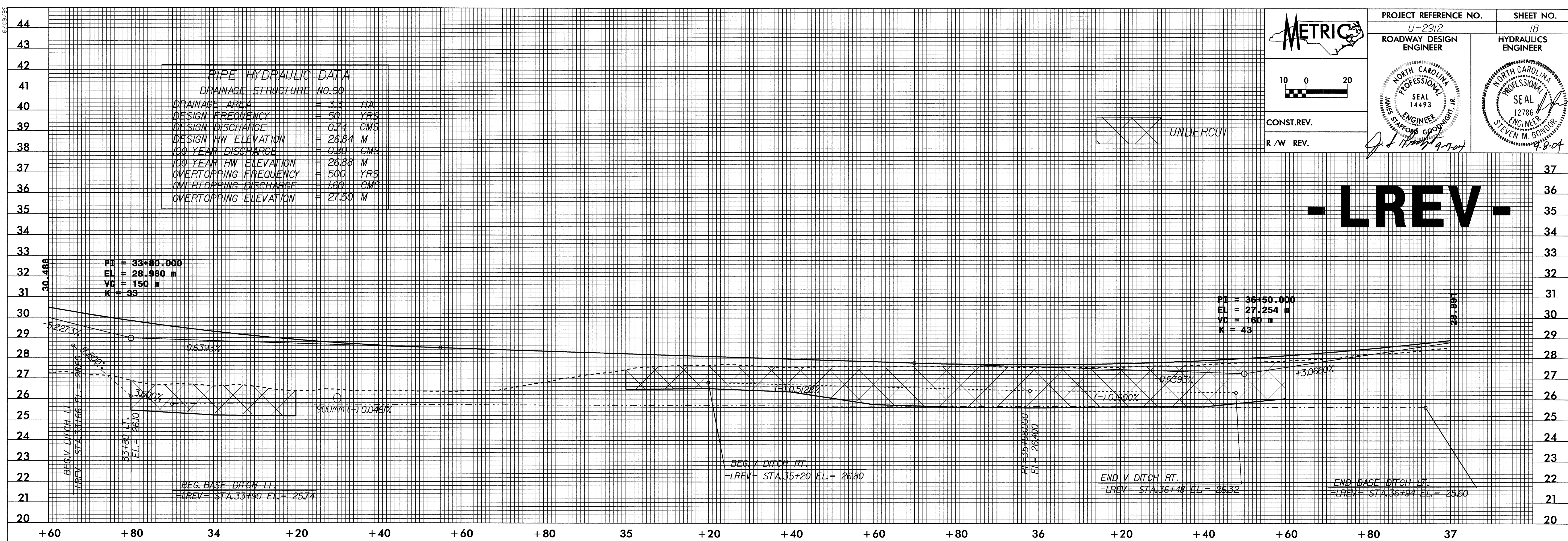
SHEET NO. 18  
HYDRAULICS ENGINEER

10 0 20

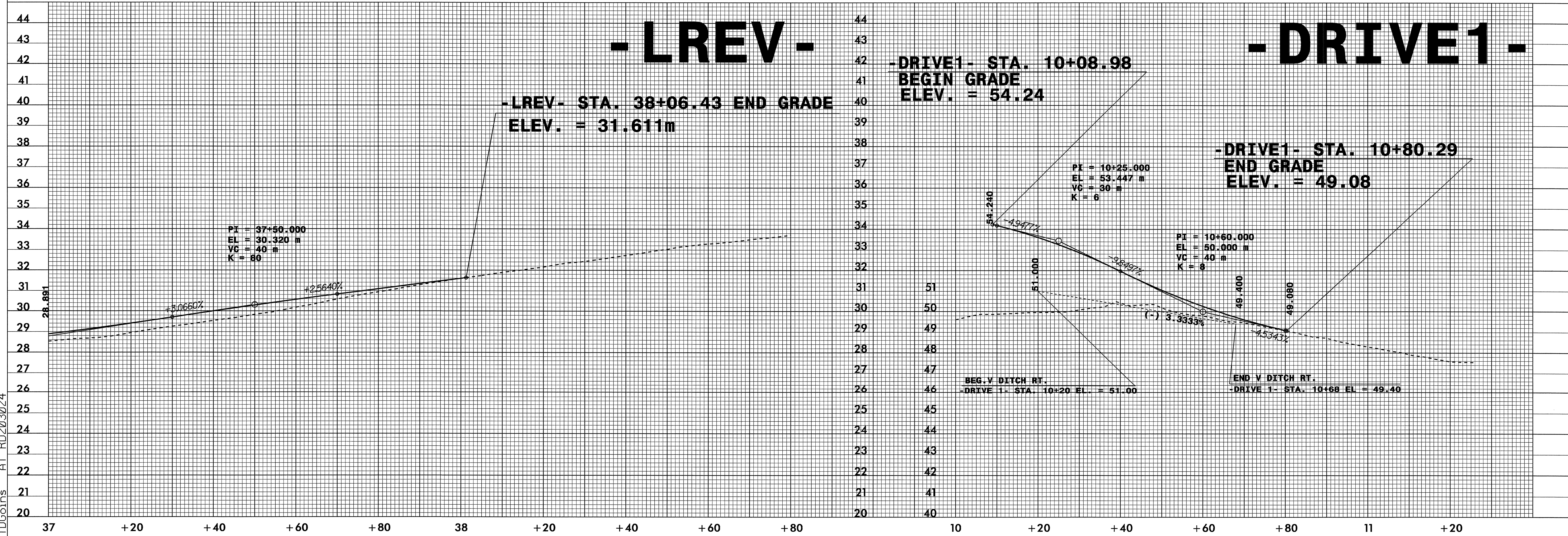
CONST. REV.  
R / W REV.

SEAL 14493  
NORTH CAROLINA PROFESSIONAL ENGINEER  
J. STAFFORD GOODRIGHT

SEAL 12786  
NORTH CAROLINA PROFESSIONAL ENGINEER  
STEVEN M. BONDOR



-LREV-



-LREV-

-DRIVE1-

03-SEP-2004 11:58  
D:\proj\02\rd203024\TDgoins