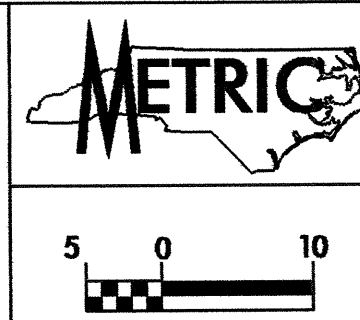
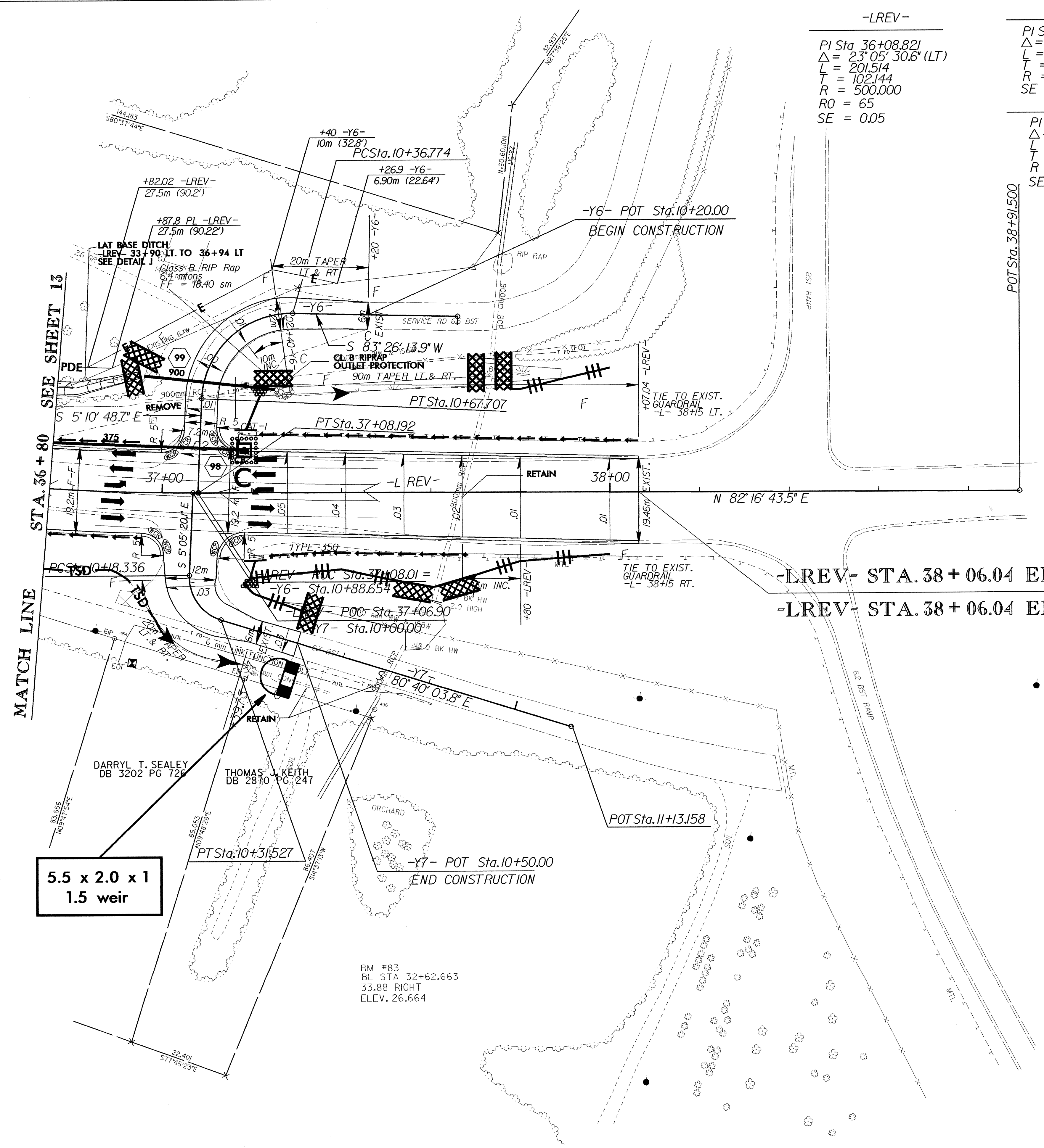


PROJECT REFERENCE NO.	SHEET NO.
U-2912	EC-24/CONST.13
R/W SHEET NO.	
ROADWAY DESIGN ENGINEER	HYDRAULICS ENGINEER
CONST. REV.	
R/W REV.	



-LREV-
 PI Sta 36+08.821
 $\Delta = 23^{\circ}05'30.6" (LT)$
 $L = 201.514$
 $T = 102.144$
 $R = 500.000$
 $RO = 65$
 $SE = 0.05$

-Y6-
 PI Sta 10+56.297
 $\Delta = 88^{\circ}37'02.7" (LT)$
 $L = 30.933$
 $T = 19.523$
 $R = 20.000$
 $SE = \text{SEE PLANS}$
 -Y7-
 PI Sta 10+26.090
 $\Delta = 75^{\circ}34'43.7" (LT)$
 $L = 13.191$
 $T = 7.754$
 $R = 10.000$
 $SE = \text{SEE PLANS}$



5.5 x 2.0 x 1
1.5 weir

BM #83
 BL STA 32+62.663
 33.88 RIGHT
 ELEV. 26.664

DENOTES PAVEMENT REMOVAL

NOTE: SEE SHEET 18 FOR -LREV- PROFILE
 SEE SHEET 20 FOR -Y6- PROFILE
 SEE SHEET 20 FOR -Y7- PROFILE
 SEE SHEET 2-F FOR INTERSECTION DETAILS