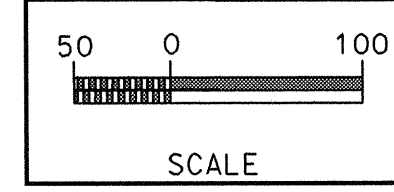
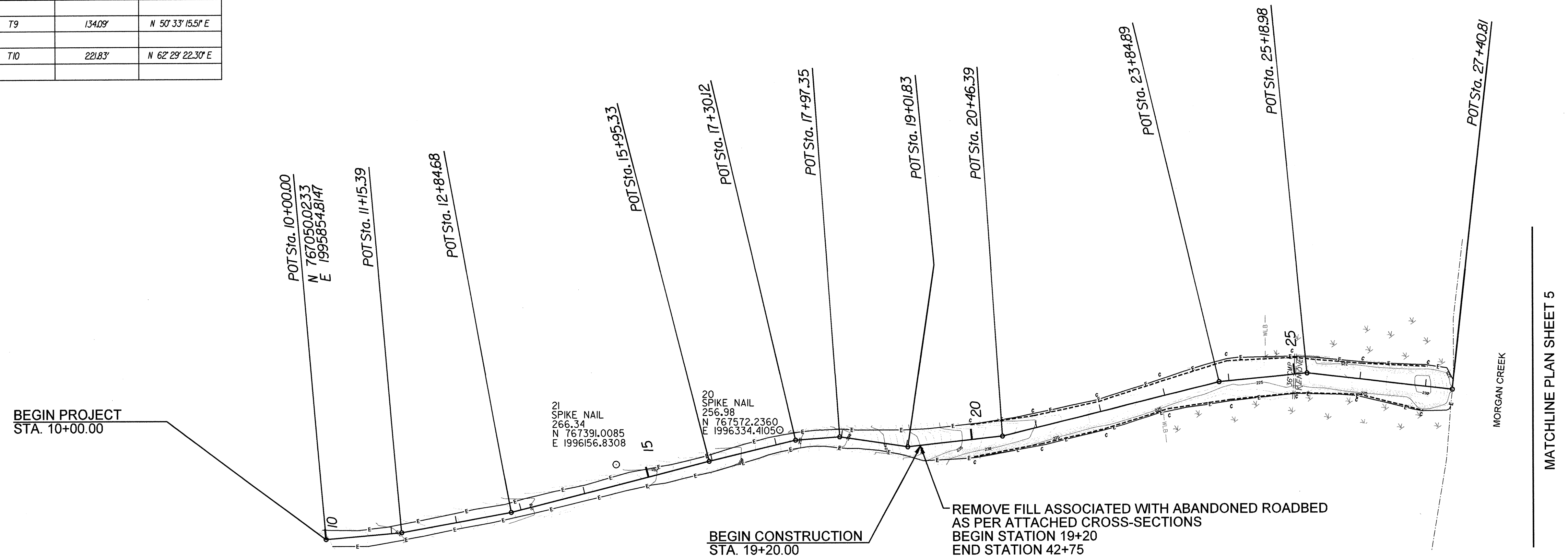


Stantec
 Stantec Consulting Services Inc.
 Suite 300, 801 Jones Franklin Road
 Raleigh, NC
 27606
 Tel. 919.851.6866
 Fax. 919.851.7024
 www.stantec.com



STATION	TANGENT NUMBER	TANGENT LENGTH	BEARING
WEST			
10+00.00			
	T1	115.39'	N 51° 03' 16.38" E
11+15.39			
	T2	169.29'	N 45° 31' 57.67" E
12+84.68			
	T3	310.65'	N 41° 31' 38.36" E
15+95.33			
	T4	134.80'	N 42° 43' 57.98" E
17+30.12			
	T5	67.22'	N 51° 58' 07.19" E
17+97.35			
	T6	104.49'	N 64° 32' 58.76" E
19+01.83			
	T7	144.56'	N 49° 49' 33.64" E
20+46.39			
	T8	338.50'	N 42° 25' 56.76" E
23+84.89			
	T9	134.09'	N 50° 33' 15.51" E
25+18.98			
	T10	221.83'	N 62° 29' 22.30" E
27+40.81			

BENCHMARK	BM NUMBER	LENGTH TO STA. 10+00.00	BEARING TO STA. 10+00.00
SPIKE NAIL	21	455.50'	S 41° 31' 55" W
SPIKE NAIL	20	709.05'	S 42° 33' 51.06" W



NOTE:
 ASPHALT PILES NEAR STATION 10+00 AND 55+00
 SHALL BE REMOVED BY CONTRACTOR

WEST