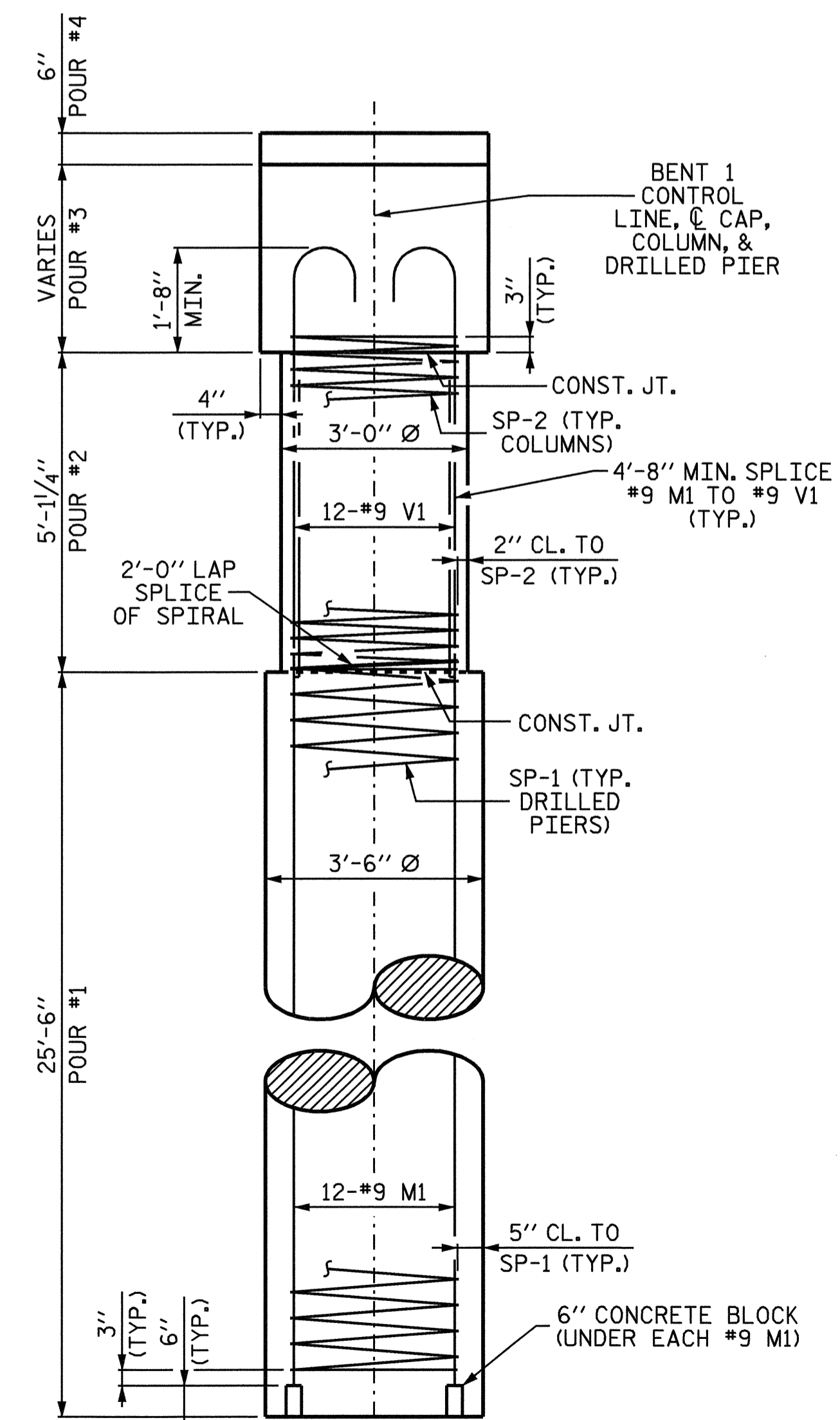


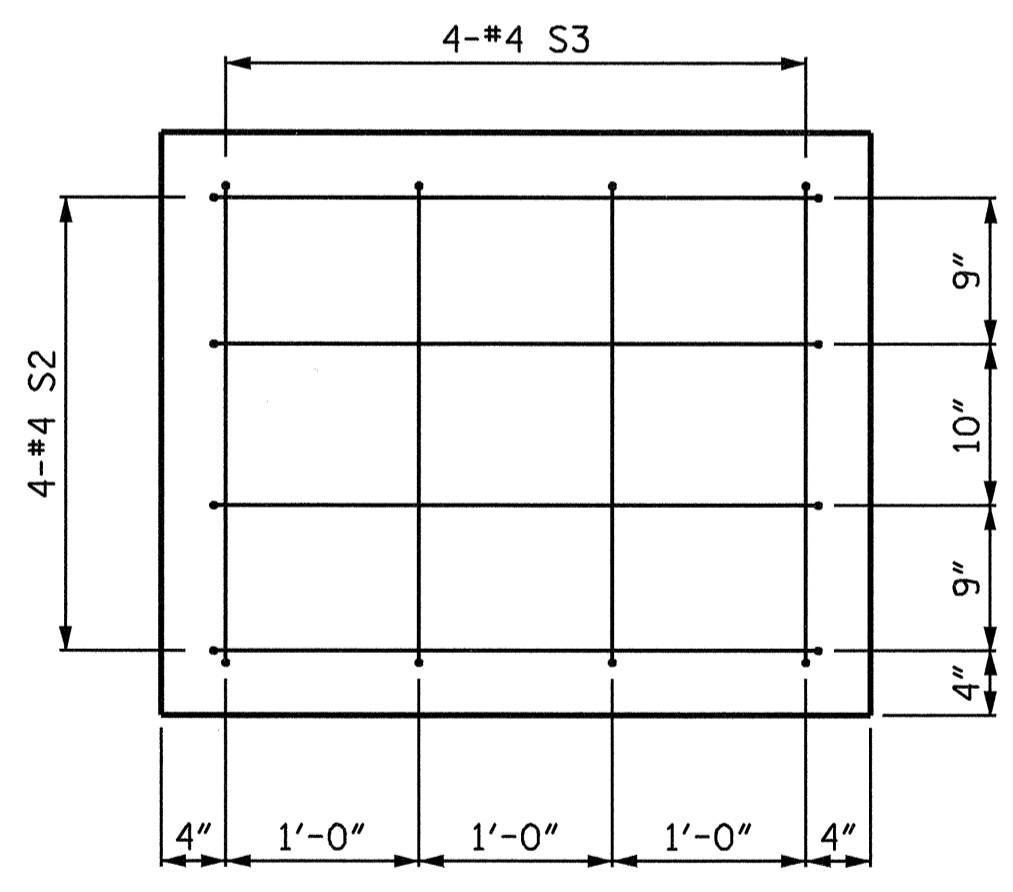
PARTIAL PLAN OF COLUMN
(REINFORCING STEEL AND DIMENSIONS ARE TYPICAL FOR ALL COLUMNS)

PARTIAL PLAN OF DRILLED PIER
(REINFORCING STEEL AND DIMENSIONS ARE TYPICAL FOR ALL DRILLED PIERS)

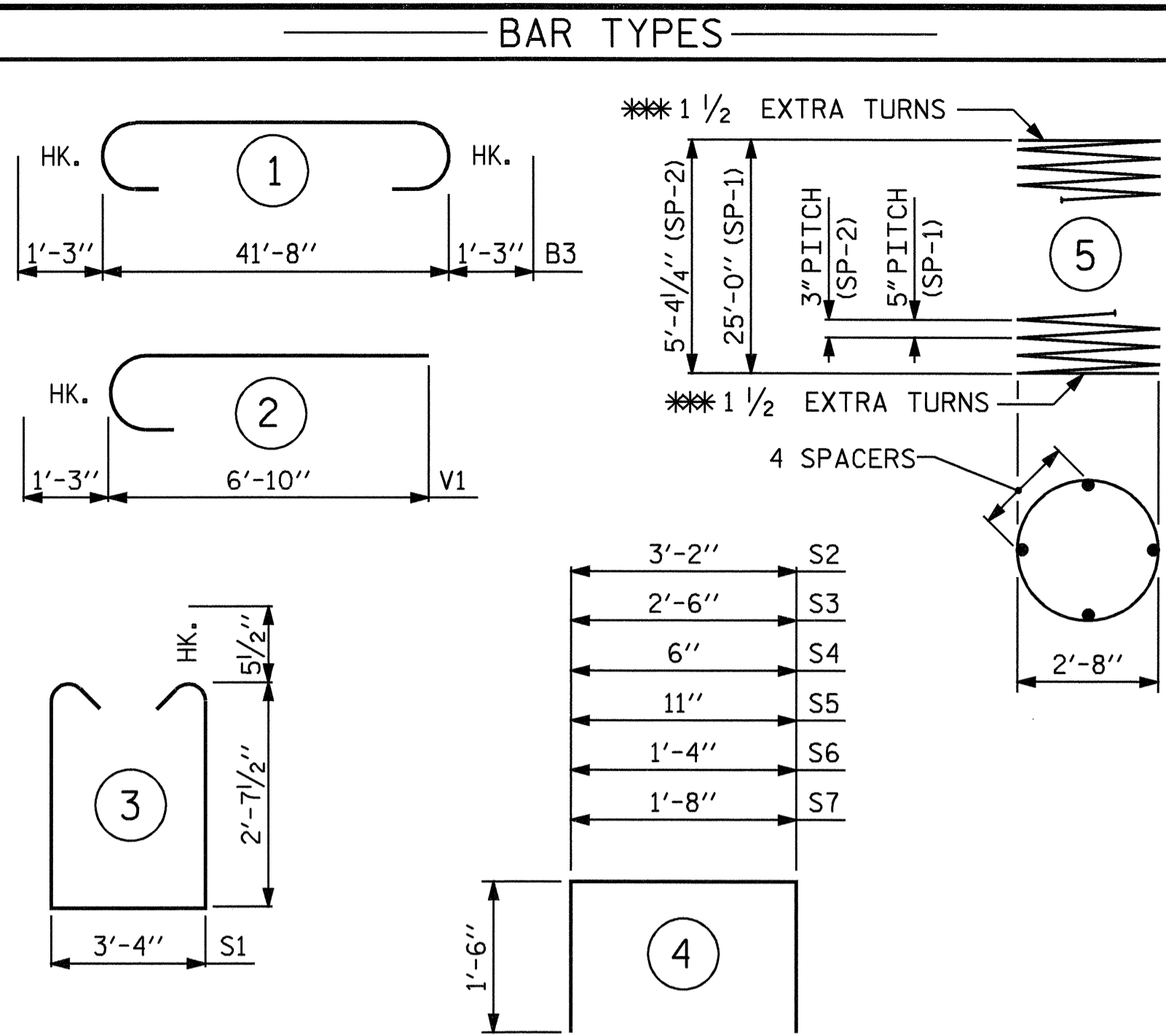
PLAN OF DRILLED PIERS AND COLUMNS



END ELEVATION



END VIEW



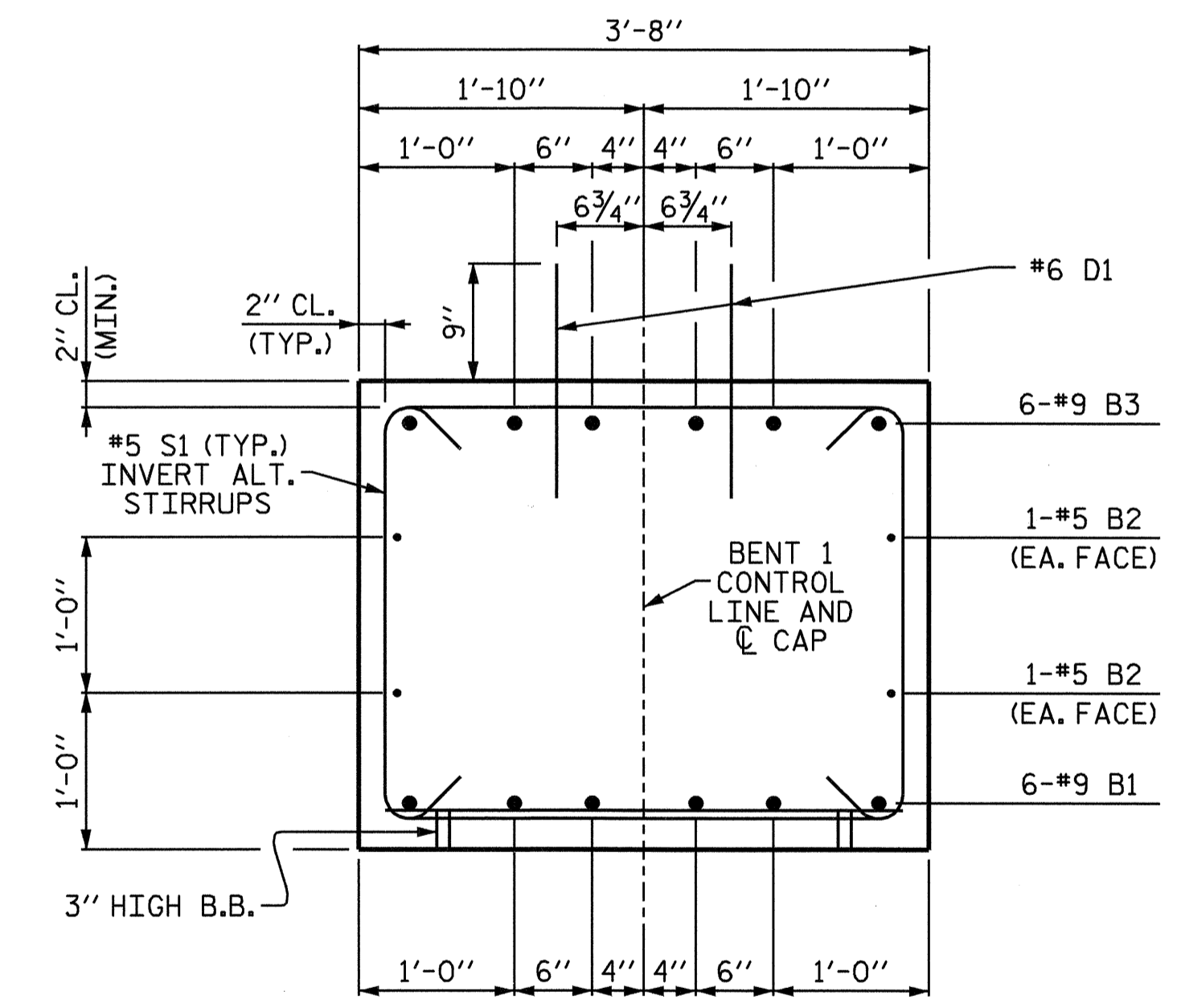
ALL BAR DIMENSIONS ARE OUT TO OUT.

** THE SP-1 SPIRAL REINFORCING STEEL SHALL BE W31 OR D-31 COLD DRAWN WIRE OR #5 PLAIN OR DEFORMED BAR. THE SP-2 SPIRAL REINFORCING STEEL SHALL BE W20 OR D-20 COLD DRAWN WIRE OR #4 PLAIN OR DEFORMED BAR.

** NOT REQUIRED AT CONSTRUCTION JOINT BETWEEN DRILLED PIER AND COLUMN.

BILL OF MATERIAL

BENT 1					
BAR	NO.	SIZE	TYPE	LENGTH	WEIGHT
B1	6	9	STR.	41'-10"	853
B2	4	5	STR.	41'-10"	175
B3	6	9	1	44'-2"	901
B4	2	4	STR.	3'-6"	5
B5	2	4	STR.	3'-4"	4
D1	48	6	STR.	1'-6"	108
M1	36	9	STR.	32'-8"	3998
S1	38	5	3	9'-6"	377
S2	8	4	4	6'-2"	33
S3	8	4	4	5'-6"	29
S4	2	4	4	3'-6"	5
S5	2	4	4	3'-11"	5
S6	2	4	4	4'-4"	6
S7	2	4	4	4'-8"	6
V1	36	9	2	8'-1"	989
REINFORCING STEEL - LBS.					7494
SP-1	3	**	5	517'-2"	1618
SP-2	3	**	5	205'-11"	413
SPIRAL COLUMN REINFORCING STEEL - LBS.					2031
DRILLED PIER CONCRETE POUR #1 - DRILLED PIERS - C.Y.					27.3
CLASS A CONCRETE POUR #2 - COLUMNS - C.Y.					4.0
POUR #3 - CAP - C.Y.					17.3
POUR #4 - LATERAL GUIDE - C.Y.					0.2
TOTAL CLASS A CONCRETE - C.Y.					21.5
3'-6" Ø DRILLED PIER IN SOIL - LIN. FT.					60.5
3'-6" Ø DRILLED PIER NOT IN SOIL - LIN. FT.					16.0
SPT TESTING - EA.					3
CROSSHOLE SONIC LOGGING - EA.					1
CSL TUBES - LIN. FT.					336.0



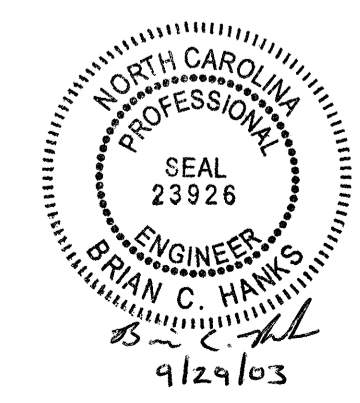
SECTION THRU CAP

PROJECT NO. B-2963
DURHAM COUNTY
STATION: 24+92.50-L-

SHEET 2 OF 2

STATE OF NORTH CAROLINA
DEPARTMENT OF TRANSPORTATION
RALEIGH

SUBSTRUCTURE
BENT 1



REVISIONS				SHEET NO.	
NO.	BY:	DATE:	NO.	BY:	DATE:
1			3		
2			4		

DRAWN BY: William J. Parker DATE: 07/24/02
CHECKED BY: J. KHARVA DATE: 9/19/02

TOTAL SHEETS
32