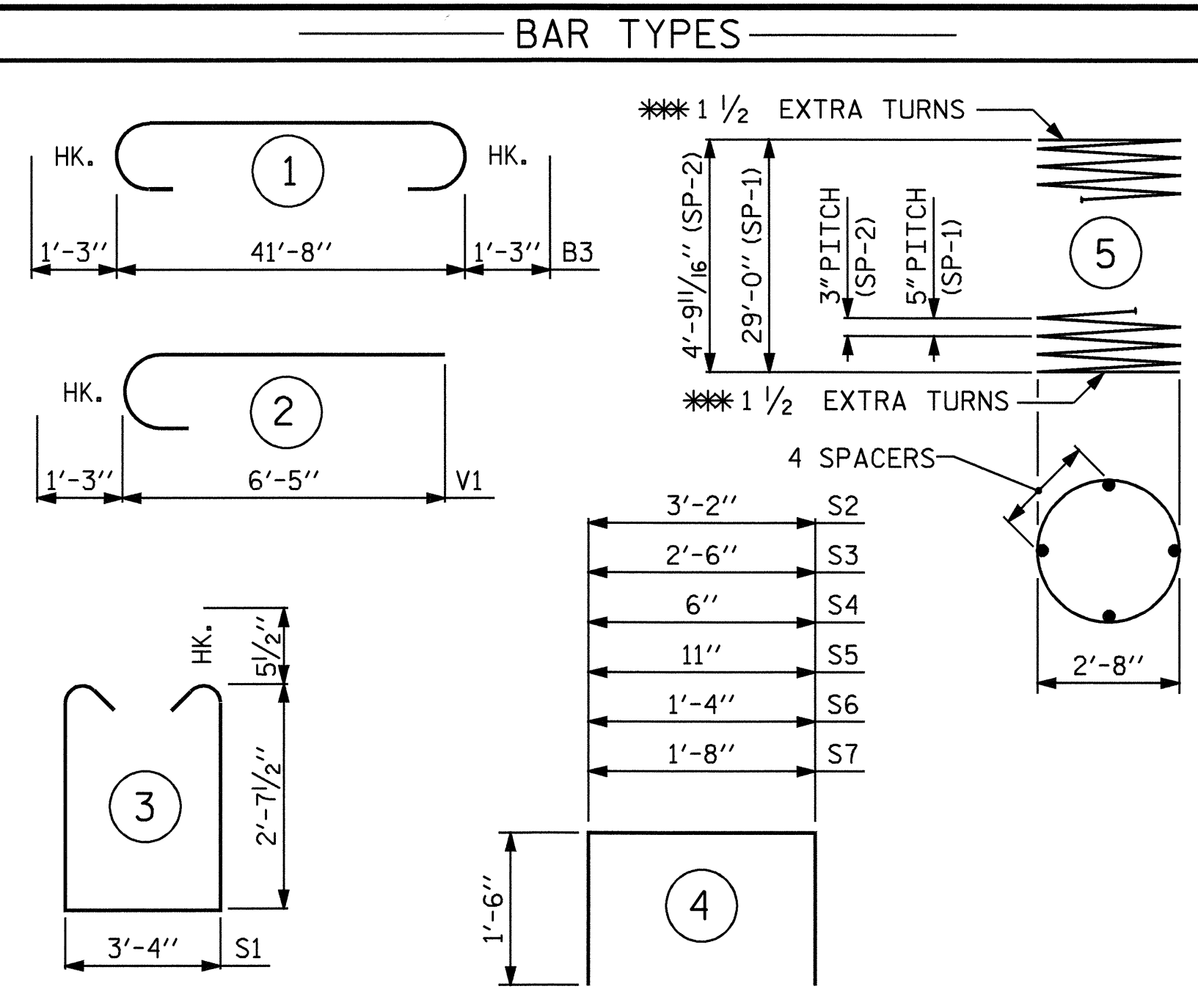
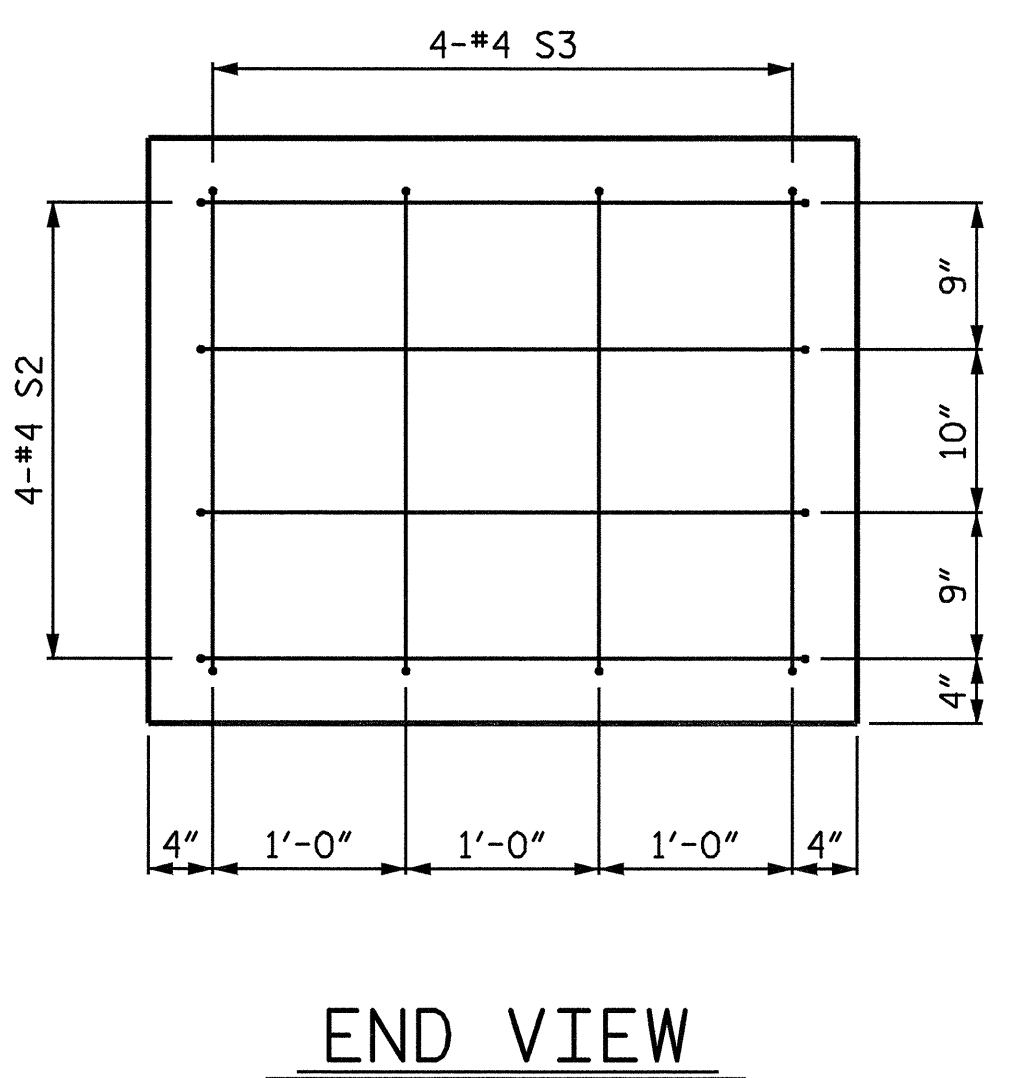
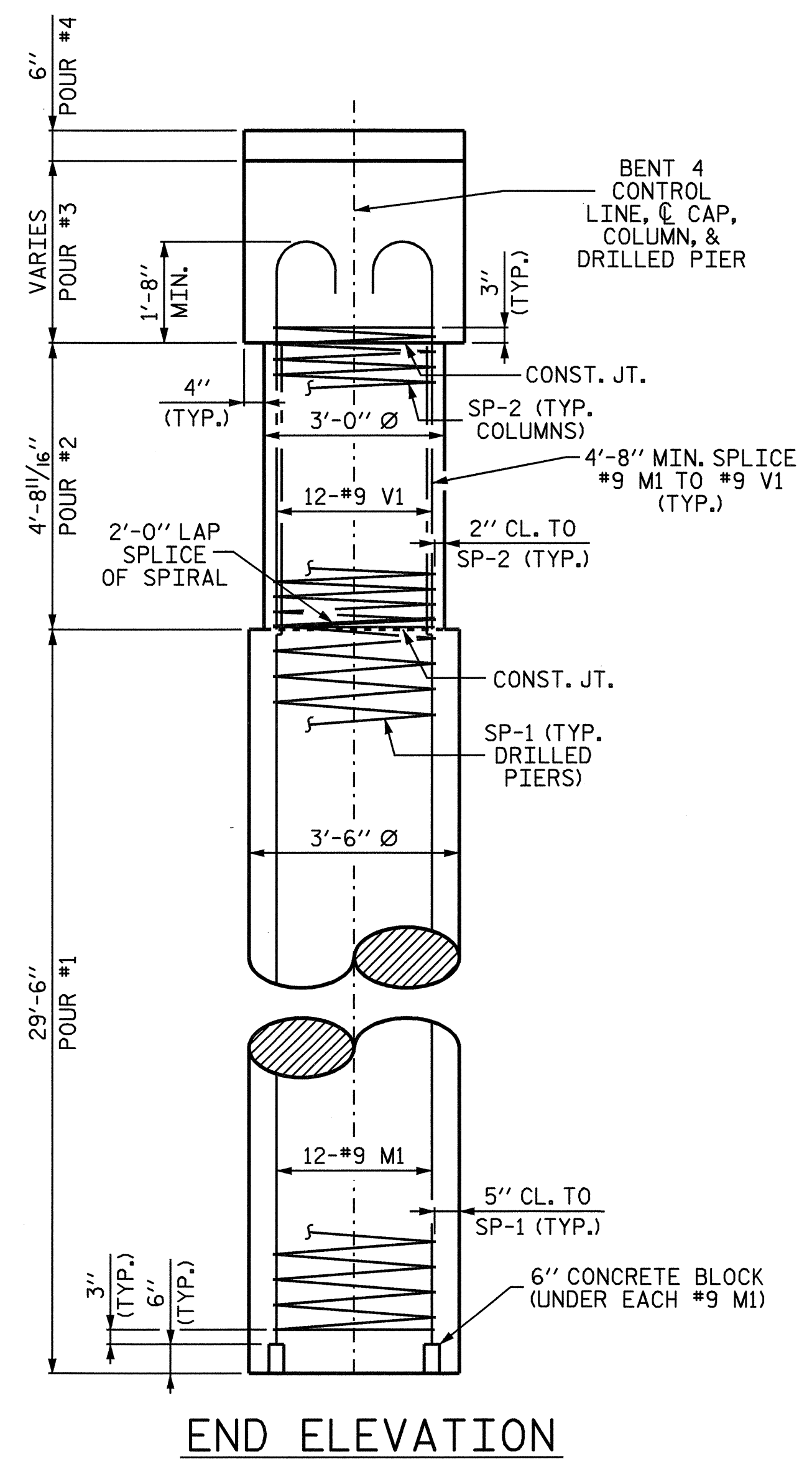


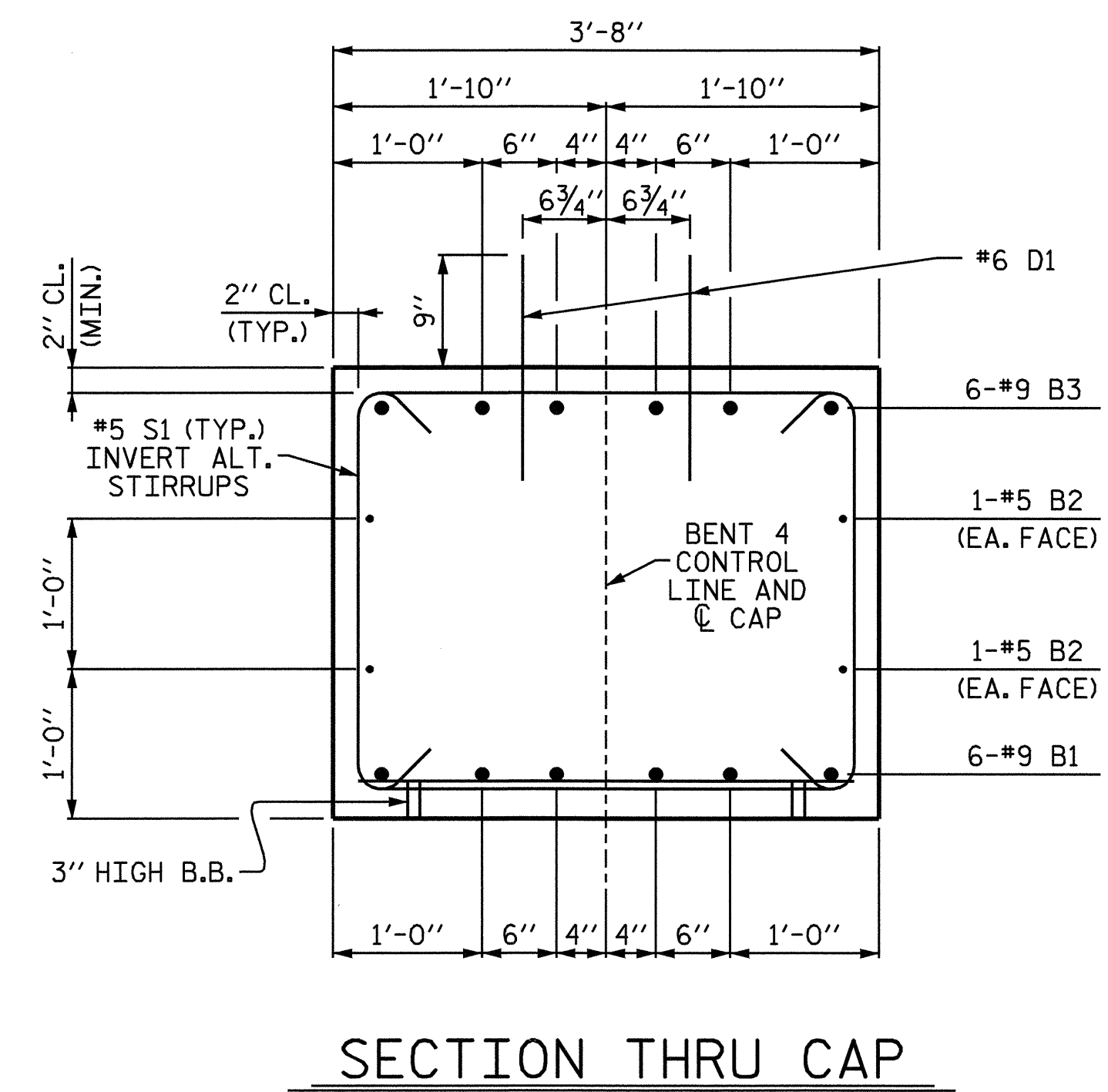
PLAN OF DRILLED PIERS AND COLUMNS



ALL BAR DIMENSIONS ARE OUT TO OUT.

** THE SP-1 SPIRAL REINFORCING STEEL SHALL BE W31 OR D-31 COLD DRAWN WIRE OR #5 PLAIN OR DEFORMED BAR. THE SP-2 SPIRAL REINFORCING STEEL SHALL BE W20 OR D-20 COLD DRAWN WIRE OR #4 PLAIN OR DEFORMED BAR.

*** NOT REQUIRED AT CONSTRUCTION JOINT BETWEEN DRILLED PIER AND COLUMN.



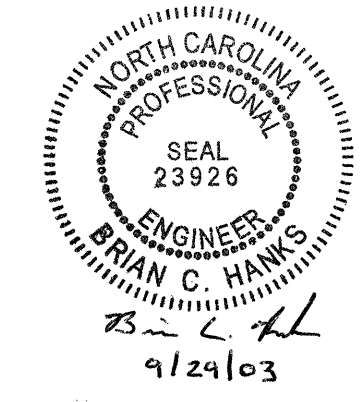
| BILL OF MATERIAL | | | | | | |
|--|-----|------|------|---------|--------|--|
| BENT 4 | | | | | | |
| BAR NO. | NO. | SIZE | TYPE | LENGTH | WEIGHT | |
| B1 | 6 | 9 | STR. | 41'-10" | 853 | |
| B2 | 4 | 5 | STR. | 41'-10" | 175 | |
| B3 | 6 | 9 | 1 | 44'-2" | 901 | |
| B4 | 2 | 4 | STR. | 3'-6" | 5 | |
| B5 | 2 | 4 | STR. | 3'-4" | 4 | |
| D1 | 48 | 6 | STR. | 1'-6" | 108 | |
| M1 | 36 | 9 | STR. | 36'-8" | 4488 | |
| S1 | 38 | 5 | 3 | 9'-6" | 377 | |
| S2 | 8 | 4 | 4 | 6'-2" | 33 | |
| S3 | 8 | 4 | 4 | 5'-6" | 29 | |
| S4 | 2 | 4 | 4 | 3'-6" | 5 | |
| S5 | 2 | 4 | 4 | 3'-11" | 5 | |
| S6 | 2 | 4 | 4 | 4'-4" | 6 | |
| S7 | 2 | 4 | 4 | 4'-8" | 6 | |
| V1 | 36 | 9 | 2 | 7'-8" | 938 | |
| REINFORCING STEEL - LBS. | | | | | 7933 | |
| SP-1 | 3 | ** | 5 | 599'-3" | 1875 | |
| SP-2 | 3 | ** | 5 | 189'-5" | 380 | |
| SPIRAL COLUMN REINFORCING STEEL - LBS. | | | | | 2255 | |
| DRILLED PIER CONCRETE POUR #1 - DRILLED PIERS - C.Y. | | | | | 31.5 | |
| CLASS A CONCRETE POUR #2 - COLUMNS - LBS. | | | | | 3.7 | |
| POUR #3 - CAP - LBS. | | | | | 17.3 | |
| POUR #4 - LATERAL GUIDE - LBS. | | | | | 0.2 | |
| TOTAL CLASS A CONCRETE - C.Y. | | | | | 21.2 | |
| 3'-6" Ø DRILLED PIER IN SOIL - LIN. FT. | | | | | 72.5 | |
| 3'-6" Ø DRILLED PIER NOT IN SOIL - LIN. FT. | | | | | 16.0 | |
| SPT TESTING - EA. | | | | | 3 | |
| CROSSHOLE SONIC LOGGING TUBES - LIN. FT. | | | | | 384.0 | |

PROJECT NO. B-2963
 DURHAM COUNTY
 STATION: 24+92.50-L-

SHEET 2 OF 2

STATE OF NORTH CAROLINA
 DEPARTMENT OF TRANSPORTATION
 RALEIGH

SUBSTRUCTURE
 BENT 4



DRAWN BY: William J. Parker DATE: 07/24/02
 CHECKED BY: J. KHARVA DATE: 9/19/02

| REVISIONS | | | | | | SHEET NO. |
|-----------|-----|-------|-----|-----|-------|--------------|
| NO. | BY: | DATE: | NO. | BY: | DATE: | S-26 |
| 1 | | | 3 | | | TOTAL SHEETS |
| 2 | | | 4 | | | 32 |