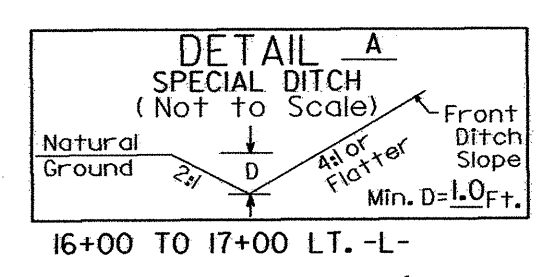


NOTE:
TEMPORARY SILT FENCE SHALL BE INSTALLED A MINIMUM OF 3 FEET FROM TOE OF FILL IN WETLAND AREAS

NOTE:
PLACE TEMPORARY ROCK SEDIMENT DAMS TYPE- B AND TEMPORARY ROCK SILT CHECKS TYPE-A AT DRAINAGE OUTLETS.

CLEARING AND GRUBBING EROSION CONTROL FOR CONSTRUCTION SHEET 4

NOTE: 4" SCUPPERS ON 6' CENTER FROM 23+65 TO 24+31 AND 25+48 TO 26+20 LT.
FROM 23+67 TO 24+42 AND 25+27 TO 26+17 RT.
NOTE: NO DECK DRAINS DIRECTLY OVER CREEK AND BANKS.



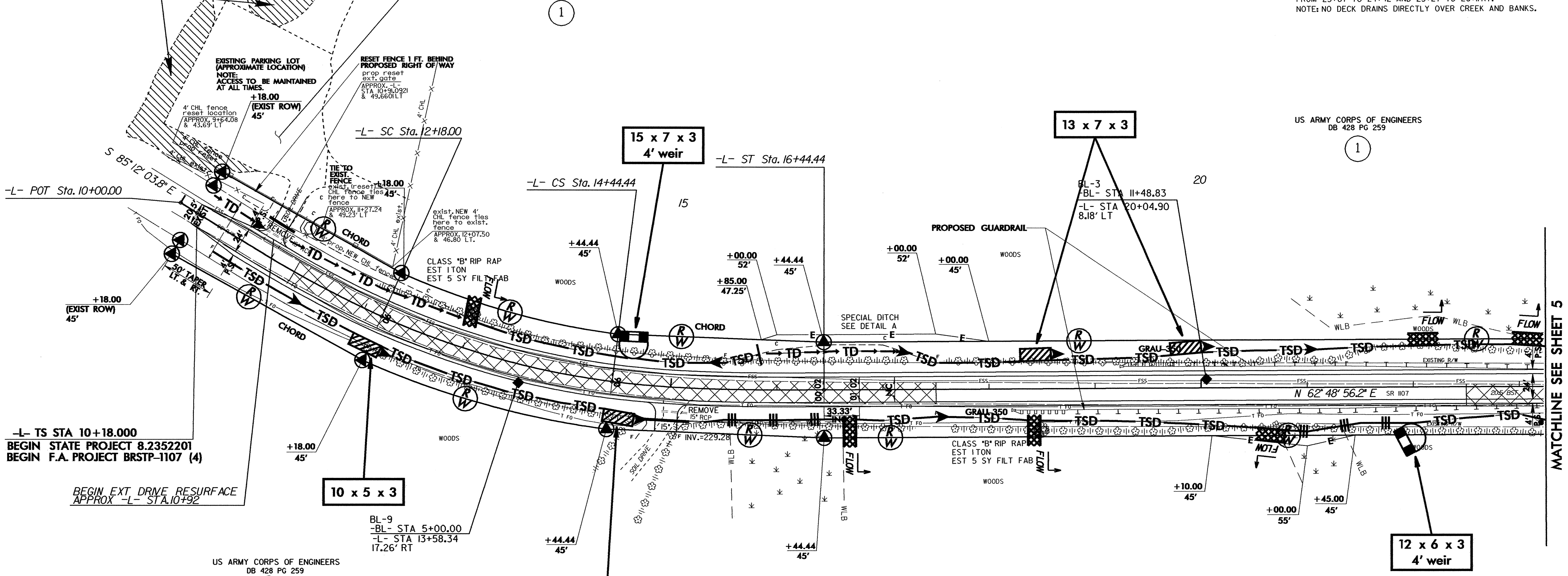
RESURFACE EXIST. PARKING AREA AND DRIVEWAY ABC 6" DEPTH

NOTE: NEED ROW ENTRY TO REGRAVEL PARKING LOT

US ARMY CORPS OF ENGINEERS
DB 428 PG 259

1

AREAS TO BE SEEDED



-L- TS STA 10+18.000
BEGIN STATE PROJECT 8.2352201
BEGIN F.A. PROJECT BRSTP-1107 (4)

BEGIN EXT DRIVE RESURFACE
APPROX -L- STA. 10+92

US ARMY CORPS OF ENGINEERS
DB 428 PG 259

1

US ARMY CORPS OF ENGINEERS
DB 428 PG 259

1

DATUM DESCRIPTION

THE LOCALIZED COORDINATE SYSTEM DEVELOPED FOR THIS PROJECT IS BASED ON THE STATE PLANE COORDINATES ESTABLISHED BY NCDOT FOR MONUMENT "82963-1" WITH NAD 83 STATE PLANE GRID COORDINATES OF NORTHING: 7716817866 EASTING: 2010477436

THE AVERAGE COMBINED GRID FACTOR USED ON THIS PROJECT GROUND TO GRID IS: 0.999927660

THE N.C. LAMBERT GRID BEARING LOCALIZED HORIZONTAL GROUND DISTANCE FROM "82963-1" TO -L- STATION 10+00.00 IS 8 68' 00" 58.78" W 1.7714ft

ALL LINEAR DIMENSIONS ARE LOCALIZED HORIZONTAL DISTANCES VERTICAL DATUM USED IS NGVD 29

-L-

PIs Sta 11+51.45	PI Sta 13+32.06	PIs Sta 15+11.22
$\theta s = 7' 30'' 00.0''$	$\Delta = 16' 59'' 00.0''$ (LT)	$\theta s = 7' 30'' 00.0''$
$Ls = 200.00'$	$* D = 7' 30'' 00.0''$	$Ls = 200.00'$
$LT = 133.45'$	$L = 226.44'$	$LT = 133.45'$
$ST = 66.78'$	$T = 114.06'$	$ST = 66.78'$
	$* R = 763.94'$	
	$SE = .06$	
	$* DESIGN EXCEPTION$	

MATCHLINE SEE SHEET 5