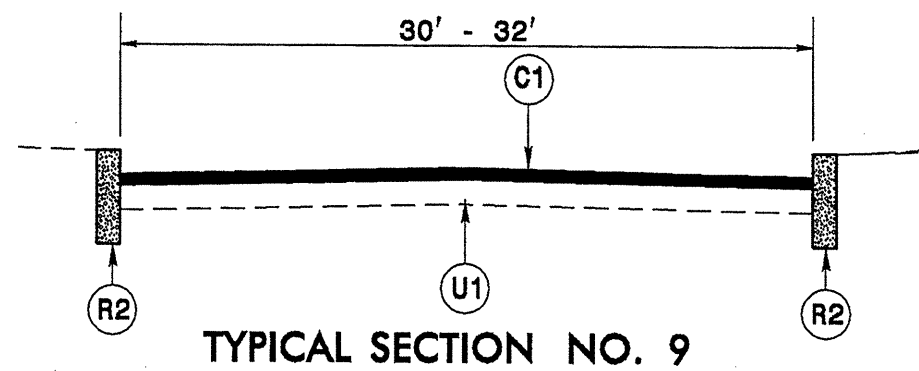
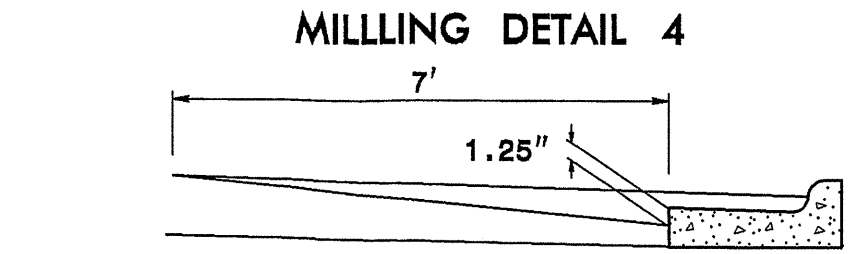


STATE	PROJECT NO.	SHEET NO.	TOTAL SHEETS
N.C.	7CR.10171.5, ETC.	9	16

7CR.10171.5
7CR.10791.5
7CR.20171.5
7CR.20791.5
7CR.307915.5
7CR.307918.5
7CR.307933.5



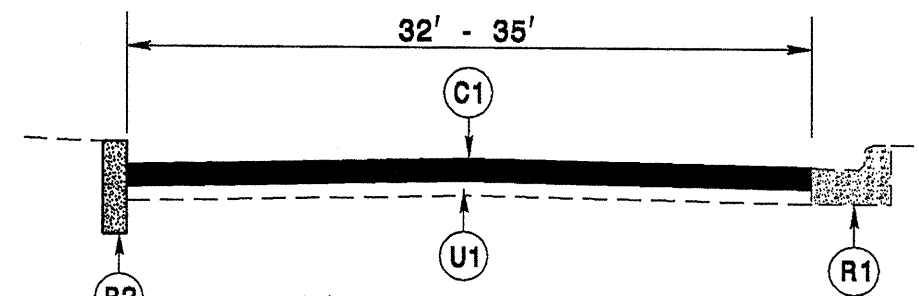
TYPICAL SECTION NO. 9



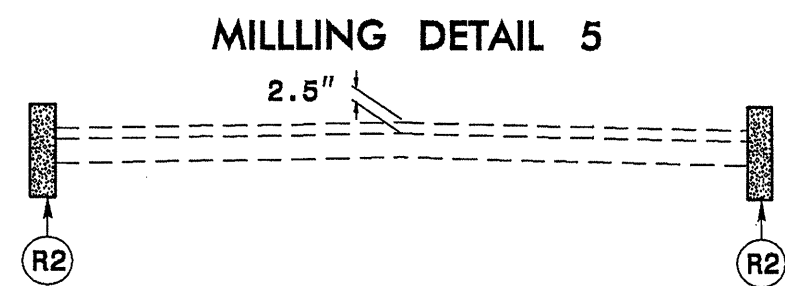
MILLING DETAIL 4

MILL EXISTING ASPHALT PAVEMENT 0-1.25" AT LOCATIONS AS DIRECTED BY THE ENGINEER. ASPHALT PAVEMENT SHALL BE 1.25" BELOW EDGE OF CURB AT LOCATIONS AS DIRECTED BY THE ENGINEER

NOTE:
TO BE USED IN CONJUNCTION WITH TS. NO. 10 ON MAP 8



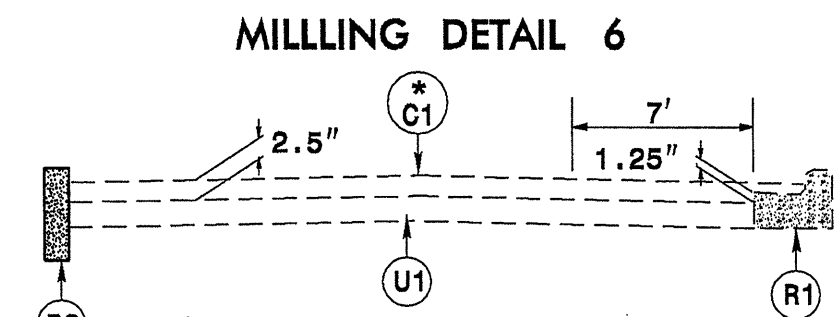
TYPICAL SECTION NO. 10



MILLING DETAIL 5

MILL EXISTING ASPHALT PAVEMENT 2.5" AT LOCATIONS AS DIRECTED BY THE ENGINEER

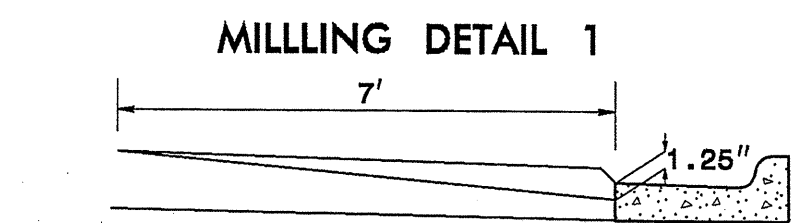
NOTE:
TO BE USED IN CONJUNCTION WITH TS. NO. 9 ON MAP 8



MILLING DETAIL 6

*MILL 2.5" AND REPLACE WITH C1

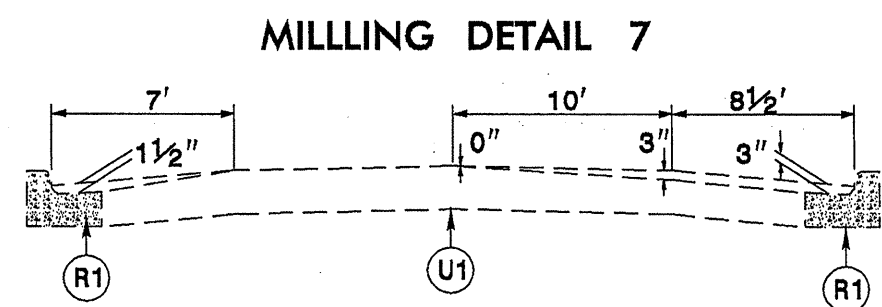
NOTE:
TO BE USED IN CONJUNCTION WITH TS. NO. 10 ON MAP 8



MILLING DETAIL 1

MILL EXISTING ASPHALT PAVEMENT 0-3" AT LOCATIONS AS DIRECTED BY THE ENGINEER. ASPHALT PAVEMENT SHALL BE 1.25" BELOW THE EDGE OF CURB AT LOCATIONS AS DIRECTED BY THE ENGINEER

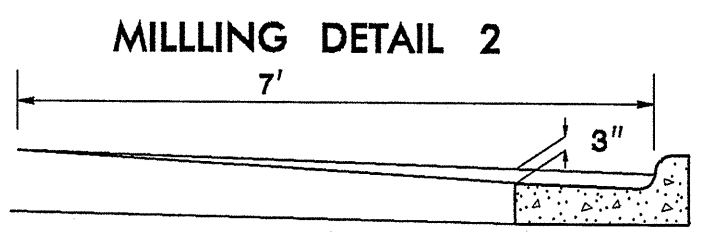
NOTE:
TO BE USED IN CONJUNCTION WITH TS. NO. 7 ON MAP 9



MILLING DETAIL 7

MILL EXISTING ASPHALT PAVEMENT 0-3" IN DEPTH AT LOCATIONS AS DIRECTED BY THE ENGINEER.

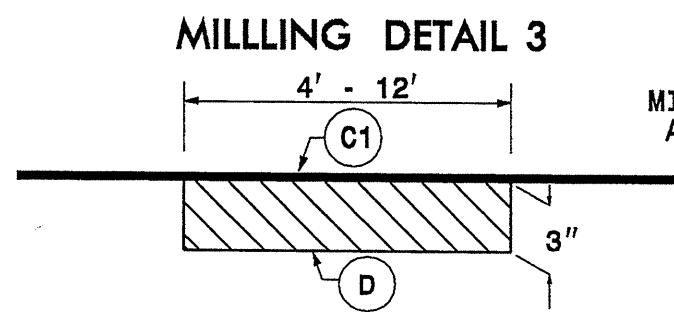
NOTE:
TO BE USED IN CONJUNCTION WITH TS. NO. 6 ON MAP 7



MILLING DETAIL 2

MILL EXISTING ASPHALT PAVEMENT 0"-3" AT LOCATIONS AS DIRECTED BY THE ENGINEER

NOTE:
TO BE USED IN CONJUNCTION WITH TS. NO. 8 ON MAP 9



MILLING DETAIL 3

MILL EXISTING ASPHALT PAVEMENT 3" IN DEPTH, AT LOCATIONS AS DIRECTED BY THE ENGINEER.

NOTE:
TO BE USED IN CONJUNCTION WITH TS. NO. 1, 2 ON MAP 2

PAVEMENT SCHEDULE

C1	PROP. APPROX. 1 1/4" ASPHALT CONCRETE SURFACE COURSE, TYPE S9.5B, AT AN AVERAGE RATE OF 140 LBS. PER SQ. YD.	F	ASPHALT SURFACE TREATMENT, NO. 78M STONE, MAT COAT	
C2	PROP. APPROX. 1" ASPHALT CONCRETE SURFACE COURSE, TYPE SF9.5A, AT AN AVERAGE RATE OF 110 LBS. PER SQ. YD.	R1	EXISTING 2-6 CURB AND GUTTER	
C3	PROP. APPROX. 1 1/2" ASPHALT CONCRETE SURFACE COURSE, TYPE S9.5B, AT AN AVERAGE RATE OF 168 LBS. PER SQ. YD.	R2	EXISTING GRANITE CURB	T SHOULDER RECONSTRUCTION
D	PROP. APPROX. 3" ASPHALT CONCRETE INTERMEDIATE COURSE, TYPE I19.0B, AT AN AVERAGE RATE OF 342 LBS. PER SQ. YD.	U1	EXISTING PAVEMENT.	U2 EXISTING PAVED SHOULDER.
E	PROP. APPROX. 8" ASPHALT CONCRETE BASE COURSE, TYPE B25.0B AT AN AVERAGE RATE OF 456 LBS. PER SQ. YD. IN EACH OF TWO LAYERS			