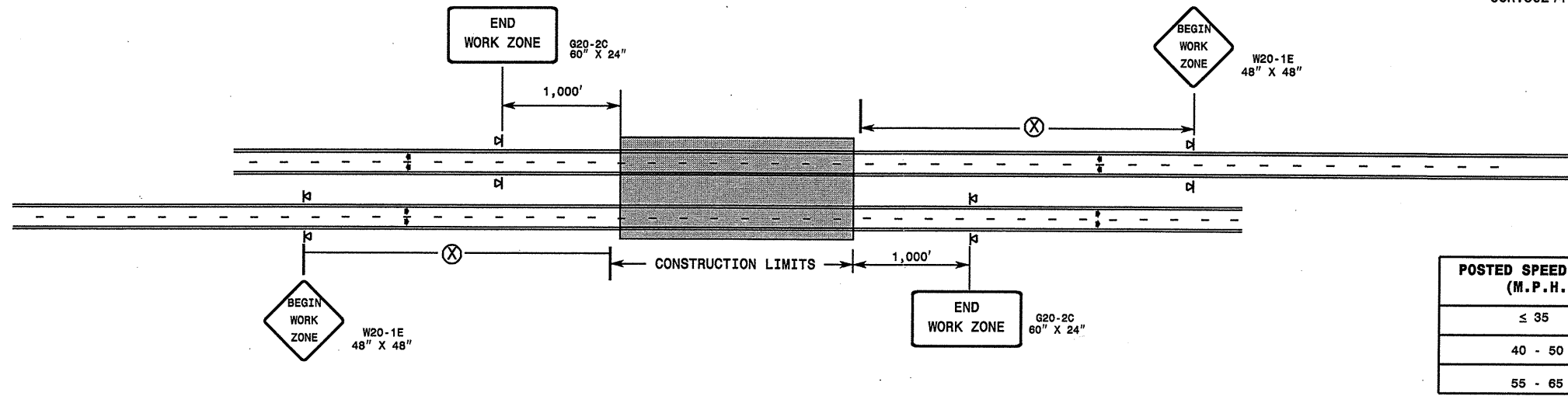


DETAIL A



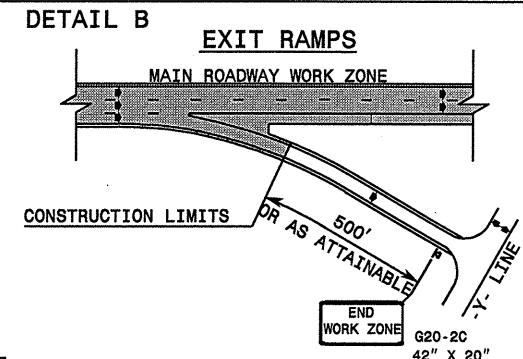
WBS Elements: 6CR.10091.12, 6CR.20091.12, 6CR.300903.12, 6CR.300909.12, 6CR.10241.12, 6CR.20241.12, 6CR.302408.12, 6CR.302423.12, 6CR.302441.12 & 6CR.302442.12

PROJ. REFERENCE NO. See to the Left	SHEET NO. TCP-3
--	--------------------

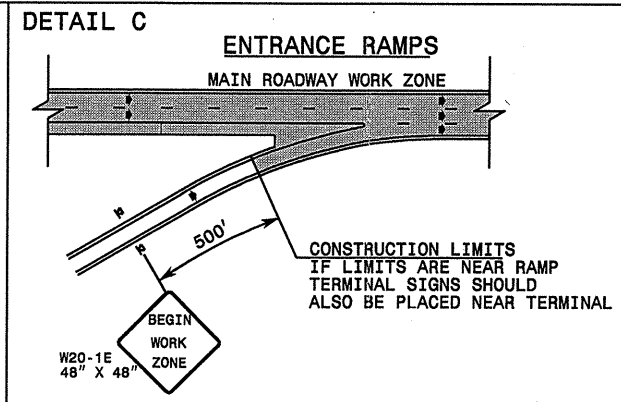
POSTED SPEED LIMIT (M.P.H.)	RECOMMENDED MINIMUM SIGN SPACING
≤ 35	1200'
40 - 50	2200'
55 - 65	6800'

STATE OF NORTH CAROLINA
DEPT. OF TRANSPORTATION
DIVISION OF HIGHWAYS
RALEIGH, N.C.

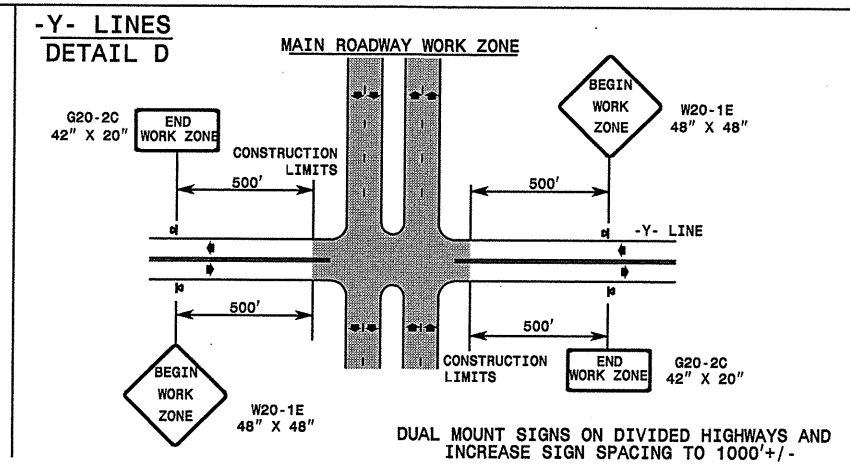
ROADWAYS INTERSECTING ALONG HIGHWAY WORK ZONE



NOTE:
SIGN NOT REQUIRED IF ADVANCE WARNING SIGNS HAVE BEEN PLACED ALONG -Y- LINE THAT RAMP INTERSECTS. IF CONSTRUCTION LIMITS ARE AT END OF RAMP, PLACE SIGN AT END OF RAMP.



CONSTRUCTION LIMITS IF LIMITS ARE NEAR RAMP TERMINAL SIGNS SHOULD ALSO BE PLACED NEAR TERMINAL



DUAL MOUNT SIGNS ON DIVIDED HIGHWAYS AND INCREASE SIGN SPACING TO 1000'+/-

GENERAL NOTES

- DO NOT INSTALL ADVANCE WARNING SIGNS MORE THAN 3 DAYS PRIOR TO BEGINNING OF WORK.
- ALL SIGN SPACING DIMENSIONS ARE APPROXIMATE, FIELD ADJUST AS NECESSARY OR AS DIRECTED.
- WHEN THERE ARE CONSTRUCTION LIMITS ON A DIVIDED -Y- LINE GREATER THAN 1 MILE IN LENGTH, USE THE SAME SIGNING AS FOR A MAIN ROADWAY WORK ZONE. (SEE DETAIL A)
- USE PORTABLE SIGNS.

LEGEND	
⊠	PORTABLE SIGN
➔	DIRECTION OF TRAFFIC FLOW

DETAIL DRAWING FOR
INTERSTATE AND FREEWAY
WORK ZONE SIGNS
(SHORT-DURATION LANE CLOSURES)

SHEET 1 OF 1

APPROVED:	DATE:	DETAIL DRAWING FOR INTERSTATE AND FREEWAY WORK ZONE SIGNS				
SEAL						
SCALE: NONE	DATE: 09-08-2001	<table border="1"> <tr> <th>REVISIONS</th> </tr> <tr> <td> </td> </tr> <tr> <td> </td> </tr> <tr> <td> </td> </tr> </table>	REVISIONS			
REVISIONS						
DWG. BY: MMM	DESIGN BY: MMM					
REVIEWED BY:						