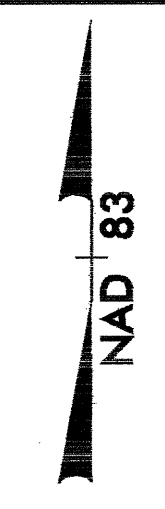


PROJECT REFERENCE NO.		SHEET NO.	
B-3696		EC-4/CONST.4	
R/W SHEET NO.			
ROADWAY DESIGN ENGINEER		HYDRAULICS ENGINEER	

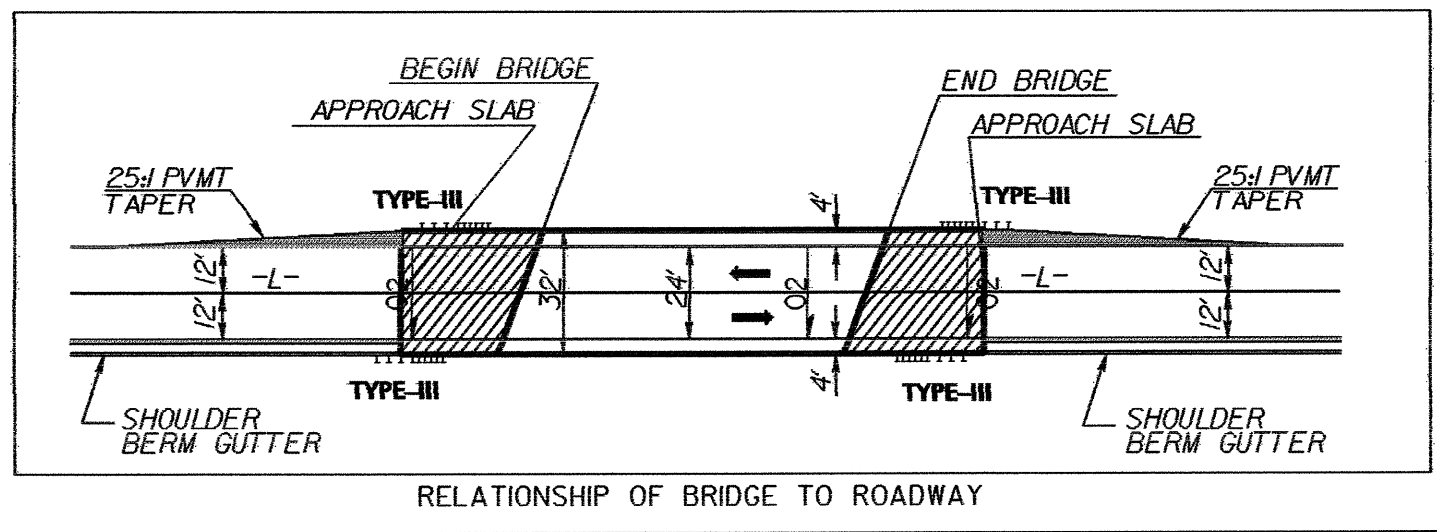
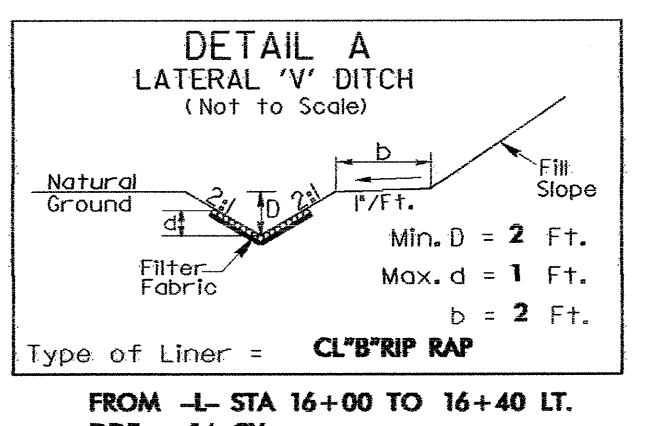
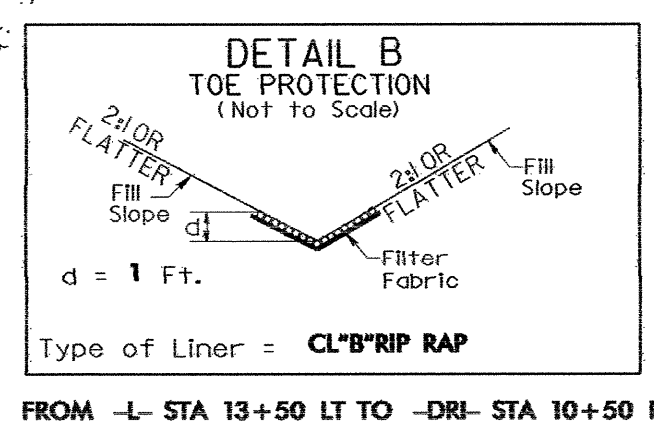
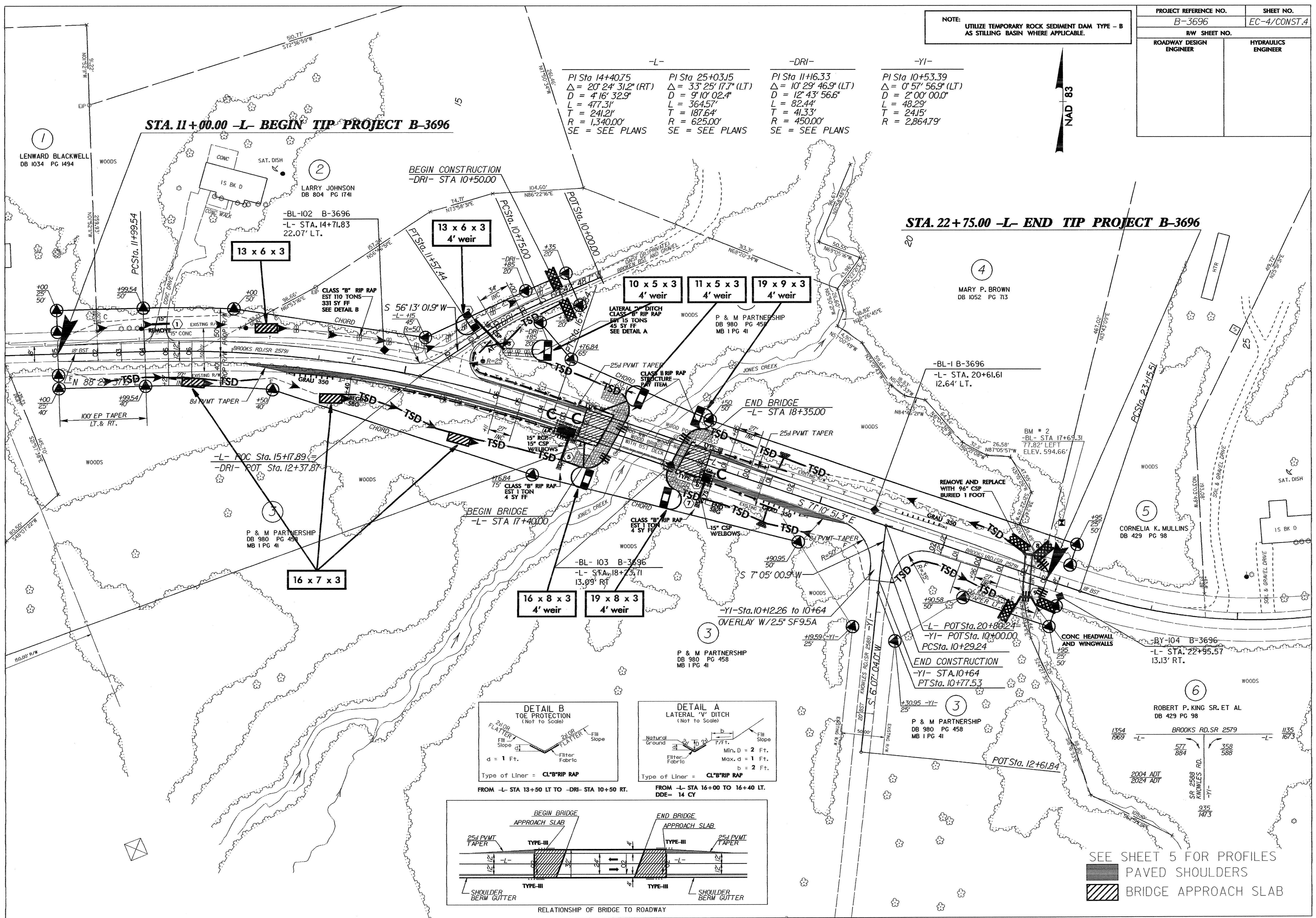
NOTE: UTILIZE TEMPORARY ROCK SEDIMENT DAM TYPE - B AS STILLING BASIN WHERE APPLICABLE.

-L-	-DRI-	-YI-
PI Sta 14+40.75 Δ = 20' 24' 31.2" (RT) D = 4' 16' 32.9" L = 477.31' T = 241.24' R = 1,340.00' SE = SEE PLANS	PI Sta 25+03.15 Δ = 33' 25' 17.7" (LT) D = 9' 10' 02.4" L = 364.57' T = 187.64' R = 625.00' SE = SEE PLANS	PI Sta 11+16.33 Δ = 10' 29' 46.9" (LT) D = 12' 43' 56.6" L = 82.44' T = 41.33' R = 450.00' SE = SEE PLANS
PI Sta 10+53.39 Δ = 0' 57' 56.9" (LT) D = 2' 00' 00.0" L = 48.29' T = 24.15' R = 2,864.79'		



STA. 11+00.00 -L- BEGIN TIP PROJECT B-3696

STA. 22+75.00 -L- END TIP PROJECT B-3696



SEE SHEET 5 FOR PROFILES
 ■ PAVED SHOULDERS
 ▨ BRIDGE APPROACH SLAB