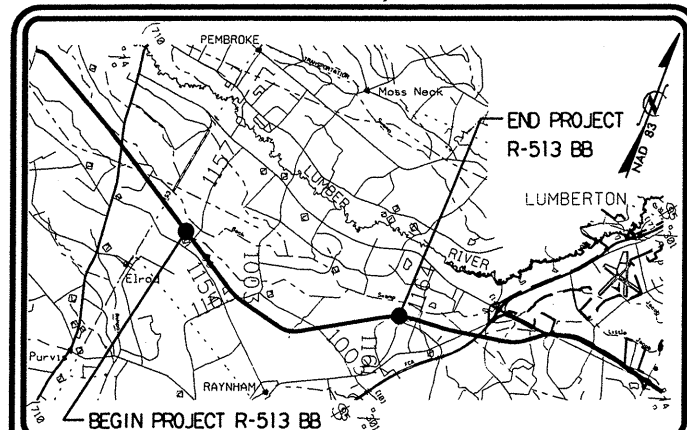


R-0513 BB

PROJECT: 6.469002T

See Sheet 1-A For Index of Sheets
See Sheet 1-B For Conventional Symbols



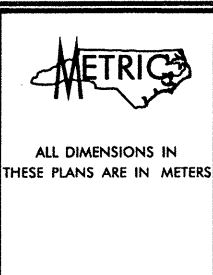
PROJECT VICINITY MAP

STATE OF NORTH CAROLINA
DIVISION OF HIGHWAYS

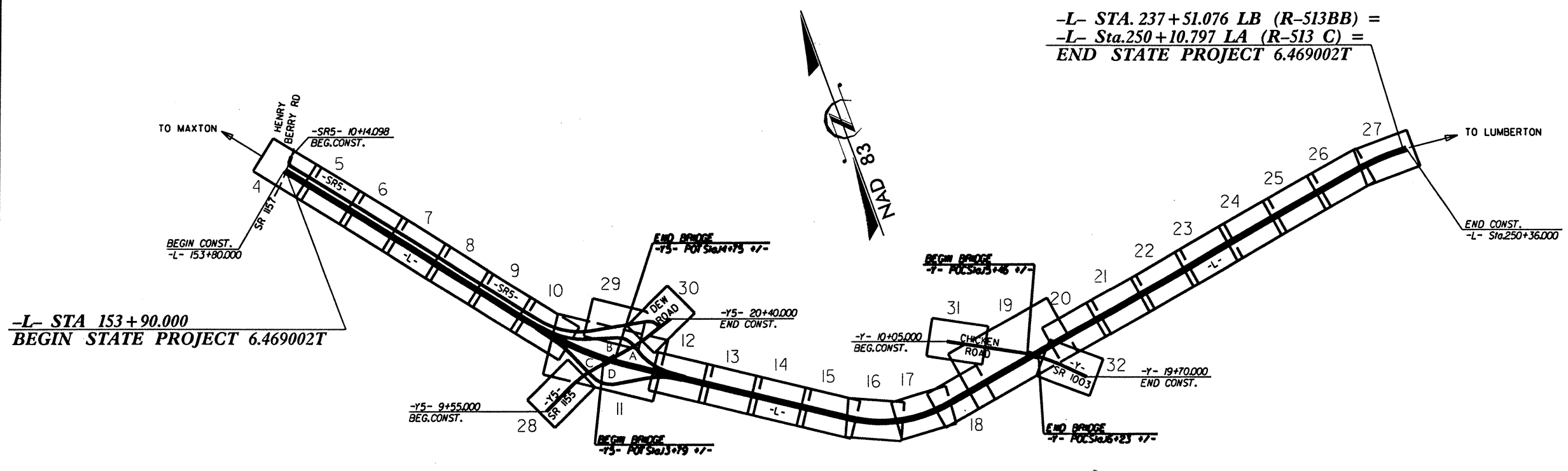
ROBESON COUNTY

LOCATION: US 74 FROM WEST OF SR 1157
TO WEST OF SR 1164

TYPE OF WORK: GRADING, PAVING, DRAINAGE, STRUCTURES,
GUARDRAIL, AND SIGNING



STATE	STATE PROJECT REFERENCE NO.	SHEET NO.	TOTAL SHEETS
N.C.	R-0513 BB	2A	65
STATE PROJ. NO.	F.A. PROJ. NO.	DESCRIPTION	
6.469002T		P.E.	



-L- STA. 237+51.076 LB (R-513BB) =
-L- Sta. 250+10.797 LA (R-513 C) =
END STATE PROJECT 6.469002T

-L- STA 153+90.000
BEGIN STATE PROJECT 6.469002T

THIS IS A FULL CONTROLLED-ACCESS PROJECT WITH ACCESS LIMITED TO INTERCHANGES
CLEARING ON THIS PROJECT SHALL BE PERFORMED TO THE LIMITS ESTABLISHED BY METHOD III (ASSUMED)

INCOMPLETE PLANS
DO NOT USE FOR R/W ACQUISITION
PRELIMINARY PLANS
DO NOT USE FOR CONSTRUCTION

GRAPHIC SCALES PLANS PROFILE (HORIZONTAL) PROFILE (VERTICAL)	DESIGN DATA ADT 2004 = 13,480 ADT 2024 = 30,800 DHV = 10 % D = 55 % T = 32 % * V = 110 km/h * TTST = 22 % * DUAL = 10 %	PROJECT LENGTH LENGTH ROADWAY PROJECT 6.469002T = 8.361 km TOTAL LENGTH STATE PROJECT 6.469002T = 8.361 km	Prepared in the Office of: DIVISION OF HIGHWAYS 1000 Birch Ridge Dr., Raleigh, NC 27610		HYDRAULICS ENGINEER P.E. SIGNATURE: _____ ROADWAY DESIGN ENGINEER	DIVISION OF HIGHWAYS STATE OF NORTH CAROLINA STATE DESIGN ENGINEER DEPARTMENT OF TRANSPORTATION FEDERAL HIGHWAY ADMINISTRATION APPROVED DIVISION ADMINISTRATOR DATE
			1995 STANDARD SPECIFICATIONS RIGHT OF WAY DATE: DECEMBER 15, 2002 PRODUCTION RW LETTING DATE: DECEMBER 21, 2004 PRODUCTION LET	SUE R. FLOWERS PROJECT ENGINEER RICHARD A. SHILLINGLAW, P.E. PROJECT DESIGN ENGINEER		