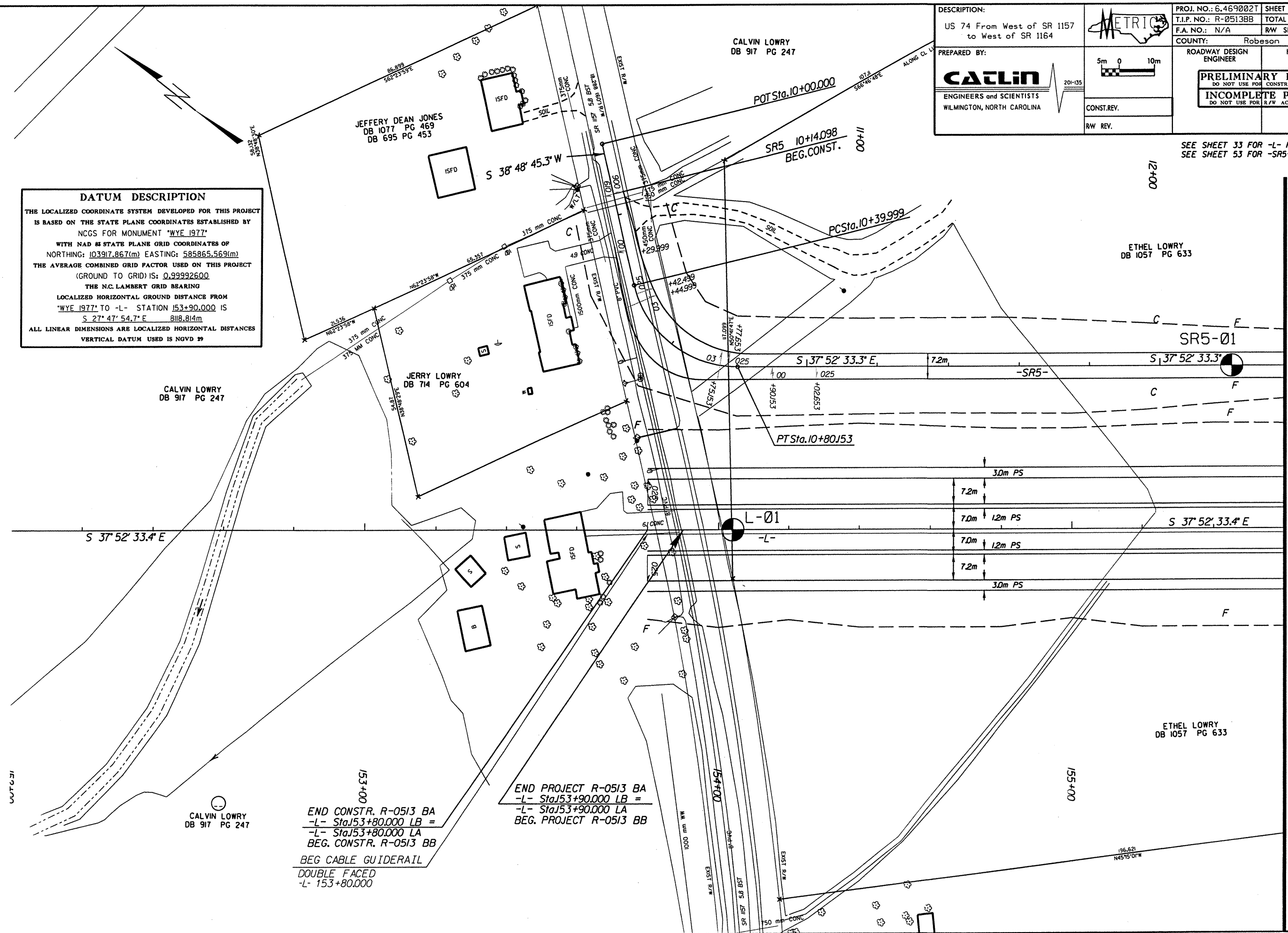


DESCRIPTION: US 74 From West of SR 1157 to West of SR 1164	PROJ. NO.: 6.469002T	SHEET NO. 04
PREPARED BY: CALIN ENGINEERS and SCIENTISTS WILMINGTON, NORTH CAROLINA	T.I.P. NO.: R-0513BB	TOTAL SHEETS: 65
	F.A. NO.: N/A	R/W SHEET NO.:
	COUNTY: Robeson	ROADWAY DESIGN ENGINEER
		HYDRAULICS ENGINEER
		PRELIMINARY PLANS DO NOT USE FOR CONSTRUCTION
		INCOMPLETE PLANS DO NOT USE FOR R/W ACQUISITION

DATUM DESCRIPTION
 THE LOCALIZED COORDINATE SYSTEM DEVELOPED FOR THIS PROJECT IS BASED ON THE STATE PLANE COORDINATES ESTABLISHED BY NCGS FOR MONUMENT "WYE 1977"
 WITH NAD 83 STATE PLANE GRID COORDINATES OF NORTHING: 103917.867(m) EASTING: 585865.569(m)
 THE AVERAGE COMBINED GRID FACTOR USED ON THIS PROJECT (GROUND TO GRID) IS: 0.99992600
 THE N.C. LAMBERT GRID BEARING LOCALIZED HORIZONTAL GROUND DISTANCE FROM "WYE 1977" TO -L- STATION 153+90.000 IS S 27° 47' 54.7" E 818.814m
 ALL LINEAR DIMENSIONS ARE LOCALIZED HORIZONTAL DISTANCES
 VERTICAL DATUM USED IS NGVD 29



SEE SHEET 33 FOR -L- PROFILE
 SEE SHEET 53 FOR -SR5- PROFILE

MATCHLINE -L- STA 155 + 60.000

END PROJECT R-0513 BA
 -L- Sta 153+90.000 LB =
 -L- Sta 153+90.000 LA
 BEG. PROJECT R-0513 BB
 BEG CABLE GUIDERAIL
 DOUBLE FACED
 -L- 153+80.000