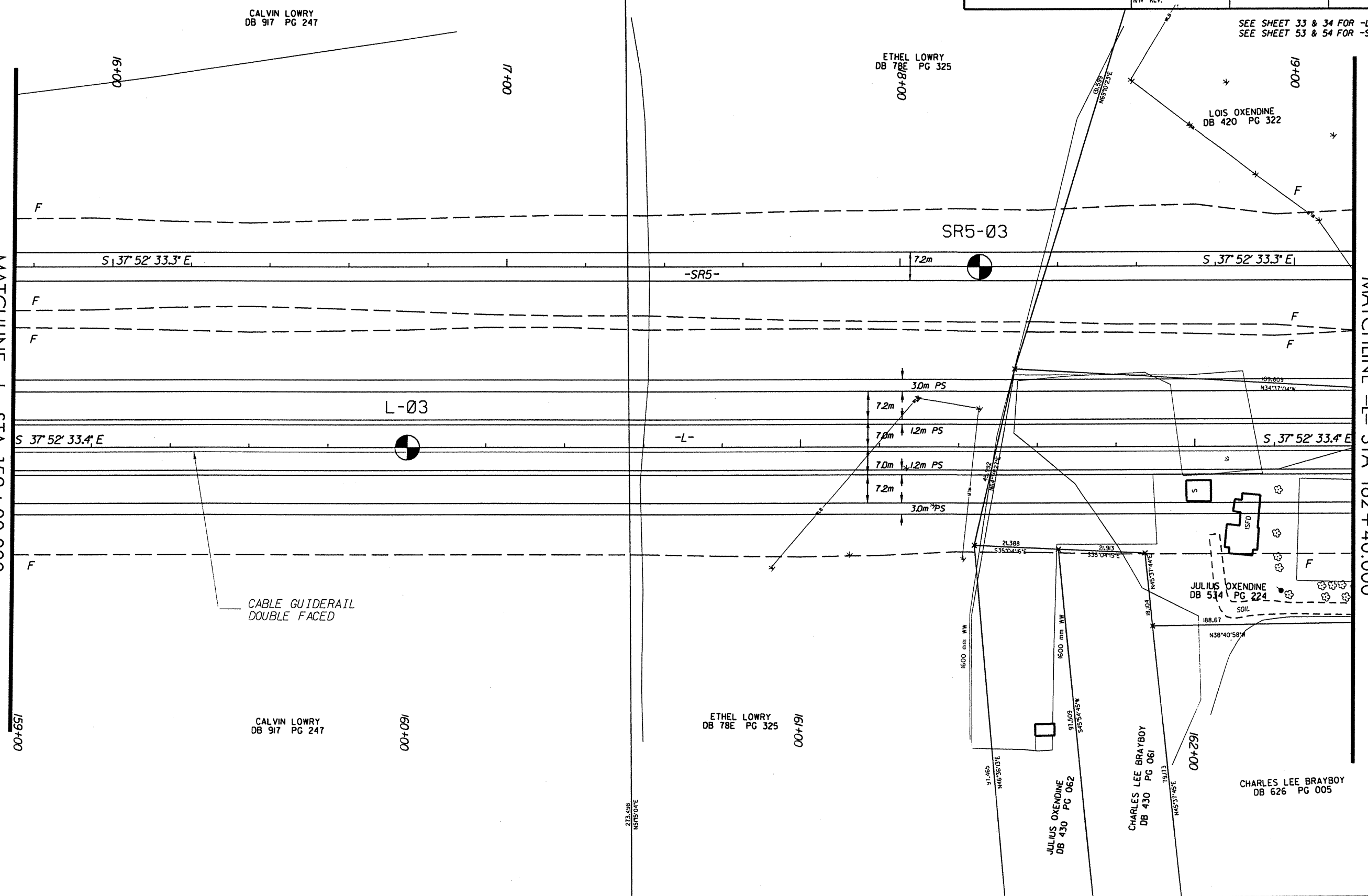


DESCRIPTION: US 74 From West of SR 1157 to West of SR 1164		PROJ. NO.: 6.469002T	SHEET NO. 36
		T.I.P. NO.: R-0513BB	TOTAL SHEETS: 65
PREPARED BY: CALVIN ENGINEERS and SCIENTISTS WILMINGTON, NORTH CAROLINA		F.A. NO.: N/A	R/W SHEET NO.:
CONST. REV.		COUNTY: Robeson	ROADWAY DESIGN ENGINEER
R/W REV.		PRELIMINARY PLANS DO NOT USE FOR CONSTRUCTION INCOMPLETE PLANS DO NOT USE FOR R/W ACQUISITION	

SEE SHEET 33 & 34 FOR -L- PROFILE
SEE SHEET 53 & 54 FOR -SR5- PROFILE

MATCHLINE -L- STA 159+00.000

MATCHLINE -L- STA 162+40.000



CALVIN LOWRY
DB 917 PG 247

ETHEL LOWRY
DB 78E PG 325

LOIS OXENDINE
DB 420 PG 322

L-03

CABLE GUIDERAIL
DOUBLE FACED

CALVIN LOWRY
DB 917 PG 247

ETHEL LOWRY
DB 78E PG 325

JULIUS OXENDINE
DB 430 PG 062

CHARLES LEE BRAYBOY
DB 430 PG 061

CHARLES LEE BRAYBOY
DB 626 PG 005

JULIUS OXENDINE
DB 514 PG 224