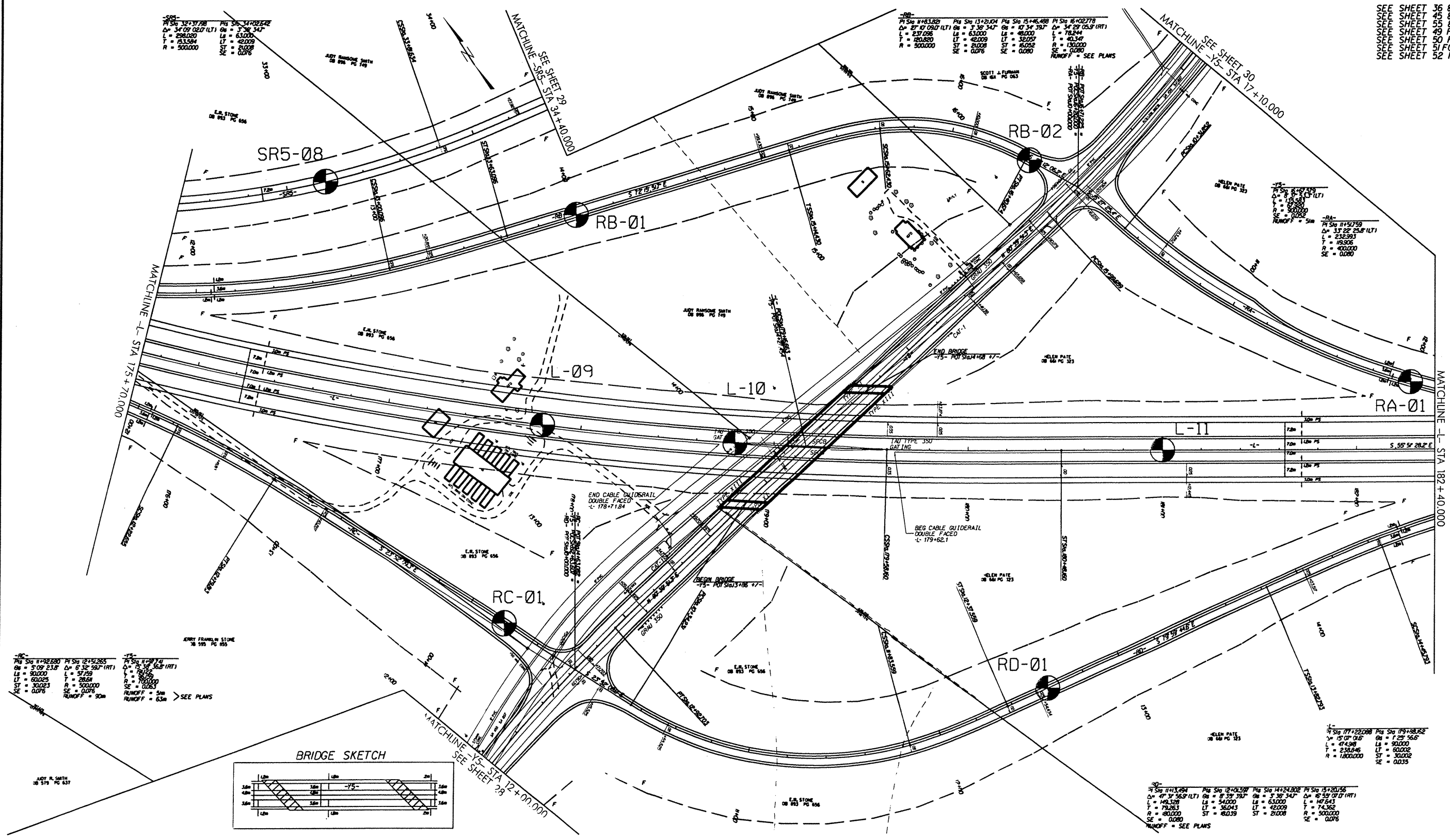
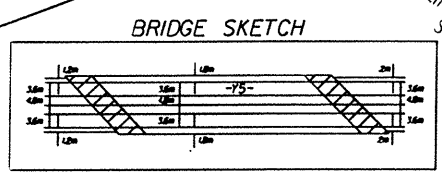


DESCRIPTION: US 74 From West of SR 1157 to West of SR 1164	PROJ. NO.: 6.4690021 T.I.P. NO.: R-05138B F.A. NO.: N/A	SHEET NO. 11 TOTAL SHEETS: 65 RW SHEET NO.:
PREPARED BY: CALIN ENGINEERS and SCIENTISTS WILMINGTON, NORTH CAROLINA	10m 0 20m 20'-135' CONST. REV. RW REV.	COUNTY: Robeson ROADWAY DESIGN ENGINEER HYDRAULICS ENGINEER
PRELIMINARY PLANS DO NOT USE FOR CONSTRUCTION INCOMPLETE PLANS DO NOT USE FOR R/W ACQUISITION		



SEE SHEET 36 & 37 FOR -L- PROFILE
 SEE SHEET 45 & 46 FOR -YS- PROFILE
 SEE SHEET 55 & 56 FOR -SR5- PROFILE
 SEE SHEET 49 FOR -RA- PROFILE
 SEE SHEET 50 FOR -RB- PROFILE
 SEE SHEET 51 FOR -RC- PROFILE
 SEE SHEET 52 FOR -RD- PROFILE



PI Stn 11482.680 PI Stn 12452.265
 Δ = 5° 09' 23.0" Δ = 6° 32' 50.7" (RT)
 L = 50.000 L = 57.250
 T = 8.0000 T = 28.684
 ST = 30.023 R = 500.000
 SE = 0.076 SE = 0.076
 RUNOFF = 5m
 RUNOFF = 5.3m
 SEE PLANS

PI Stn 11483.820 PI Stn 13121.04 PI Stn 15146.488 PI Stn 16102.778
 Δ = 2° 47' 09.0" (LT) Δ = 3° 36' 34.7" Δ = 17° 34' 39.7" Δ = 34° 29' 05.9" (RT)
 L = 237.036 L = 63.000 L = 40.000 L = 78.244
 T = 80.820 T = 42.000 T = 32.000 T = 40.340
 R = 500.000 ST = 20.008 ST = 45.052 R = 130.000
 SE = 0.076 SE = 0.090 SE = 0.090
 RUNOFF = SEE PLANS

PI Stn 11517.759
 Δ = 13° 22' 25.8" (LT)
 L = 11.000
 T = 4.000
 R = 500.000
 SE = 0.052
 RUNOFF = 5m

PI Stn 11411.694 PI Stn 12401.597 PI Stn 14124.802 PI Stn 15120.556
 Δ = 4° 47' 56.9" (LT) Δ = 8° 39' 39.7" Δ = 17° 34' 39.7" Δ = 15° 59' 07.1" (RT)
 L = 145.328 L = 64.000 L = 63.000 L = 47.644
 T = 73.263 T = 36.043 T = 42.000 L = 74.362
 R = 400.000 ST = 40.039 ST = 20.008 R = 500.000
 SE = 0.080 SE = 0.076
 RUNOFF = SEE PLANS