
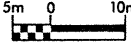
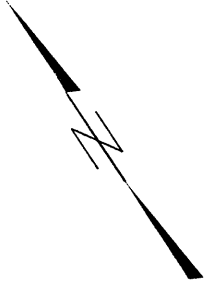
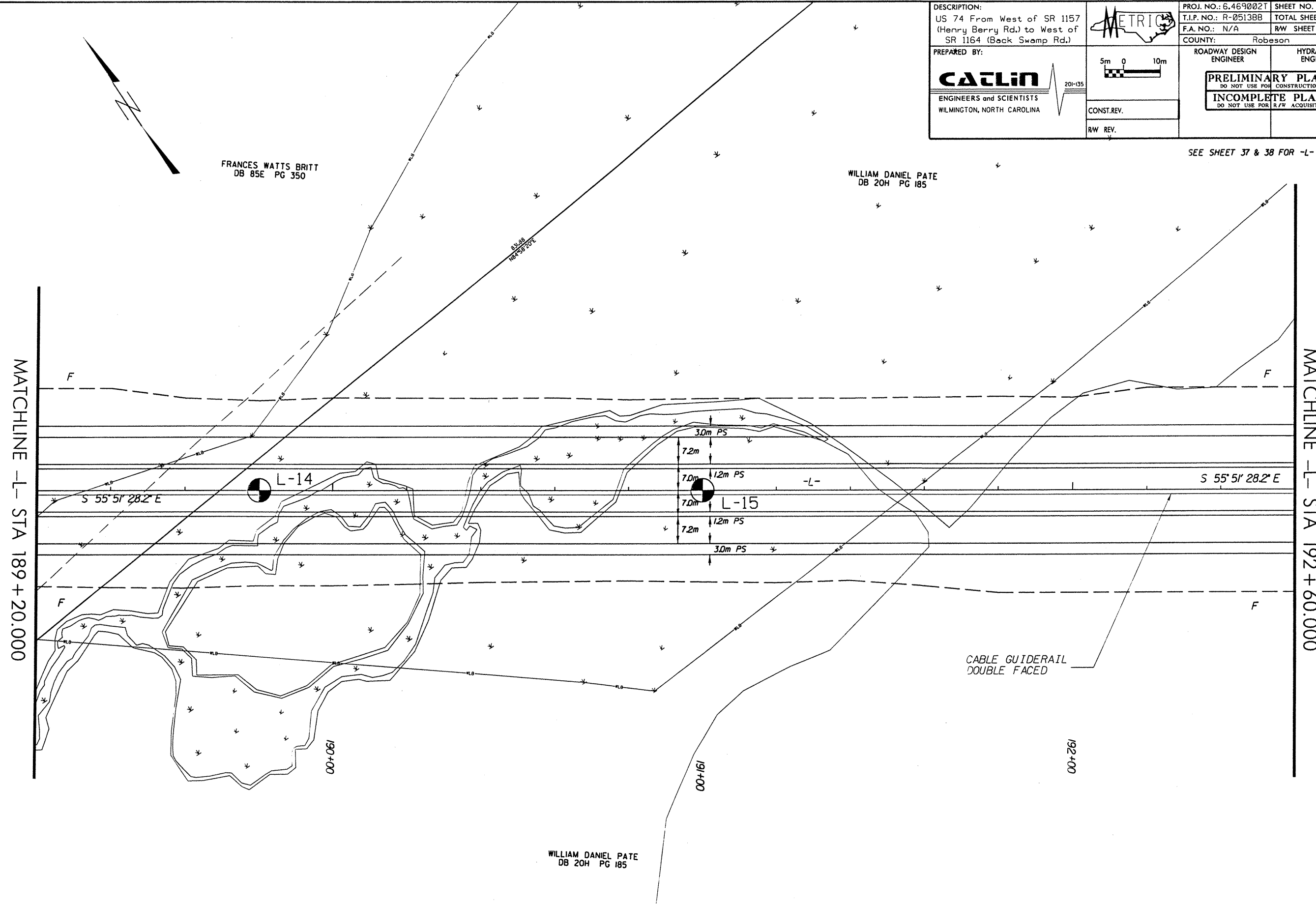


DESCRIPTION: US 74 From West of SR 1157 (Henry Berry Rd.) to West of SR 1164 (Back Swamp Rd.)		PROJ. NO.: 6.469002T	SHEET NO.: 4
		T.I.P. NO.: R-0513BB	TOTAL SHEETS: 65
PREPARED BY: CALIN ENGINEERS and SCIENTISTS WILMINGTON, NORTH CAROLINA	 	F.A. NO.: N/A	R/W SHEET NO.:
		COUNTY: Robeson	ROADWAY DESIGN ENGINEER
		PRELIMINARY PLANS DO NOT USE FOR CONSTRUCTION INCOMPLETE PLANS DO NOT USE FOR R/W ACQUISITION	
		CONST. REV.	
		R/W REV.	

SEE SHEET 37 & 38 FOR -L- PROFILE



MATCHLINE -L- STA 189+20.000

MATCHLINE -L- STA 192+60.000

FRANCES WATTS BRITT
DB 85E PG 350

WILLIAM DANIEL PATE
DB 20H PG 185

WILLIAM DANIEL PATE
DB 20H PG 185

CABLE GUIDERAIL
DOUBLE FACED

S 55° 51' 28.2" E

S 55° 51' 28.2" E

L-14

L-15

190+00

191+00

192+00