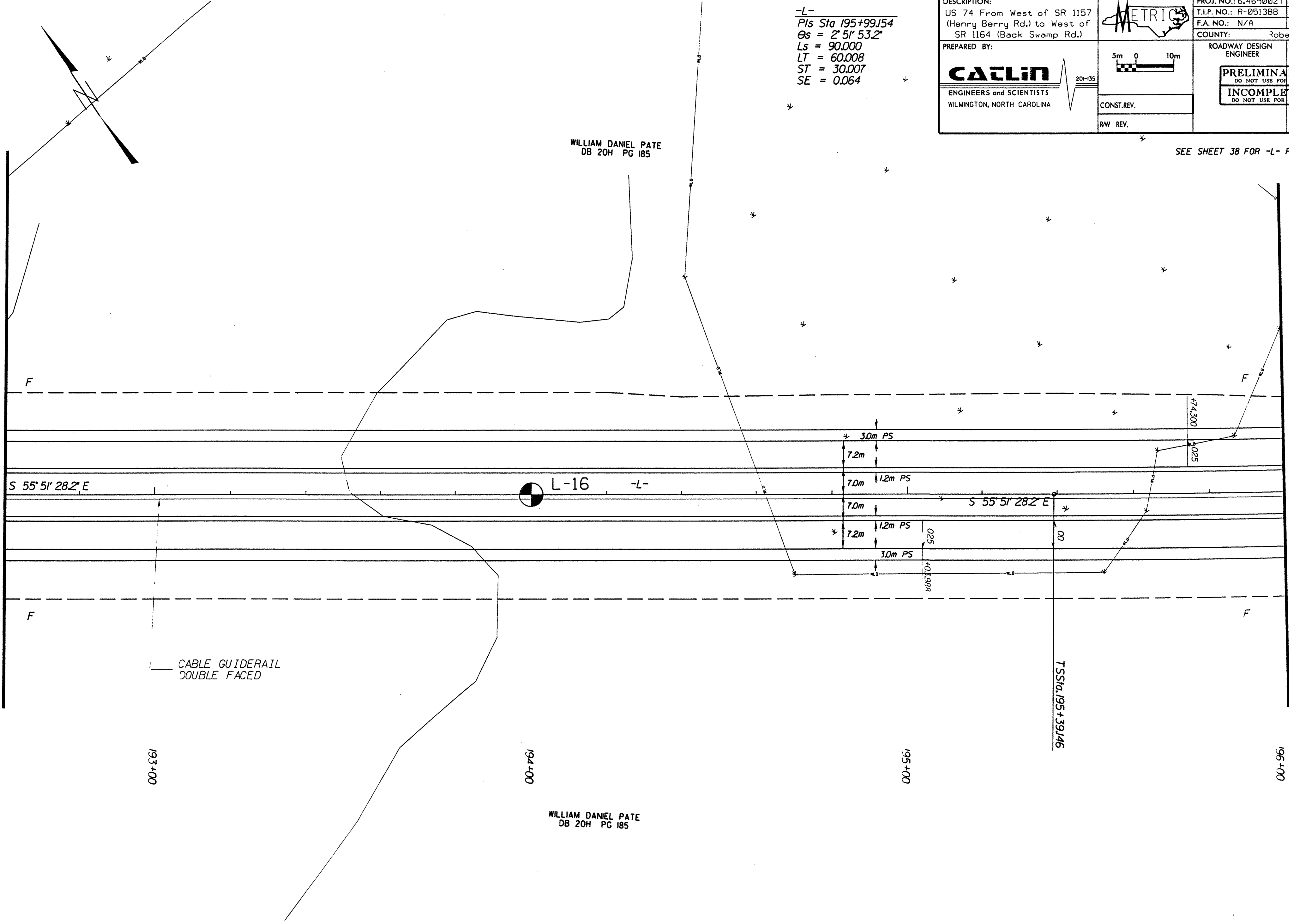


-L-  
 Pts Sta 195+99.154  
 $\theta_s = 2^\circ 51' 53.2''$   
 $L_s = 90.000$   
 $LT = 60.008$   
 $ST = 30.007$   
 $SE = 0.064$

DESCRIPTION: US 74 From West of SR 1157 (Henry Berry Rd.) to West of SR 1164 (Bock Swamp Rd.)	PROJ. NO.: 6.469002T T.I.P. NO.: R-0513BB F.A. NO.: N/A COUNTY: Robeson	SHEET NO.: 15 TOTAL SHEETS: 65 RW SHEET NO.:
PREPARED BY: <b>CAELIN</b> ENGINEERS and SCIENTISTS WILMINGTON, NORTH CAROLINA	ROADWAY DESIGN ENGINEER HYDRAULICS ENGINEER	SEE SHEET 38 FOR -L- PROFILE
201-135 CONST. REV. RW REV.	5m 0 10m METRIC	<b>PRELIMINARY PLANS</b> DO NOT USE FOR CONSTRUCTION <b>INCOMPLETE PLANS</b> DO NOT USE FOR R/W ACQUISITION

MATCHLINE -L- STA 192+60.000

MATCHLINE -L- STA 196+00.000



CABLE GUIDERAIL  
DOUBLE FACED

L-16 -L-

S 55° 51' 28.2" E

S 55° 51' 28.2" E

193+00

194+00

195+00

196+00

WILLIAM DANIEL PATE  
DB 20H PG 185

WILLIAM DANIEL PATE  
DB 20H PG 185

TSS Sta 195+39.146