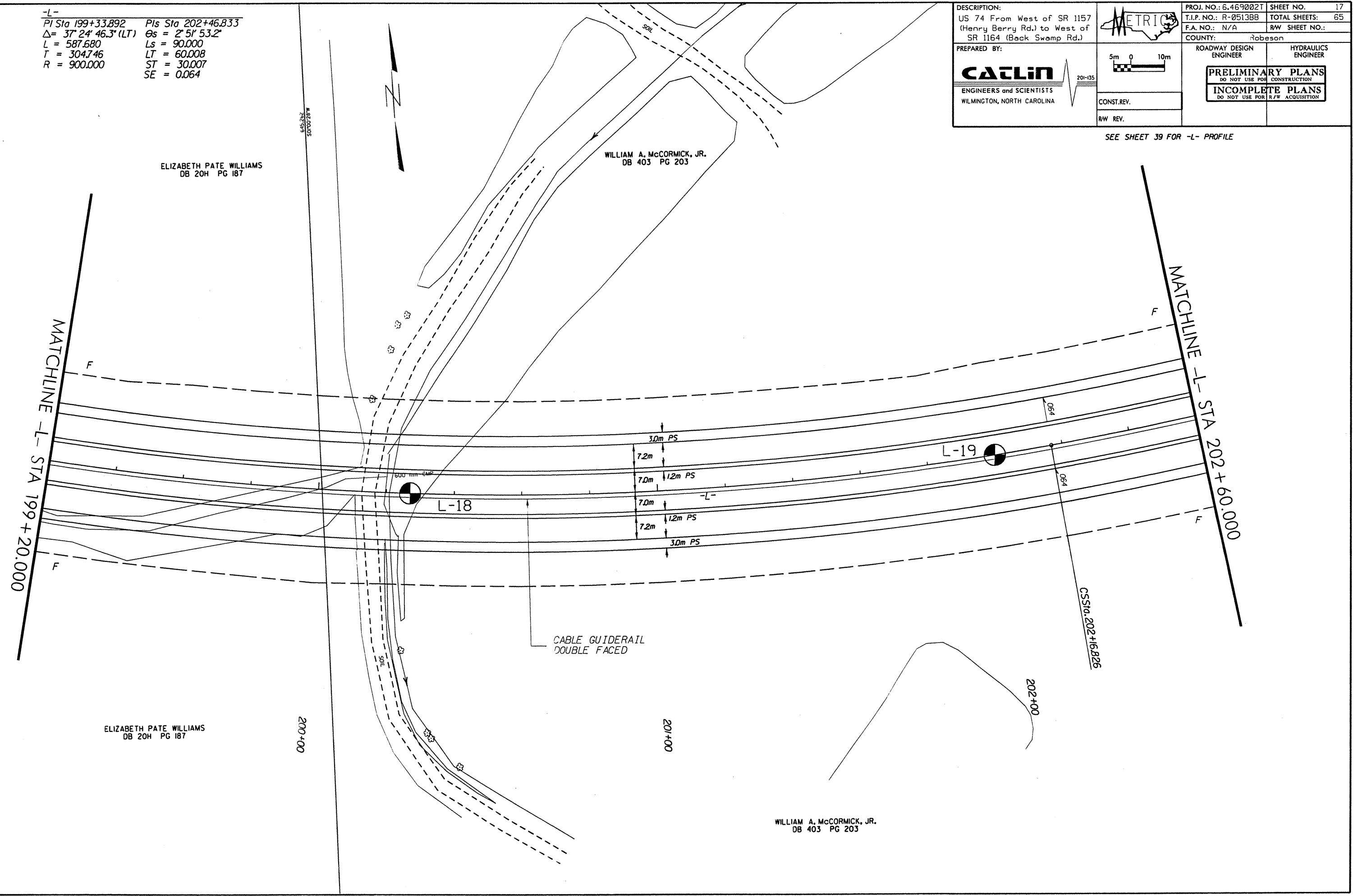


-L-  
 PI Sta 199+33.892 Pls Sta 202+46.833  
 $\Delta = 37^\circ 24' 46.3" (LT)$   $\Theta_s = 2^\circ 51' 53.2"$   
 $L = 587.680$   $L_s = 90.000$   
 $T = 304.746$   $LT = 60.008$   
 $R = 900.000$   $ST = 30.007$   
 $SE = 0.064$

DESCRIPTION: US 74 From West of SR 1157 (Henry Berry Rd.) to West of SR 1164 (Back Swamp Rd.)	PROJ. NO.: 6.469002T T.I.P. NO.: R-0513BB F.A. NO.: N/A	SHEET NO. 17 TOTAL SHEETS: 65 RW SHEET NO.:
	COUNTY: Robeson	
PREPARED BY: <b>CALIN</b> ENGINEERS and SCIENTISTS WILMINGTON, NORTH CAROLINA	ROADWAY DESIGN ENGINEER HYDRAULICS ENGINEER	PRELIMINARY PLANS DO NOT USE FOR CONSTRUCTION INCOMPLETE PLANS DO NOT USE FOR R/W ACQUISITION
CONST. REV. RW REV.	SEE SHEET 39 FOR -L- PROFILE	



ELIZABETH PATE WILLIAMS  
 DB 20H PG 187

WILLIAM A. McCORMICK, JR.  
 DB 403 PG 203

ELIZABETH PATE WILLIAMS  
 DB 20H PG 187

WILLIAM A. McCORMICK, JR.  
 DB 403 PG 203