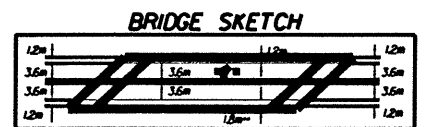
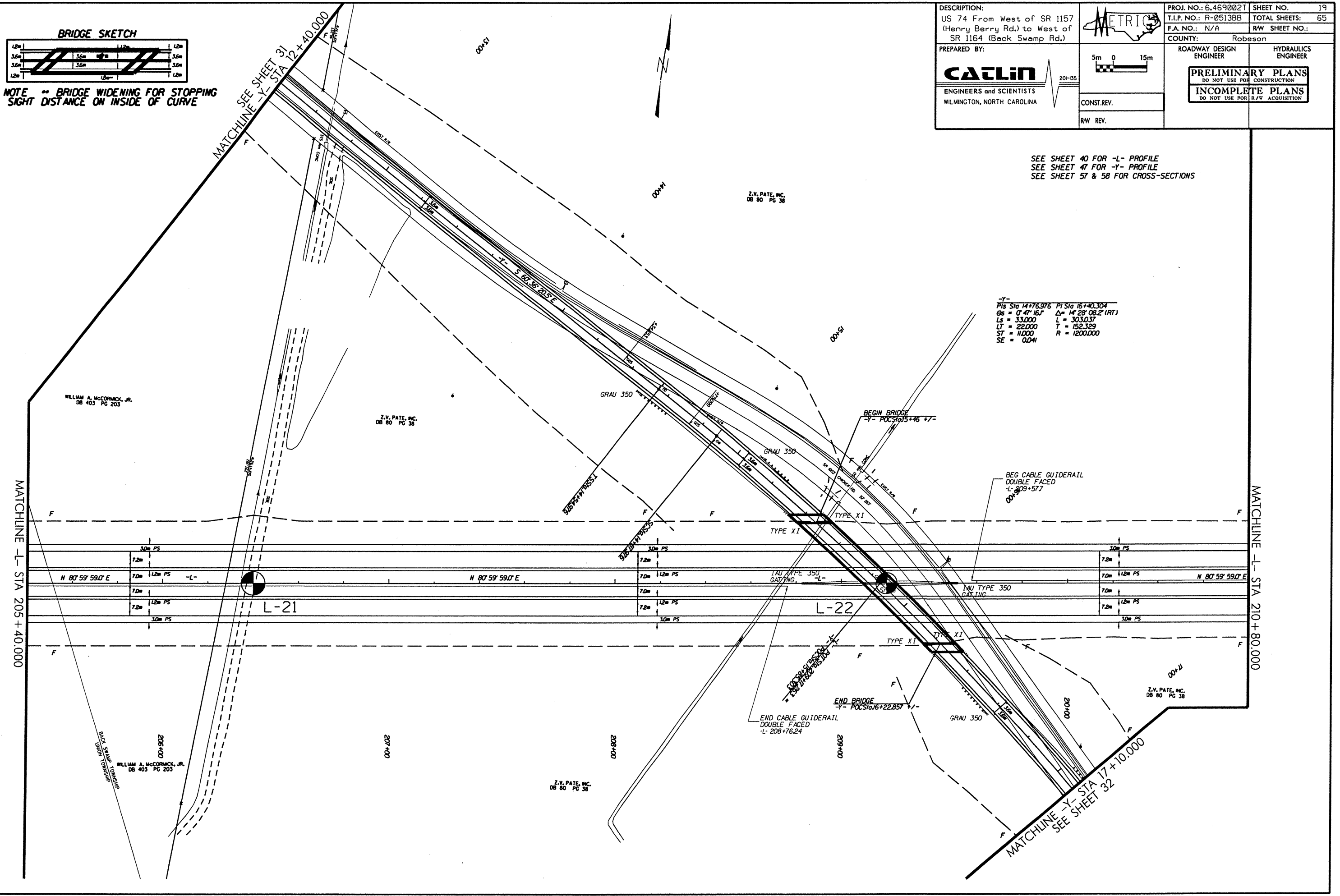


DESCRIPTION: US 74 From West of SR 1157 (Henry Berry Rd.) to West of SR 1164 (Back Swamp Rd.)	PROJ. NO.: 6.469002T	SHEET NO. 19
	T.I.P. NO.: R-0513BB	TOTAL SHEETS: 65
PREPARED BY: CALIN ENGINEERS and SCIENTISTS WILMINGTON, NORTH CAROLINA	F.A. NO.: N/A	R/W SHEET NO.:
	COUNTY: Robeson	
	ROADWAY DESIGN ENGINEER	HYDRAULICS ENGINEER
	PRELIMINARY PLANS DO NOT USE FOR CONSTRUCTION	
	INCOMPLETE PLANS DO NOT USE FOR R/W ACQUISITION	



NOTE ** BRIDGE WIDENING FOR STOPPING SIGHT DISTANCE ON INSIDE OF CURVE



SEE SHEET 40 FOR -L- PROFILE
SEE SHEET 47 FOR -Y- PROFILE
SEE SHEET 57 & 58 FOR CROSS-SECTIONS

-Y-
Pis Sta 14+76.976 P1 Sta 16+40.304
Cs = 0° 47' 16" Δ = 14° 28' 08.2" (RT)
Ls = 33.000 L = 303.037
LT = 22.000 T = 152.329
ST = 11.000 R = 1200.000
SE = 0.041