
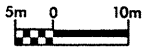
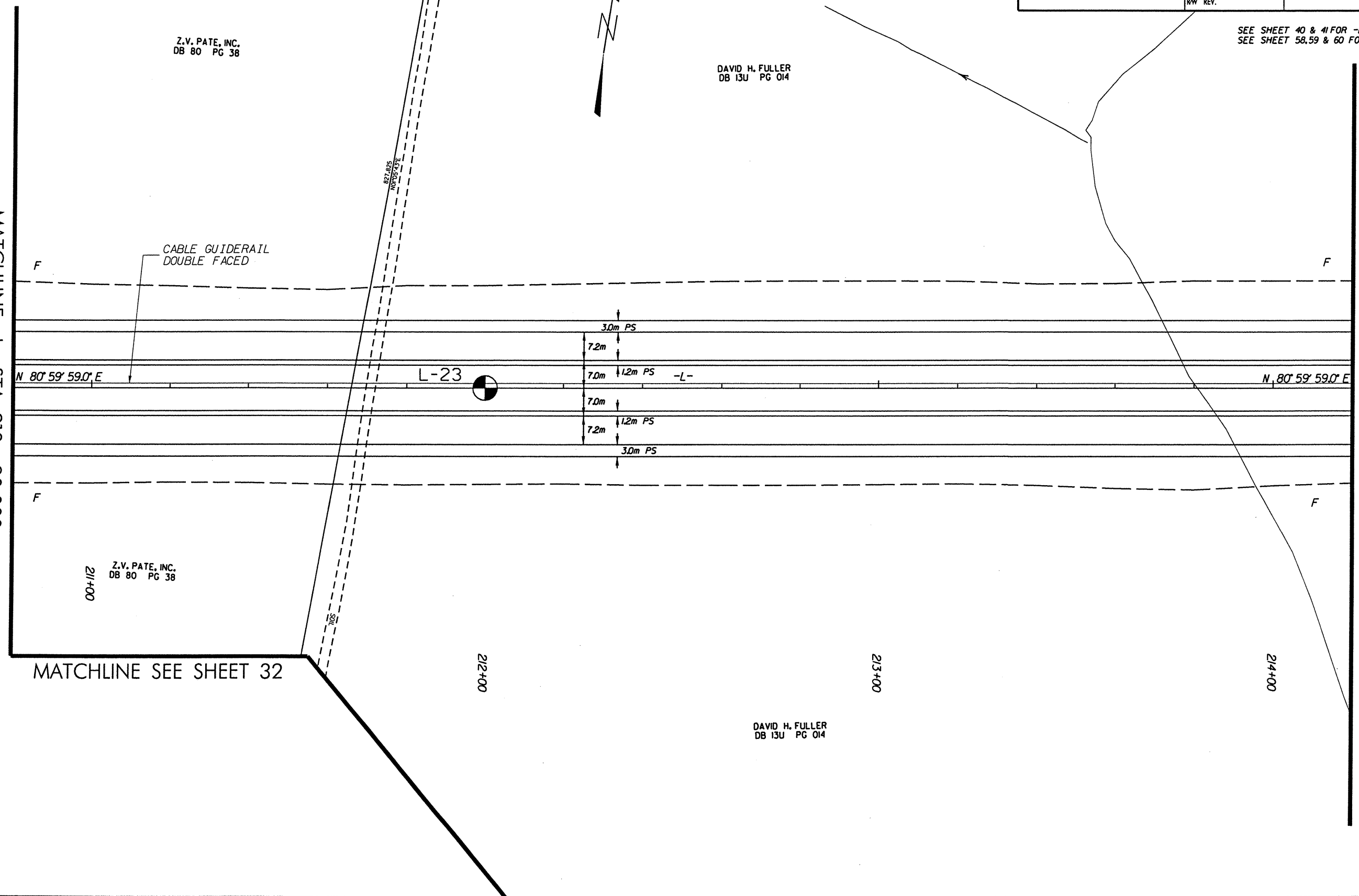


DESCRIPTION: US 74 From West of SR 1157 (Henry Berry Rd.) to West of SR 1164 (Back Swamp Rd.)		PROJ. NO.: 6.469002T	SHEET NO. 20
		T.I.P. NO.: R-0513BB	TOTAL SHEETS: 65
PREPARED BY: CAELIN ENGINEERS and SCIENTISTS WILMINGTON, NORTH CAROLINA		F.A. NO.: N/A	R/W SHEET NO.:
201-135		COUNTY: Robeson	ROADWAY DESIGN ENGINEER
CONST. REV.		PRELIMINARY PLANS DO NOT USE FOR CONSTRUCTION	
R/W REV.		INCOMPLETE PLANS DO NOT USE FOR R/W ACQUISITION	

SEE SHEET 40 & 41 FOR -L- PROFILE
SEE SHEET 58.59 & 60 FOR CROSS-SECTIONS

MATCHLINE -L- STA 210+80.000

MATCHLINE -L- STA 214+20.000



Z.V. PATE, INC.
DB 80 PG 38

DAVID H. FULLER
DB 13U PG 014

Z.V. PATE, INC.
DB 80 PG 38

DAVID H. FULLER
DB 13U PG 014

MATCHLINE SEE SHEET 32