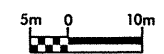


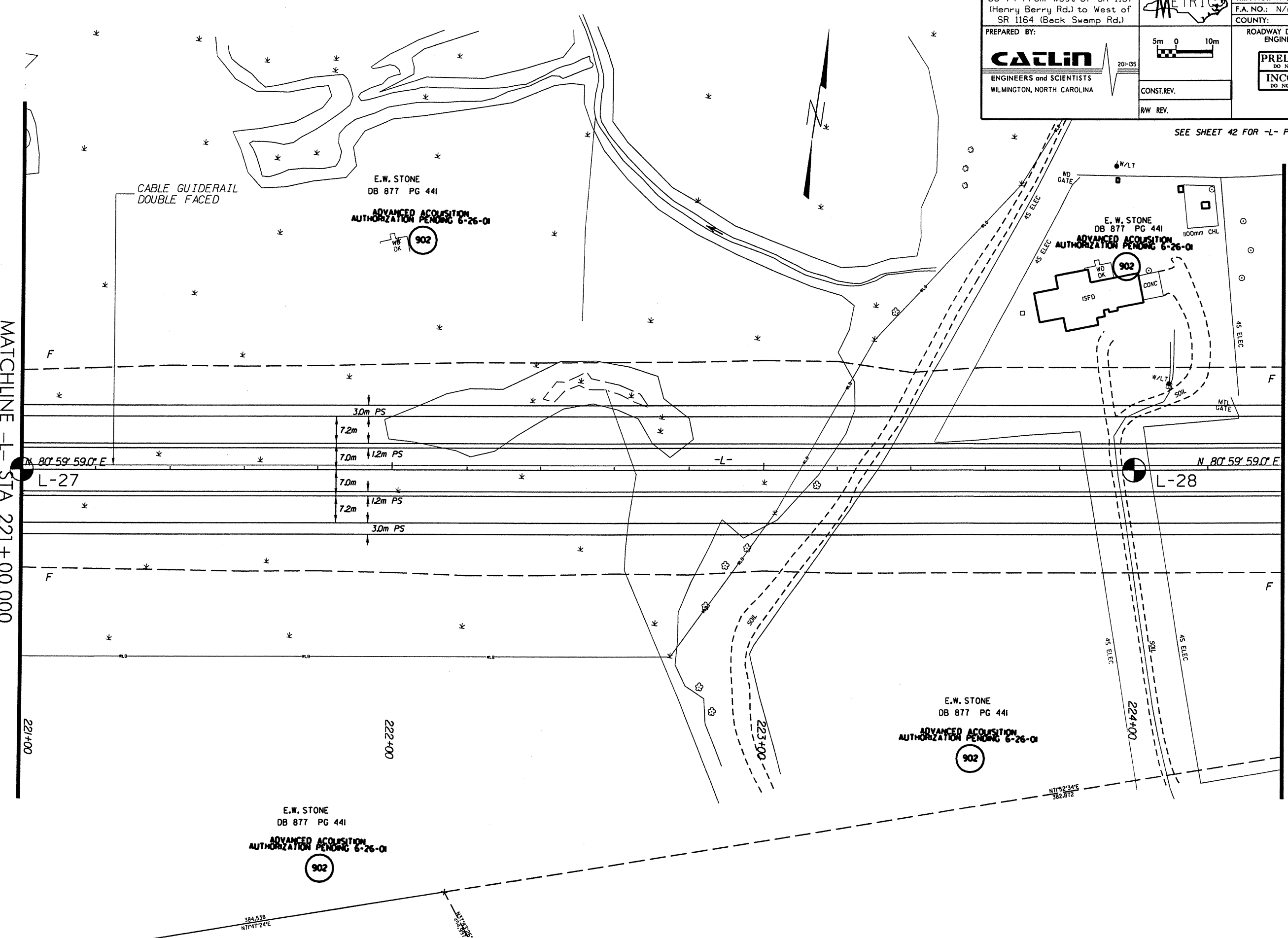
DESCRIPTION: US 74 From West of SR 1157 (Henry Berry Rd.) to West of SR 1164 (Bock Swamp Rd.)	PROJ. NO.: 6.469002T	SHEET NO. 23
	T.I.P. NO.: R-0513BB	TOTAL SHEETS: 65
PREPARED BY: CALIN ENGINEERS and SCIENTISTS WILMINGTON, NORTH CAROLINA	F.A. NO.: N/A	R/W SHEET NO.:
	COUNTY: Robeson	
	ROADWAY DESIGN ENGINEER	HYDRAULICS ENGINEER
	PRELIMINARY PLANS DO NOT USE FOR CONSTRUCTION	
	INCOMPLETE PLANS DO NOT USE FOR R/W ACQUISITION	
	CONST. REV.	
	R/W REV.	



SEE SHEET 42 FOR -L- PROFILE

MATCHLINE -L- STA 221+00.000

MATCHLINE -L- STA 224+40.000



N 80° 59' 59.0" E
L-27

N 80° 59' 59.0" E
L-28

E.W. STONE
DB 877 PG 441
ADVANCED ACQUISITION
AUTHORIZATION PENDING 6-26-01
902

E.W. STONE
DB 877 PG 441
ADVANCED ACQUISITION
AUTHORIZATION PENDING 6-26-01
902

N71°52'34"E
382.872

384.538
N71°47'24"E

N71°52'34"E
382.872