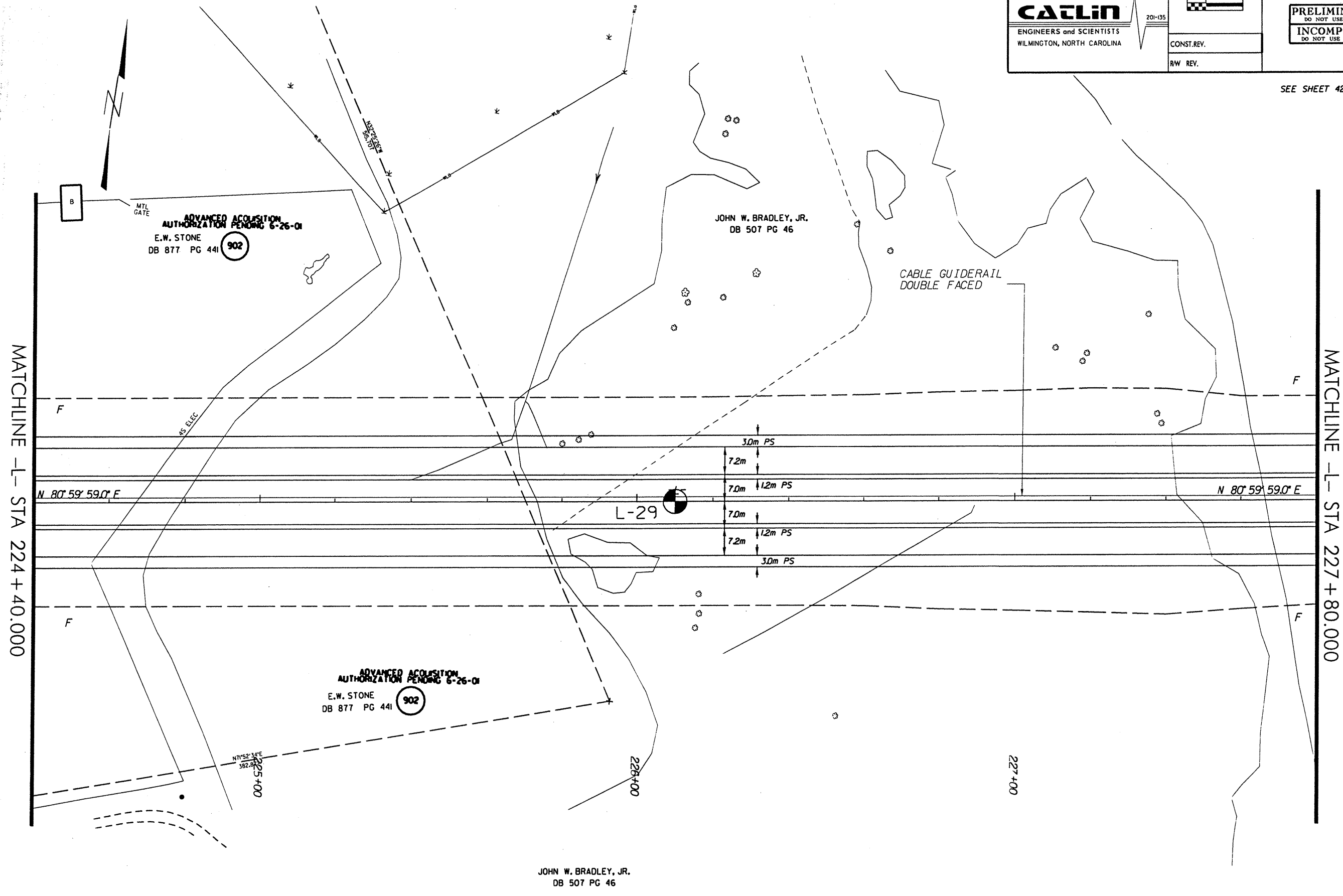


DESCRIPTION: US 74 From West of SR 1157 (Henry Berry Rd.) to West of SR 1164 (Back Swamp Rd.)	PROJ. NO.: 6.469002T	SHEET NO. 24
	T.I.P. NO.: R-0513BB	TOTAL SHEETS: 65
PREPARED BY: CAELIN ENGINEERS and SCIENTISTS WILMINGTON, NORTH CAROLINA	F.A. NO.: N/A	R/W SHEET NO.:
	COUNTY: Robeson	
201-135	ROADWAY DESIGN ENGINEER	HYDRAULICS ENGINEER
	CONST.REV.	
	R/W REV.	



PRELIMINARY PLANS
DO NOT USE FOR CONSTRUCTION
INCOMPLETE PLANS
DO NOT USE FOR R/W ACQUISITION

SEE SHEET 42 FOR -L- PROFILE



MATCHLINE -L- STA 224+40.000

MATCHLINE -L- STA 227+80.000

JOHN W. BRADLEY, JR.
DB 507 PG 46