

-L-  
 PIs Sta 234+42.916 PI Sta 236+18.177  
 $\theta_s = 2^\circ 23' 14.4''$   $\Delta = 10^\circ 10' 46.5''$  (RT)  
 $L_s = 125.000$   $L = 266.501$   
 $LT = 83.341$   $T = 133.602$   
 $ST = 41.674$   $R = 1,500.000$   
 $SE = 0.04$



DESCRIPTION: US 74 From West of SR 1157 (Henry Berry Rd.) to West of SR 1164 (Back Swamp Rd.)		PROJ. NO.: 6.469002T	SHEET NO. 27
		T.I.P. NO.: R-0513BB	TOTAL SHEETS: 65
PREPARED BY: <b>CALIN</b> ENGINEERS and SCIENTISTS WILMINGTON, NORTH CAROLINA		F.A. NO.: N/A	R/W SHEET NO.:
		COUNTY: Robeson	
		ROADWAY DESIGN ENGINEER	HYDRAULICS ENGINEER
CONST. REV.		<b>PRELIMINARY PLANS</b> DO NOT USE FOR CONSTRUCTION	
RW REV.		<b>INCOMPLETE PLANS</b> DO NOT USE FOR R/W ACQUISITION	

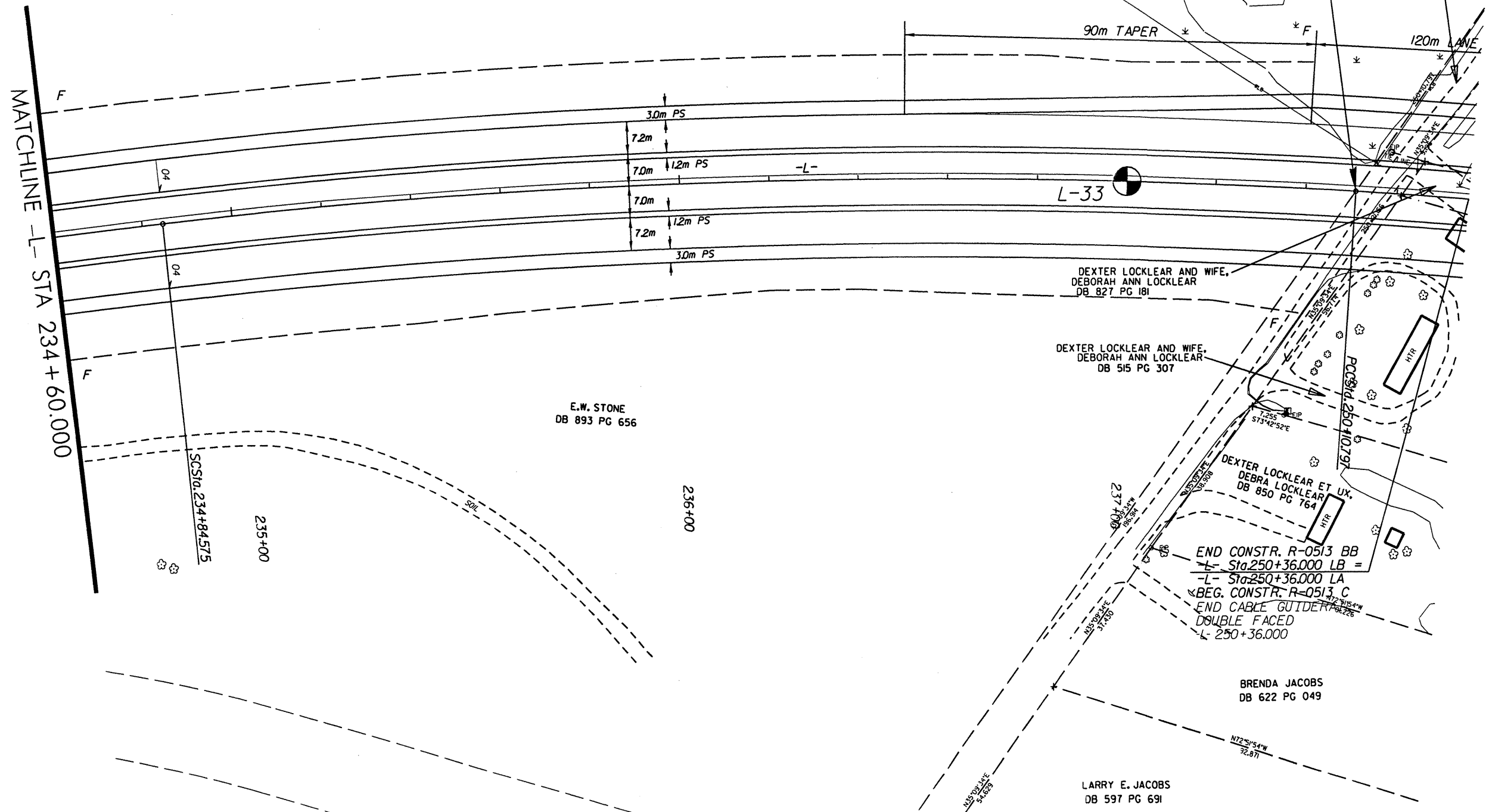
E. W. STONE  
 DB 893 PG 656

END PROJECT R-0513 BB  
 -L- Sta. 237+51.076 LB =  
 -L- Sta. 250+10.797 LA  
 BEG. PROJECT R-0513 C

SEE SHEET 44 FOR -L- PROFILE

JOHN JACOBS AND RON JACOBS  
 DB 943 PG 764

MATCHLINE -L- STA 234+60.000



DEXTER LOCKLEAR AND WIFE,  
 DEBORAH ANN LOCKLEAR  
 DB 827 PG 181

DEXTER LOCKLEAR AND WIFE,  
 DEBORAH ANN LOCKLEAR  
 DB 515 PG 307

E. W. STONE  
 DB 893 PG 656

DEXTER LOCKLEAR ET UX,  
 DEBRA LOCKLEAR  
 DB 850 PG 764

END CONSTR. R-0513 BB  
 -L- Sta. 250+36.000 LB =  
 -L- Sta. 250+36.000 LA  
 BEG. CONSTR. R-0513 C  
 END CABLE GUIDES  
 DOUBLE FACED  
 -L- 250+36.000

BRENDA JACOBS  
 DB 622 PG 049

LARRY E. JACOBS  
 DB 597 PG 691