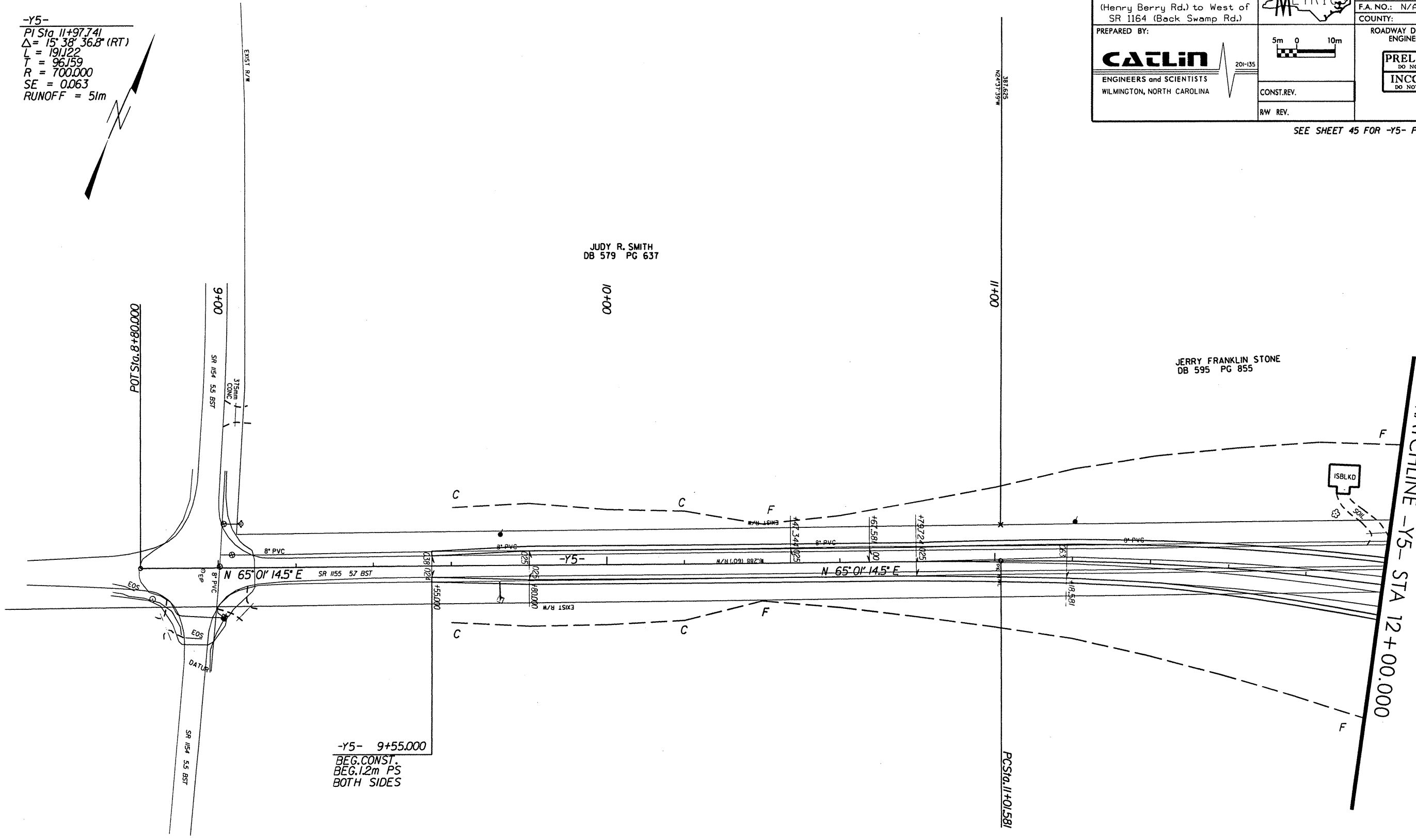


DESCRIPTION: US 74 From West of SR 1157 (Henry Berry Rd.) to West of SR 1164 (Back Swamp Rd.)	PROJ. NO.: 6.469002T	SHEET NO. 28
	T.I.P. NO.: R-05138B	TOTAL SHEETS: 65
PREPARED BY: CATLIN ENGINEERS and SCIENTISTS WILMINGTON, NORTH CAROLINA	F.A. NO.: N/A	R/W SHEET NO.:
	COUNTY: Robeson	
	ROADWAY DESIGN ENGINEER	HYDRAULICS ENGINEER
	PRELIMINARY PLANS DO NOT USE FOR CONSTRUCTION	
	INCOMPLETE PLANS DO NOT USE FOR R/W ACQUISITION	
	CONST. REV.	
	R/W REV.	

SEE SHEET 45 FOR -Y5- PROFILE

-Y5-
PI Sta. 11+97.741
 $\Delta = 15^{\circ} 38' 36.8" (RT)$
L = 191.22
T = 96.159
R = 700.000
SE = 0.063
RUNOFF = 51m



JUDY R. SMITH
DB 579 PG 637

JERRY FRANKLIN STONE
DB 595 PG 855

-Y5- 9+55.000
BEG. CONST.
BEG. 1.2m PS
BOTH SIDES

E.W. STONE
DB 893 PG 656

MATCHLINE -Y5- STA 12+00.000