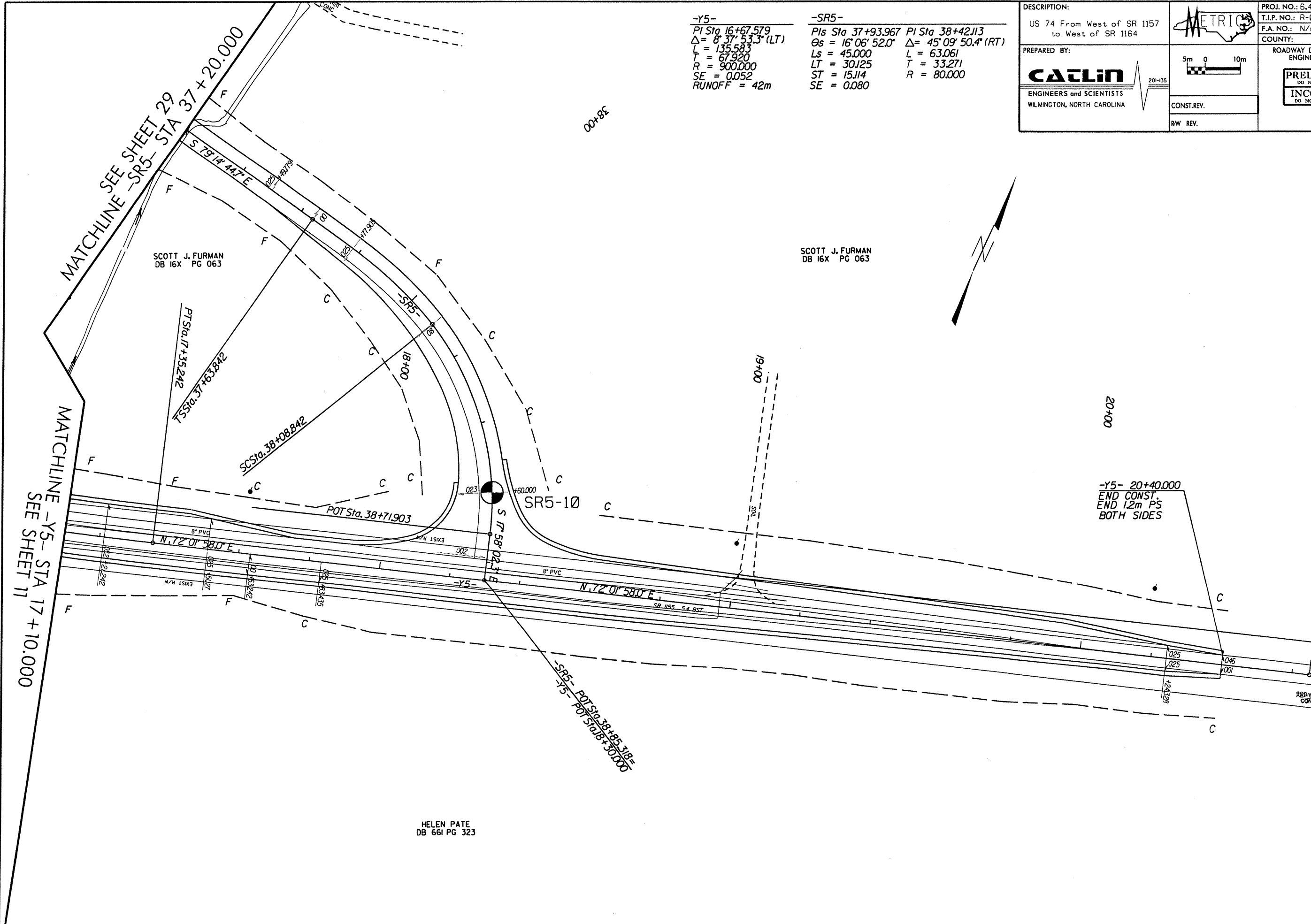


-Y5-
 PI Sta 16+67.579
 $\Delta = 8^\circ 37' 53.3" (LT)$
 $L = 135.583$
 $T = 67.920$
 $R = 900.000$
 $SE = 0.052$
 RUNOFF = 42m

-SR5-
 PIs Sta 37+93.967 PI Sta 38+42.113
 $\Theta_s = 16^\circ 06' 52.0"$ $\Delta = 45^\circ 09' 50.4" (RT)$
 $L_s = 45.000$ $L = 63.061$
 $LT = 30.125$ $T = 33.271$
 $ST = 15.114$ $R = 80.000$
 $SE = 0.080$

DESCRIPTION: US 74 From West of SR 1157 to West of SR 1164	METRIC 5m 0 10m	PROJ. NO.: 6.469002T	SHEET NO. 30
		T.I.P. NO.: R-0513BB	TOTAL SHEETS: 65
PREPARED BY: CATLIN ENGINEERS and SCIENTISTS WILMINGTON, NORTH CAROLINA	201-135	F.A. NO.: N/A	R/W SHEET NO.:
		COUNTY: Robeson	
		ROADWAY DESIGN ENGINEER	HYDRAULICS ENGINEER
		PRELIMINARY PLANS DO NOT USE FOR CONSTRUCTION INCOMPLETE PLANS DO NOT USE FOR R/W ACQUISITION	
		CONST. REV.	
		R/W REV.	



SCOTT J. FURMAN
DB 16X PG 063

SCOTT J. FURMAN
DB 16X PG 063

HELEN PATE
DB 661 PG 323

-Y5- 20+40.000
 END CONST.
 END 1.2m PS
 BOTH SIDES

MATCHLINE -Y5- STA 17+10.000
 SEE SHEET 11

MATCHLINE -SR5- STA 37+20.000
 SEE SHEET 29