
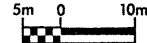
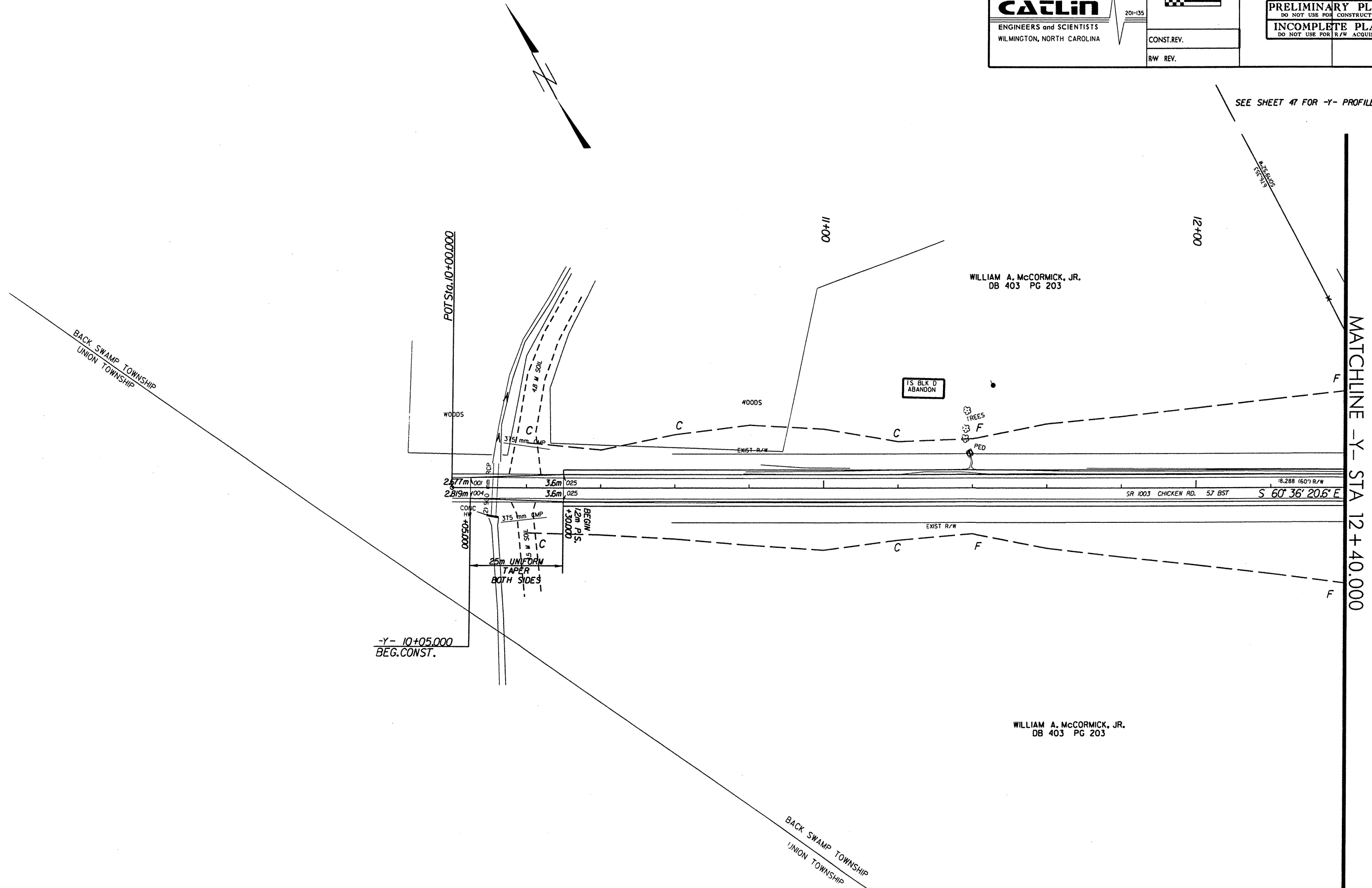


DESCRIPTION: US 74 From West of SR 1157 to West of SR 1164		PROJ. NO.: 6.469002T	SHEET NO. 31
		T.I.P. NO.: R-0513BB	TOTAL SHEETS: 65
PREPARED BY: <b>CAULIN</b> ENGINEERS and SCIENTISTS WILMINGTON, NORTH CAROLINA	 20-135	F.A. NO.: N/A	R/W SHEET NO.:
		COUNTY: Robeson	
		ROADWAY DESIGN ENGINEER	HYDRAULICS ENGINEER
		<b>PRELIMINARY PLANS</b> DO NOT USE FOR CONSTRUCTION	
		<b>INCOMPLETE PLANS</b> DO NOT USE FOR R/W ACQUISITION	
		CONST. REV.	
		R/W REV.	

SEE SHEET 47 FOR -Y- PROFILE



BACK SWAMP TOWNSHIP  
UNION TOWNSHIP

MATCHLINE -Y- STA 12+40.000

-Y- 10+05.000  
BEG. CONST.

WILLIAM A. McCORMICK, JR.  
DB 403 PG 203

BACK SWAMP TOWNSHIP  
UNION TOWNSHIP