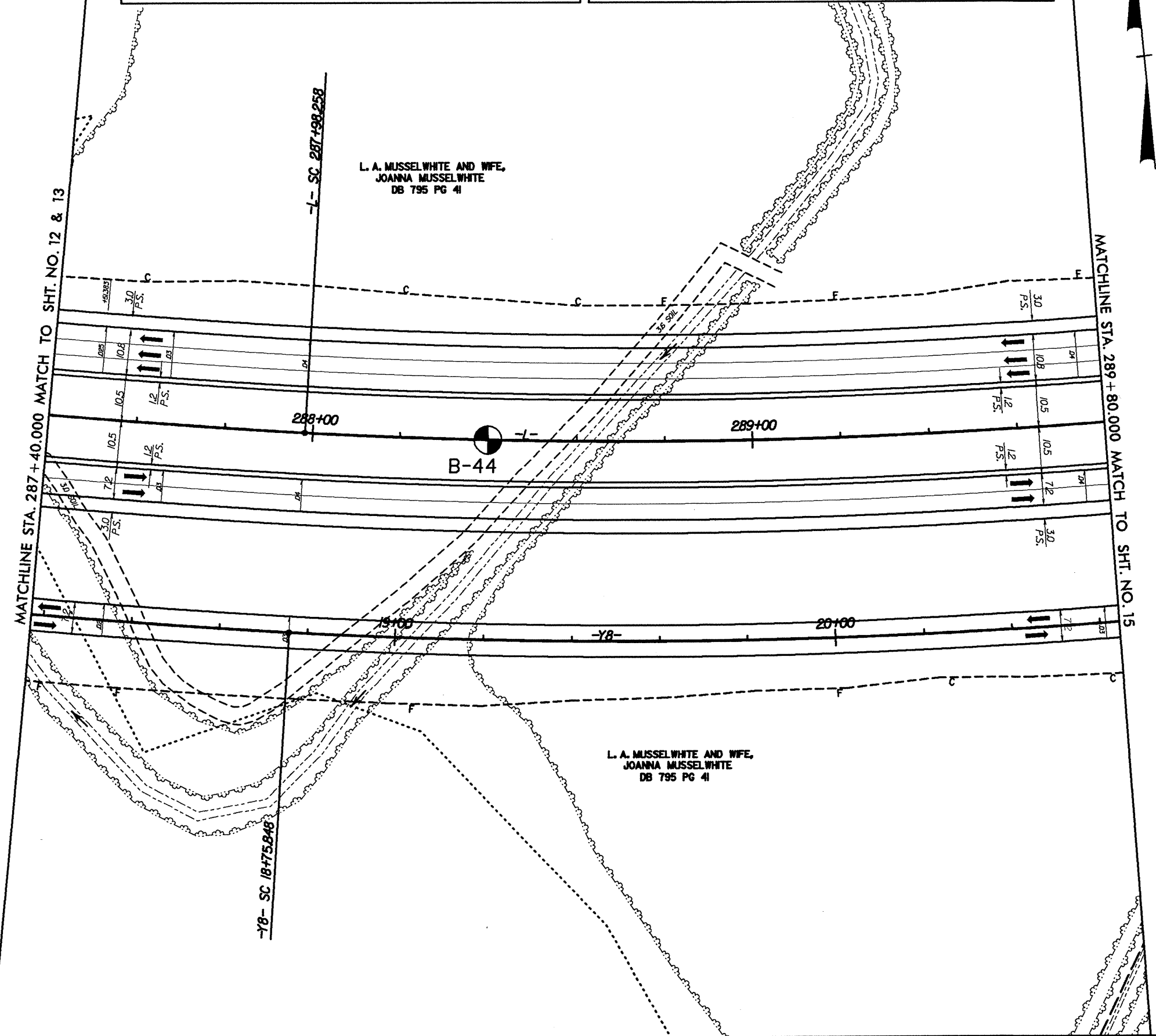


-L-			-YB-		
Pls Sta 287+56.600	PI Sta 290+71.002	Pls Sta 293+78.672	Pls Sta 18+33.523	PI Sta 21+11.541	Pls Sta 23+63.120
$\theta_s = 2^\circ 33' 28.3"$	$\Delta = 22^\circ 02' 53.6" (LT)$	$\theta_s = 2^\circ 33' 28.3"$	$\theta_s = 2^\circ 31' 04.2"$	$\Delta = 18^\circ 31' 40.1" (LT)$	$\theta_s = 1^\circ 17' 22.3"$
$L_s = 125.000$	$L = 538.740$	$L_s = 125.000$	$L_s = 127.000$	$L = 467.271$	$L_s = 60.000$
$LT = 83.342$	$T = 272.744$	$LT = 83.342$	$LT = 84.675$	$T = 235.693$	$LT = 40.001$
$ST = 41.675$	$R = 1,400.000$	$ST = 41.675$	$ST = 42.341$	$R = 1,445.000$	$ST = 20.001$
	$SE = 4\%$			$SE = 3\%$	



**METRIC**

Scale: 1" = 10'

CONST. REV. \_\_\_\_\_

R/W REV. \_\_\_\_\_

PROJECT REFERENCE NO. <b>R 513C</b>	SHEET NO. <b>14</b>
ROADWAY DESIGN ENGINEER	HYDRAULICS ENGINEER
<b>PRELIMINARY PLANS</b> DO NOT USE FOR CONSTRUCTION <b>INCOMPLETE PLANS</b> DO NOT USE FOR R/W ACQUISITION	
<b>TGS ENGINEERS</b> ADAPTED FROM: <b>TGS ENGINEERS</b> SUITE 141 975 WALNUT STREET CARY, NC 27511	
PREPARED BY:   <b>CATLIN</b> ENGINEERS and SCIENTISTS WILMINGTON, NORTH CAROLINA	

ALL INFORMATION CONTAINED HEREIN IS UNCLASSIFIED  
 DATE 08/24/2011 BY 60324 UCBAW/STP/STP