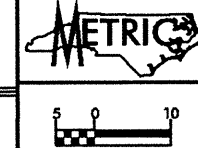


PREPARED BY:  
**CAELIN**  
 ENGINEERS and SCIENTISTS  
 WILMINGTON, NORTH CAROLINA



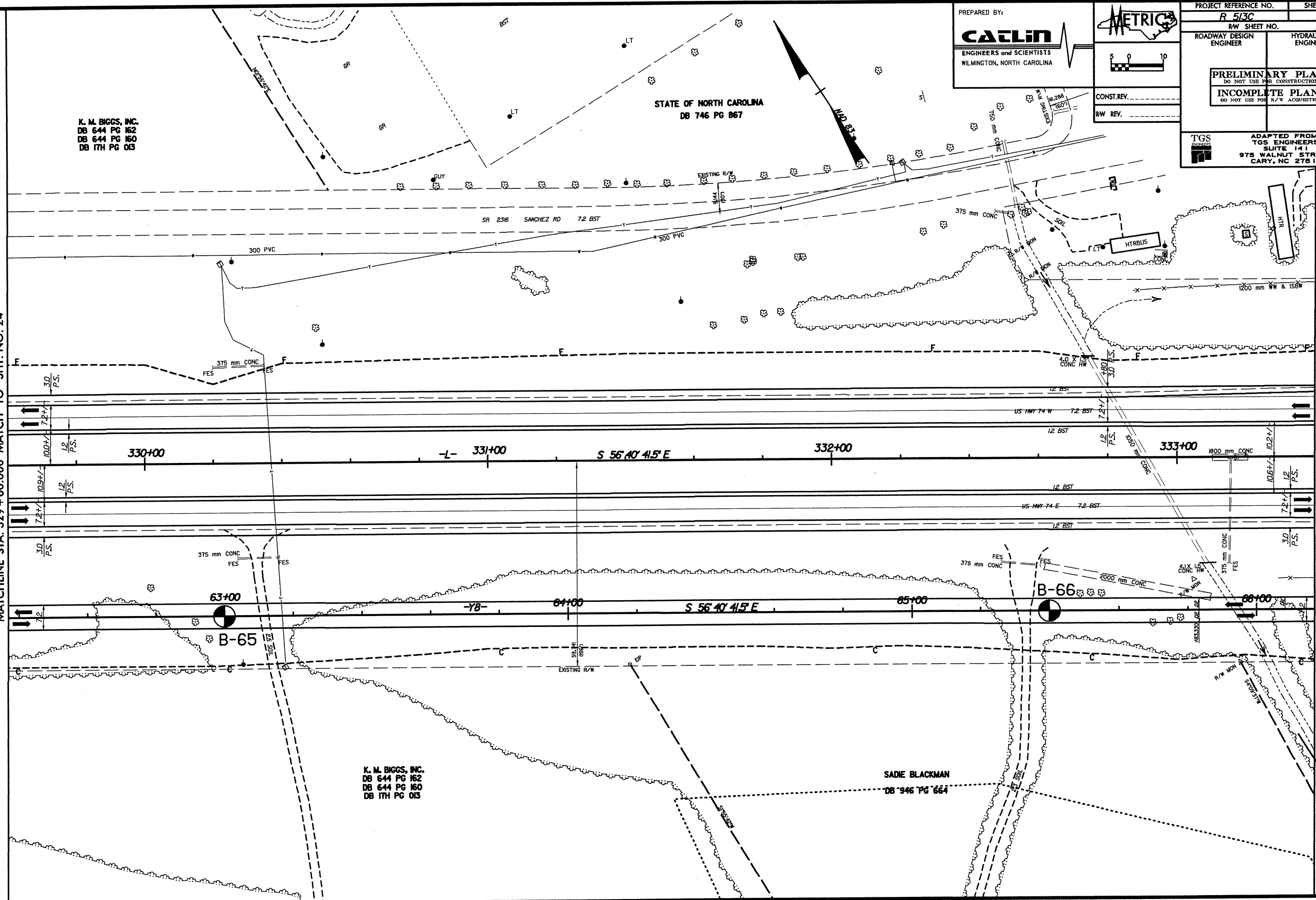
PROJECT REFERENCE NO. <b>R 513C</b>	SHEET NO. <b>25</b>
RW SHEET NO.	
ROADWAY DESIGN ENGINEER	HYDRAULICS ENGINEER
<b>PRELIMINARY PLANS</b> <small>DO NOT USE FOR CONSTRUCTION</small>	
<b>INCOMPLETE PLANS</b> <small>DO NOT USE FOR R/W ACQUISITION</small>	
<b>TGS</b> <small>ADAPTED FROM:        TGS ENGINEERS        SUITE 141        975 WALNUT STREET        CARY, NC 27511</small>	

K. M. BIGGS, INC.  
 DB 644 PG 162  
 DB 644 PG 160  
 DB 17H PG 013

STATE OF NORTH CAROLINA  
 DB 746 PG 867

MATCHLINE STA. 329 + 60.000 MATCH TO SHT. NO. 24

MATCHLINE STA. 333 + 40.000 MATCH TO SHT. NO. 26



K. M. BIGGS, INC.  
 DB 644 PG 162  
 DB 644 PG 160  
 DB 17H PG 013

SADIE BLACKMAN  
 DB 946 PG 664

CLIFFORD E. BULLARD  
 DB 13C PG 168