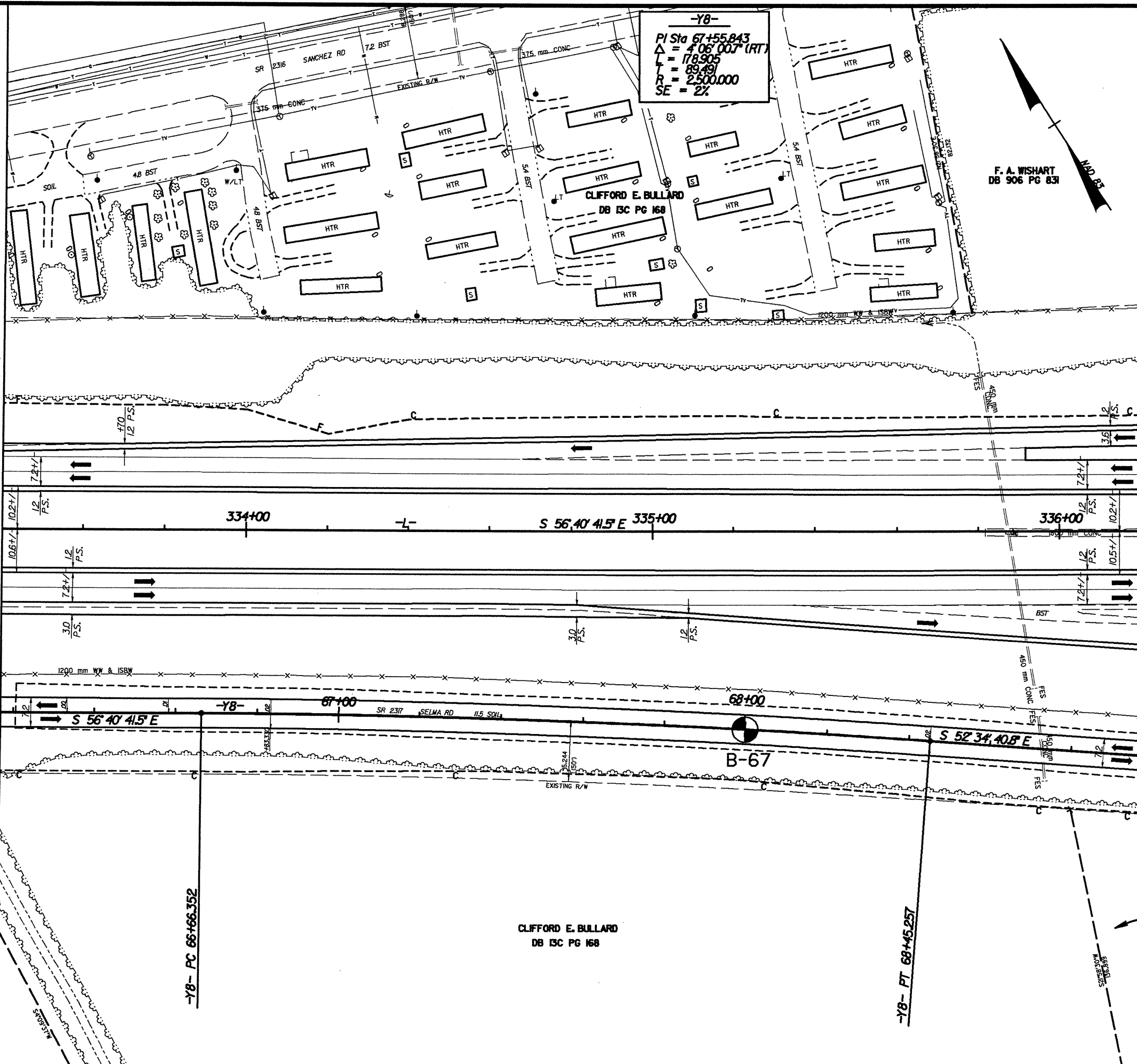


MATCHLINE STA. 333 + 40.000 MATCH TO SHT. NO. 25

MATCHLINE STA. 336 + 20.000 MATCH TO SHT. NO. 27



-Y8-
 PI Sta 67+55.843
 $\Delta = 4.06' 00.7" (RT)$
 $L = 178.905$
 $T = 89.453$
 $R = 2,500.000$
 $SE = 2\%$

F. A. WISHART
 DB 906 PG 831

CLIFFORD E. BULLARD
 DB 13C PG 168

F. A. WISHART
 DB 906 PG 831



PROJECT REFERENCE NO. R 513C		SHEET NO. 26	
ROADWAY DESIGN ENGINEER		HYDRAULICS ENGINEER	
PRELIMINARY PLANS DO NOT USE FOR CONSTRUCTION INCOMPLETE PLANS DO NOT USE FOR E/W ACQUISITION			
CONST. REV. _____		RW REV. _____	
TGS ENGINEERS		ADAPTED FROM: TGS ENGINEERS SUITE 141 975 WALNUT STREET CARY, NC 27511	
PREPARED BY: CATLIN ENGINEERS and SCIENTISTS WILMINGTON, NORTH CAROLINA			

 SYSTEMS
