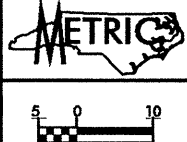


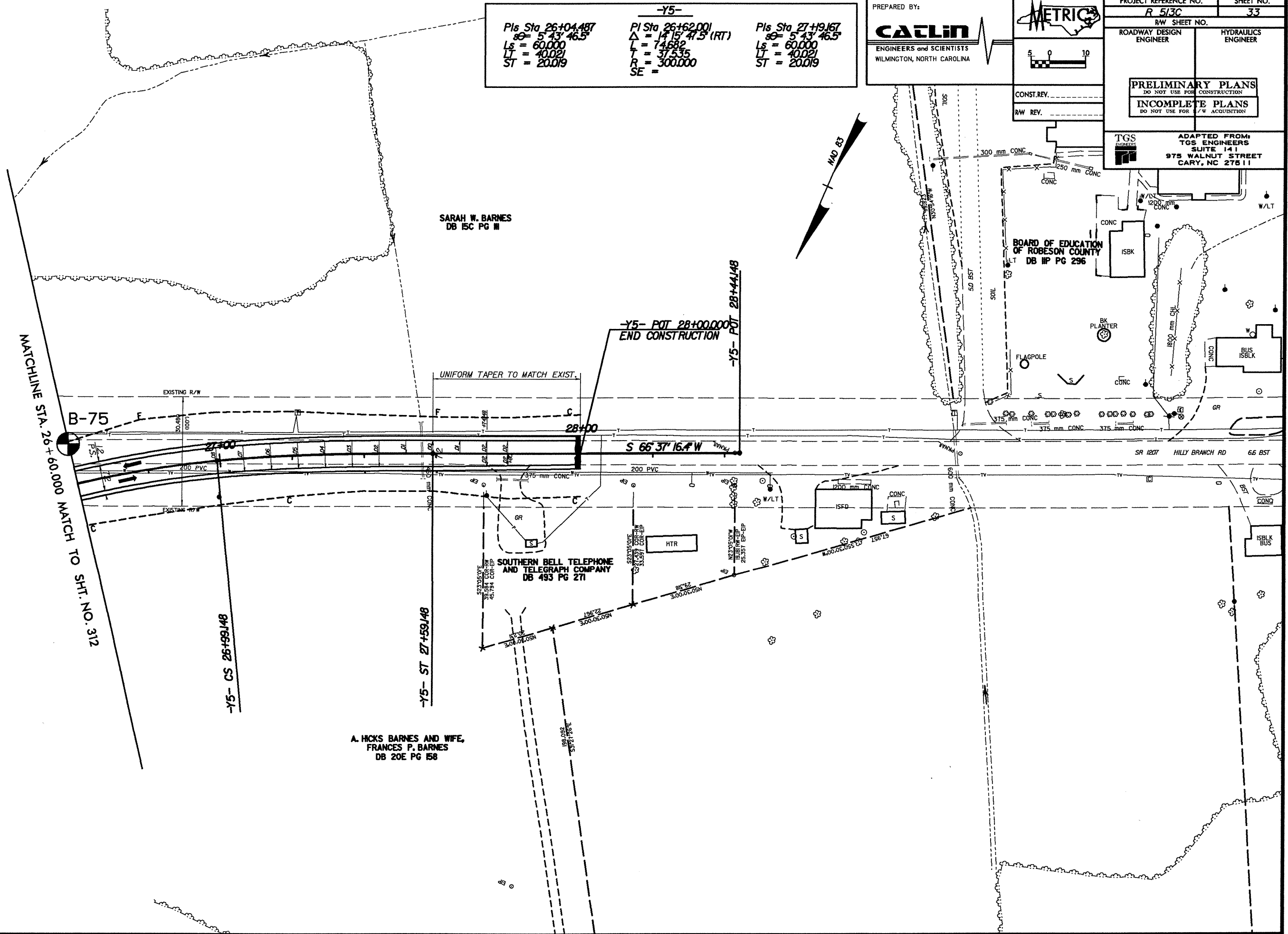
-Y5-

Pls Sta 26+04.487 $\theta = 5^{\circ} 43' 46.5''$ $L_s = 60.000$ $LT = 40.021$ $ST = 20.019$	PI Sta 26+62.001 $\Delta = 14^{\circ} 15' 47.5''$ (RT) $L = 74.682$ $T = 37.535$ $R = 300.000$ $SE =$	Pls Sta 27+19.167 $\theta = 5^{\circ} 43' 46.5''$ $L_s = 60.000$ $LT = 40.021$ $ST = 20.019$
--	--	--

PREPARED BY:  
**CAELIN**  
 ENGINEERS and SCIENTISTS  
 WILMINGTON, NORTH CAROLINA



PROJECT REFERENCE NO. <b>R 513C</b>	SHEET NO. <b>33</b>
R/W SHEET NO.	
ROADWAY DESIGN ENGINEER	HYDRAULICS ENGINEER
<b>PRELIMINARY PLANS</b> DO NOT USE FOR CONSTRUCTION	
<b>INCOMPLETE PLANS</b> DO NOT USE FOR ACQUISITION	
<b>TGS ENGINEERS</b> ADAPTED FROM: <b>TGS ENGINEERS</b> SUITE 141 975 WALNUT STREET CARY, NC 27511	



MATCHLINE STA. 26+60.000 MATCH TO SHI. NO. 312

SARAH W. BARNES  
 DB 15C PG III

BOARD OF EDUCATION  
 OF ROBESON COUNTY  
 DB 1P PG 296

SOUTHERN BELL TELEPHONE  
 AND TELEGRAPH COMPANY  
 DB 493 PG 271

A. HICKS BARNES AND WIFE,  
 FRANCES P. BARNES  
 DB 20E PG 158

\*\*\*\*\*  
 TIME \*\*\*\*\*  
 DATE \*\*\*\*\*  
 DRAWN BY \*\*\*\*\*  
 CHECKED BY \*\*\*\*\*  
 DATE \*\*\*\*\*  
 PROJECT NO. \*\*\*\*\*  
 SHEET NO. \*\*\*\*\*  
 \*\*\*\*\*