

-Y2-
 PI Sta 38+32.987
 $\Delta = 21^{\circ} 01' 45.0" (RT)$
 $L = 1207.155$
 $T = 610.446$
 $R = 3289.000$
 $SE = 2.5\%$

COAD
 PIs Sta 24+99.725
 $\theta_s = 0^{\circ} 55' 55.5"$
 $L_s = 100.540$
 $LT = 67.028$
 $ST = 33.514$

COAD
 PI Sta 28+81.515
 $\Delta = 12^{\circ} 51' 38.8" (RT)$
 $L = 693.628$
 $T = 348.277$
 $R = 3,090.169$
 $SE = 2.5\%$

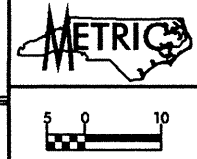
COAD
 PI Sta 36+39.289
 $\Delta = 14^{\circ} 09' 16.0" (RT)$
 $L = 820.648$
 $T = 412.424$
 $R = 3,321.900$
 $SE = 2.5\%$

COAD
 PIs Sta 40+80.614
 $\theta_s = 1^{\circ} 29' 58.7"$
 $L_s = 60.000$
 $LT = 33.101$
 $ST = 26.902$
 $R1 = 3,321.900$
 $R2 = 1750.000$

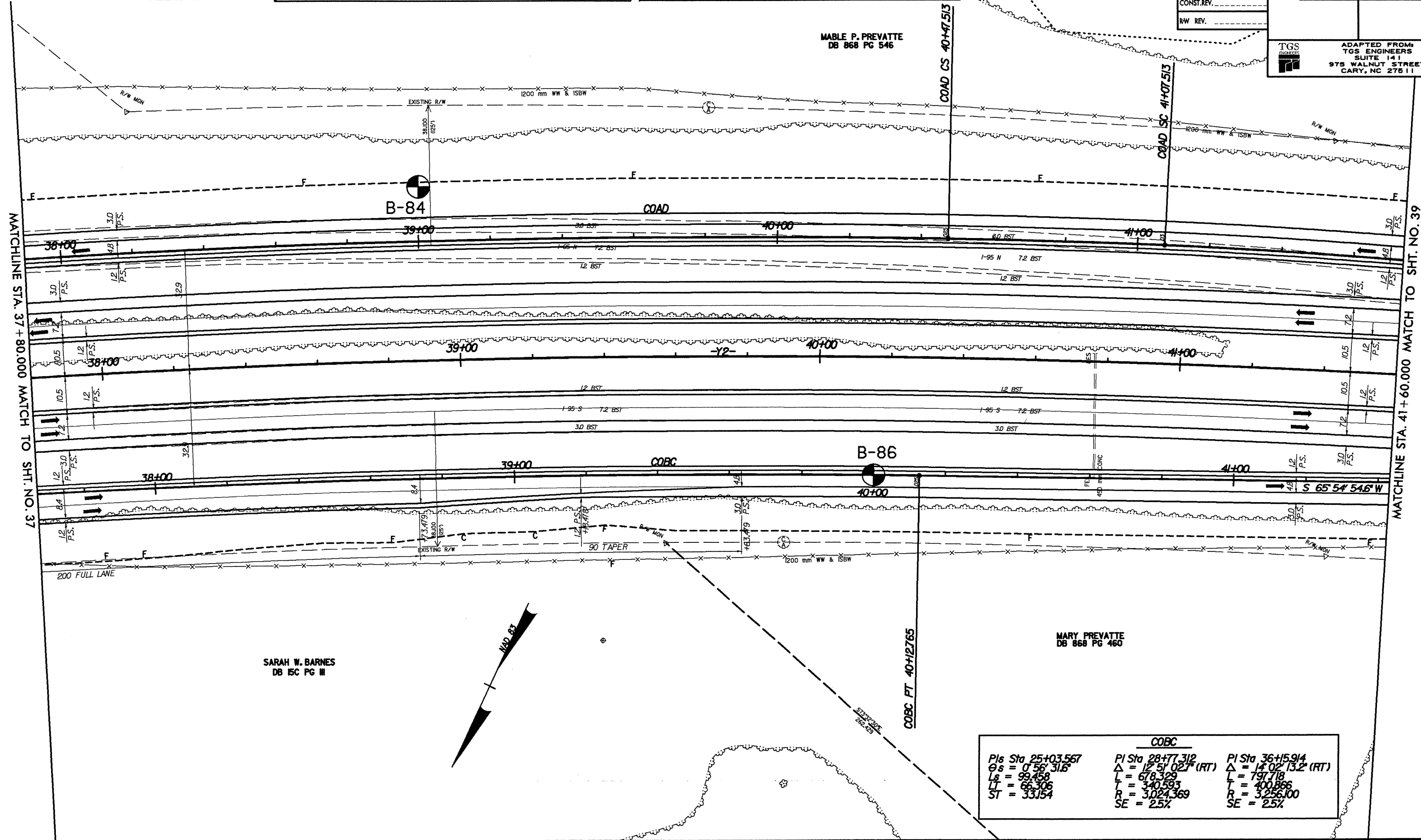
COAD
 PI Sta 42+09.841
 $\Delta = 6^{\circ} 41' 34.3" (RT)$
 $L = 204.421$
 $T = 102.327$
 $R = 1750.000$
 $SE = 2.5\%$

COAD
 PIs Sta 43+31.935
 $\theta_s = 0^{\circ} 58' 56.0"$
 $L_s = 60.000$
 $LT = 40.001$
 $ST = 20.001$

PREPARED BY:
CAELIN
 ENGINEERS and SCIENTISTS
 WILMINGTON, NORTH CAROLINA



PROJECT REFERENCE NO. R 513C	SHEET NO. 38
R/W SHEET NO.	
ROADWAY DESIGN ENGINEER	HYDRAULICS ENGINEER
PRELIMINARY PLANS DO NOT USE FOR CONSTRUCTION	
ADAPTED FROM: TGS ENGINEERS SUITE 141 975 WALNUT STREET CARY, NC 27511	



MABLE P. PREVATTE
 DB 868 PG 546

MARY PREVATTE
 DB 868 PG 460

SARAH W. BARNES
 DB 15C PG III

COBC
 PIs Sta 25+03.567
 $\theta_s = 0^{\circ} 56' 31.6"$
 $L_s = 99.458$
 $LT = 66.306$
 $ST = 33.154$

COBC
 PI Sta 28+77.312
 $\Delta = 12^{\circ} 51' 02.7" (RT)$
 $L = 678.329$
 $T = 340.593$
 $R = 3,024.369$
 $SE = 2.5\%$

COBC
 PI Sta 36+15.914
 $\Delta = 14^{\circ} 02' 13.2" (RT)$
 $L = 797.718$
 $T = 400.866$
 $R = 3,256.100$
 $SE = 2.5\%$

MATCHLINE STA. 37 + 80.000 MATCH TO SHT. NO. 37

MATCHLINE STA. 41 + 60.000 MATCH TO SHT. NO. 39