

### SOIL TEST RESULTS

SAMPLE NO.	OFFSET	STATION	DEPTH INTERVAL	AASHTO CLASS.	L.L.	P.L.	% BY WEIGHT				% PASSING SIEVES			% MOISTURE	% ORGANIC
							C. SAND	F. SAND	SILT	CLAY	10	40	200		
SS 74	0	268+20.0	0.80-1.25	A-7-6(7)	47	29	4.5	54.0	6.8	34.7	98.7	97.7	43.3	22	NS
SS 75	0	268+20.0	1.50-1.95	A-7-6(5)	42	23	1.9	59.4	7.9	30.8	100.0	99.6	41.3	22	NS
SS 76	0	268+20.0	4.10-4.55	A-3(0)	25	NP	15.5	84.2	0.1	0.2	100.0	93.8	1.3	32	NS

DESCRIPTION:

US 74 FROM SR 1003 TO I-95

PREPARED BY:

**CALIN**  
ENGINEERS and SCIENTISTS  
WILMINGTON, NORTH CAROLINA

DATE: 06 /00



CONST. REV. \_\_\_\_\_

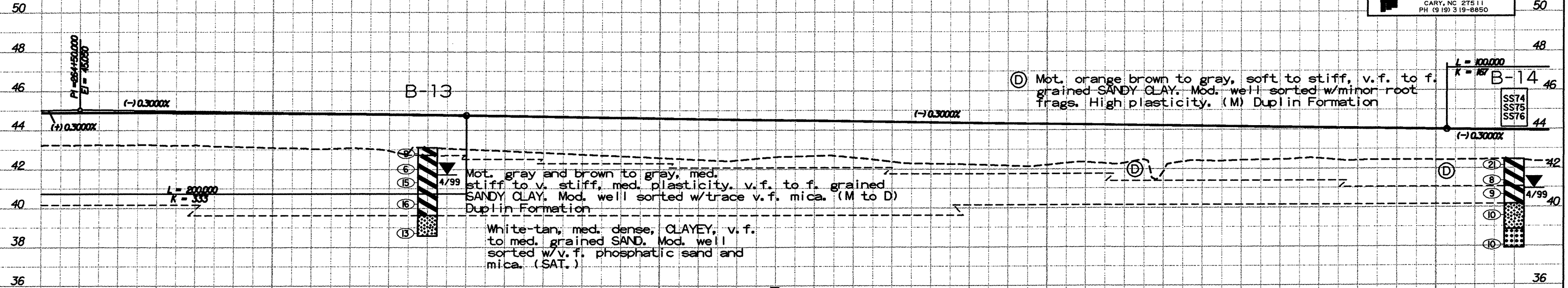
R/W REV. \_\_\_\_\_

PROJECT NO.: 6.469002T SHEET NO. 53

TIP NO.: R-0513C  
COUNTY: ROBESON  
ROADWAY DESIGN ENGINEER  
HYDRAULICS ENGINEER

**PRELIMINARY PLANS**  
DO NOT USE FOR CONSTRUCTION  
**INCOMPLETE PLANS**  
DO NOT USE FOR R/W ACQUISITION

TGS  
ADAPTED FROM:  
TGS ENGINEERS  
975 WALNUT STREET  
CARY, NC 27511  
PH (919) 319-8850



-L-

264+40                      265+00                      266+00                      267+00                      268+00                      268+20

